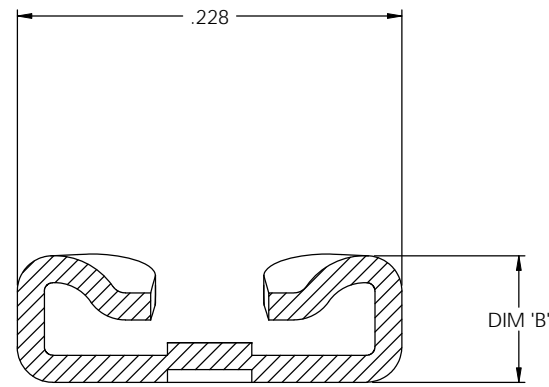
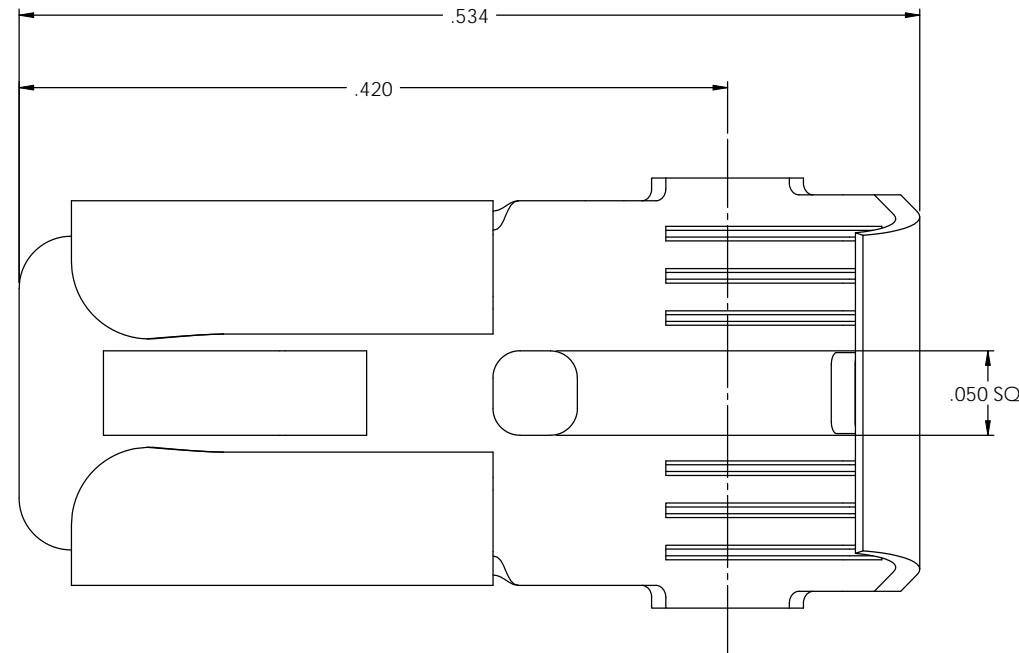
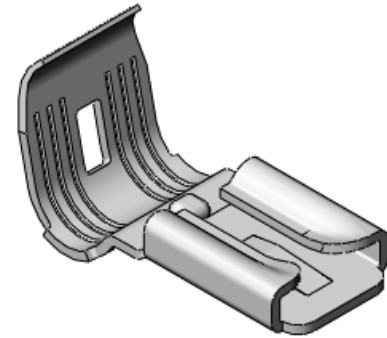


NOTES:

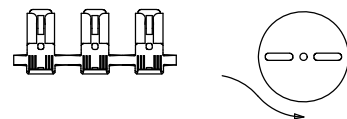
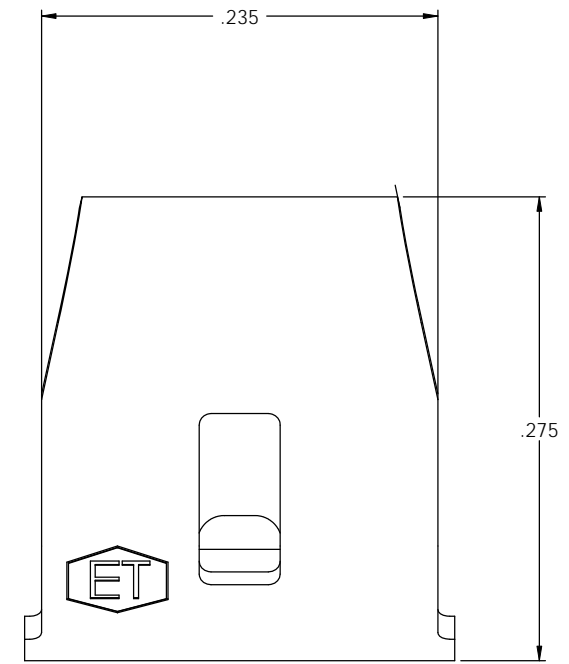
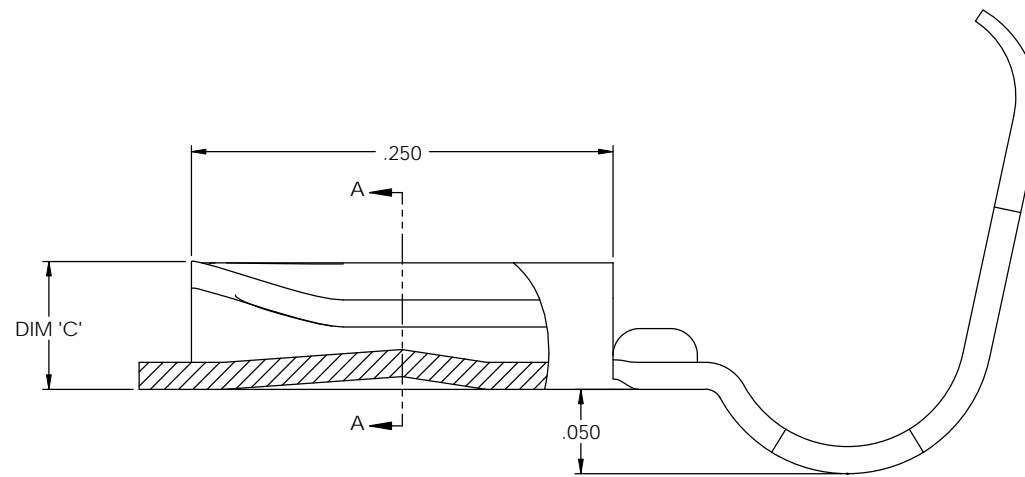
- MATERIAL: .016 THICK, BRASS, #4 TEMPER (FULL HARD), PER ETCO METAL CODE 00131
- MATERIAL: .016 THICK, PRE-TINNED BRASS, #4 TEMPER (FULL HARD), PER ETCO METAL CODE 01195.
- PARTS MAY BE COATED WITH A LIGHT FILM OF LUBRICATION USED IN THE MANUFACTURING PROCESS.
- INSERTION/WITHDRAWAL FORCES ARE INDICATED ON THE QUALITY INSPECTION PLAN.
- WIRE RANGE: 14-16 AWG.

P/C	DESCRIPTION	ACCEPTED MALE	DIM "B"	DIM "C"	MAT'L
07778	DF112-HB	.020 X .187	.075	.075 MAX	NOTE 1
07779	DF112-THB	.020 X .187	.075	.075 MAX	NOTE 2
07848	DF113-THB	.032 X .187	.085	.110 MAX	NOTE 2

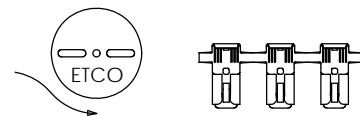
Rev.	Description of Change/ SCN#	Date
1	SCN# 140330 SCJ ORG.ENG.DWG.DATE: 8-31-93	2-14-08
2	PCA-000064 JMR	8-25-08



SECTION A-A
SCALE 14 : 1



DIRECTION EXITING TOOL,
EARS UP, TO THE FRONT



DIRECTION TOWARD APPLICATOR,
EARS UP, TO THE BACK

THIS PRINT IS THE PROPERTY OF ETCO INCORPORATED. NO PART OF THIS DESIGN MAY BE USED IN ANY WAY WITHOUT WRITTEN CONSENT FROM ETCO INCORPORATED.

UNCONTROLLED COPY

<p>THIRD ANGLE PROJECTION</p>	TOOL NO.	Title: FEMALE FLAG .187 DISCONNECT		
	0605	DO NOT SCALE DWG.	Drawn By: S. JOHNSON	Date: 2-14-08
<p>TOLERANCES UNLESS OTHERWISE SPECIFIED</p> <p>INCHES: XX - ±.030 XXX - ±.015</p> <p>ANGLES: ±5°</p>		ETCO Incorporated Engineered Products 25 Bellows Street Warwick, RI 02888 Phone: (401) 467-2400 Fax: (401) 467-9230 www.ETCO.com	Chk'd/App'd By:	Scale: 14X Size: C
	Dwg. No.: DF112, DF113 cust			