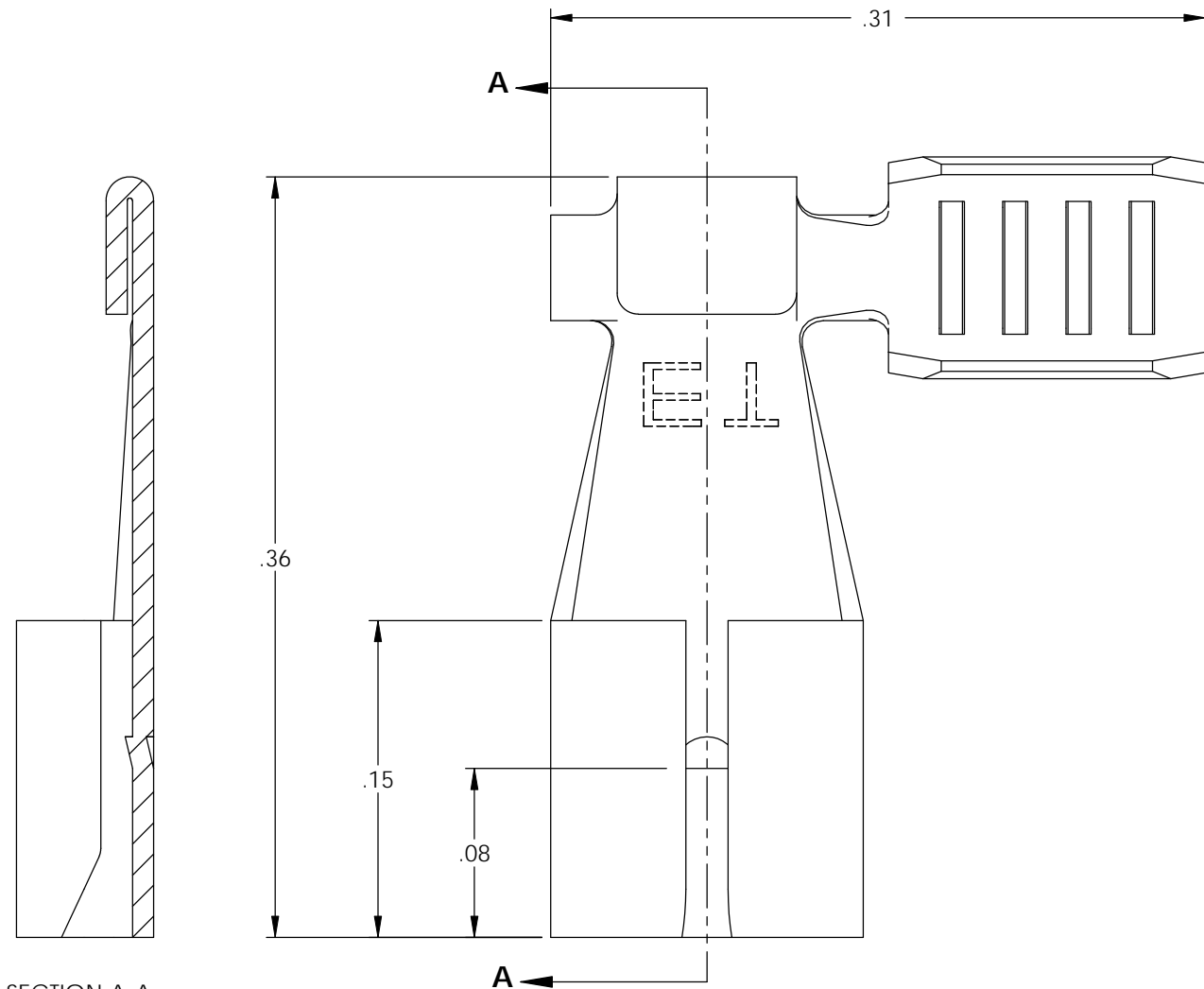


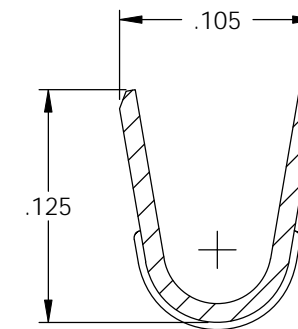
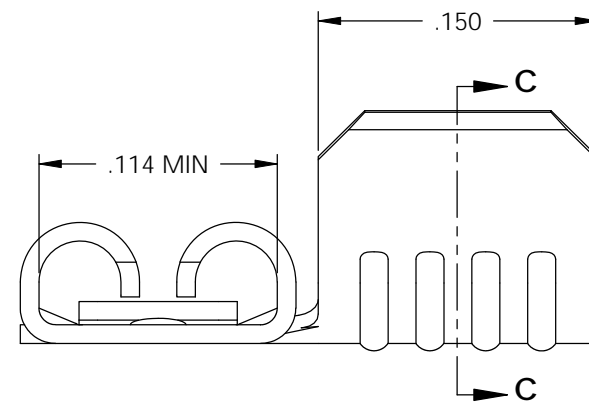
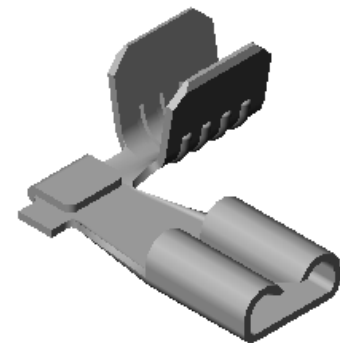
- NOTE:
- MAT'L: .010 THK, BRASS, #4 TEMPER (FULL HARD), PER ETCO METAL CODE NO. 00047.
 - MAT'L: .010 THK, PRE-TINNED BRASS, #4 TEMPER (FULL HARD), PER ETCO METAL CODE NO. 01054.
 - PARTS MAY BE COATED WITH A LIGHT FILM OF LUBRICATION USED IN THE MANUFACTURING PROCESS.
 - INSERTION/WITHDRAWAL FORCES ARE INDICATED ON THE QUALITY INSPECTION RECORD.
 - WIRE RANGE: 18-16 AWG.

Rev.	Description of Change/ SCN#	Date
1	REDRAWN ON SOLIDWORKS NO CHANGES SCJ ORG.ENG.DWG.DATE: 4-5-93	2-14-06

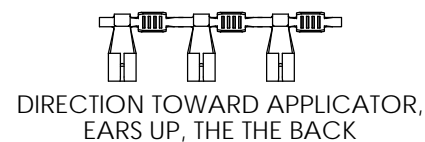
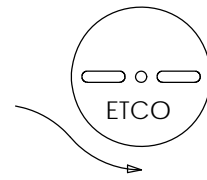
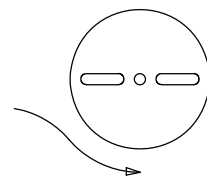
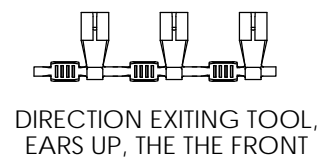


SECTION A-A
SCALE 10 : 1

P/C	DESCRIPTION	ACCEPTED MALE	MAT'L
07754	DF70-HB	.032 X .110	NOTE 1
07755	DF70-THB	.032 X .110	NOTE 2
07756	DF72-HB	.020 X .110	NOTE 1
07757	DF72-THB	.020 X .110	NOTE 2
07758	DF74-HB	.016 X .110	NOTE 1
07759	DF74-THB	.016 X .110	NOTE 2



SECTION C-C
SCALE 10 : 1



UNCONTROLLED COPY

<p>THIRD ANGLE PROJECTION TOLERANCES UNLESS OTHERWISE SPECIFIED INCHES: .XX - ±.030 .XXX - ±.015 ANGLES: ±5°</p>	<p>TOOL NO. 0602</p>	<p>Title: .110 FEMALE FLAG DISCONNECT</p>		
		<p>DO NOT SCALE DWG.</p>	<p>Drawn By: S.JOHNSON</p>	<p>Date: 2-14-06</p>
<p>ETCO Incorporated Engineered Products 25 Bellows Street Warwick, RI 02888 Phone: (401) 467-2400 Fax: (401) 467-9230 www.ETCO.com</p>		<p>Chk'd/App'd By:</p>	<p>Scale: 10X</p>	<p>Size B</p>
		<p>Dwg. No.: DF70, DF72, DF74 cust</p>		