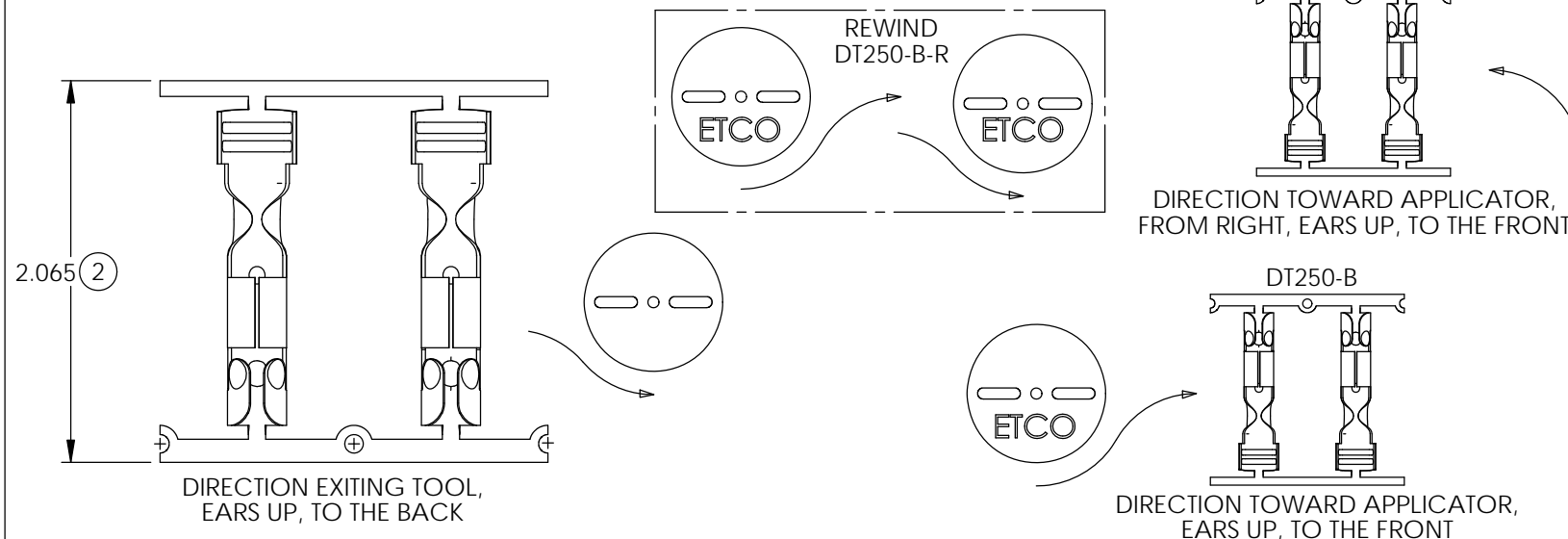
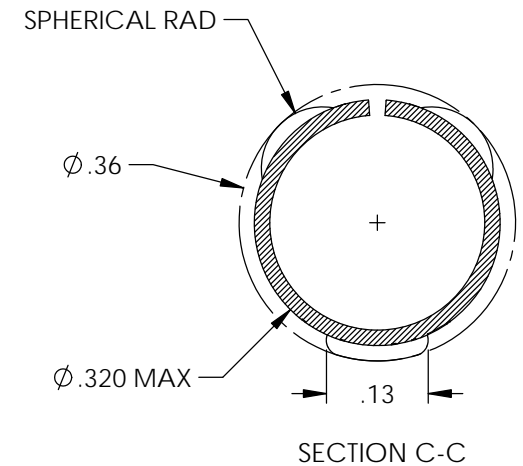
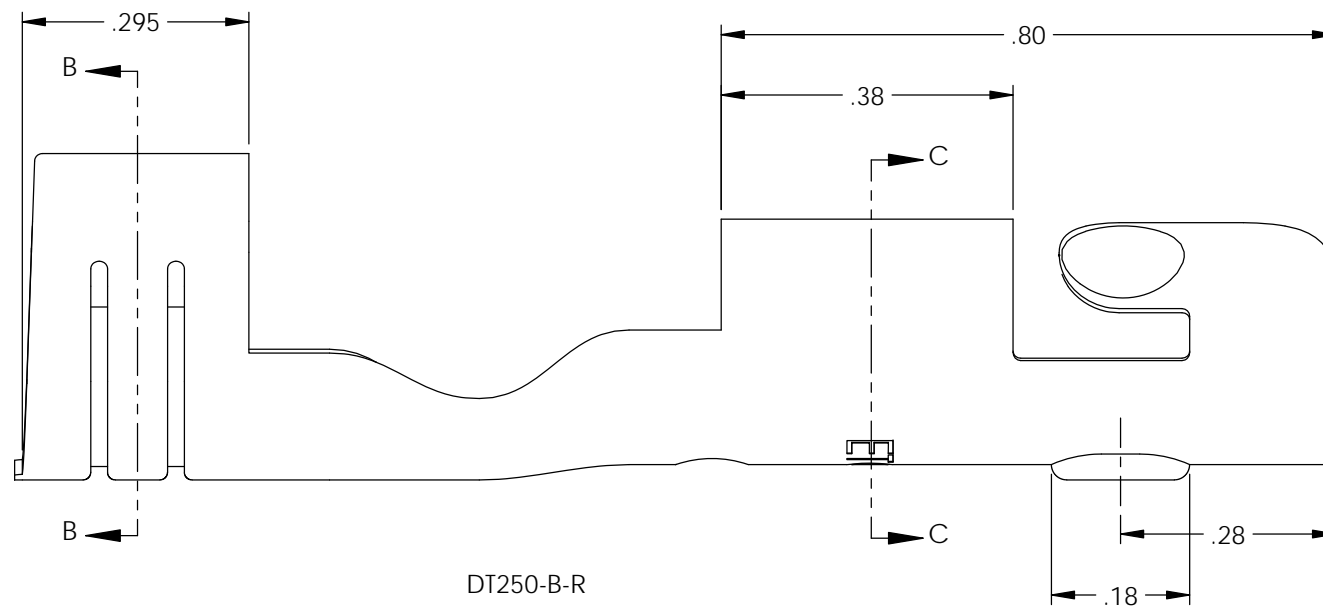
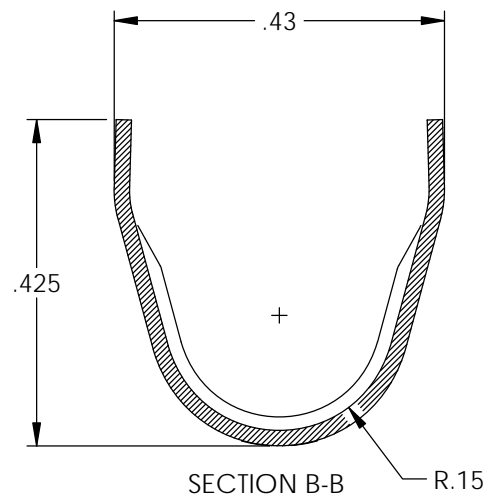
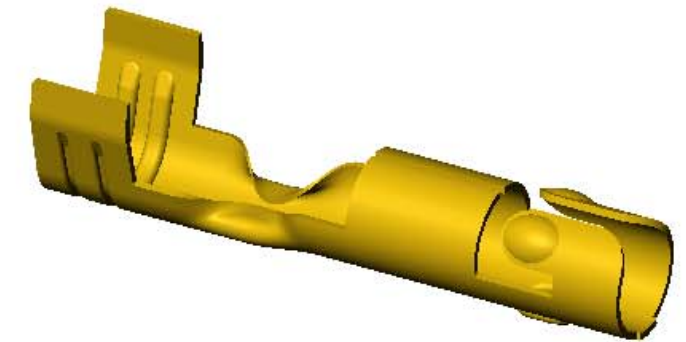
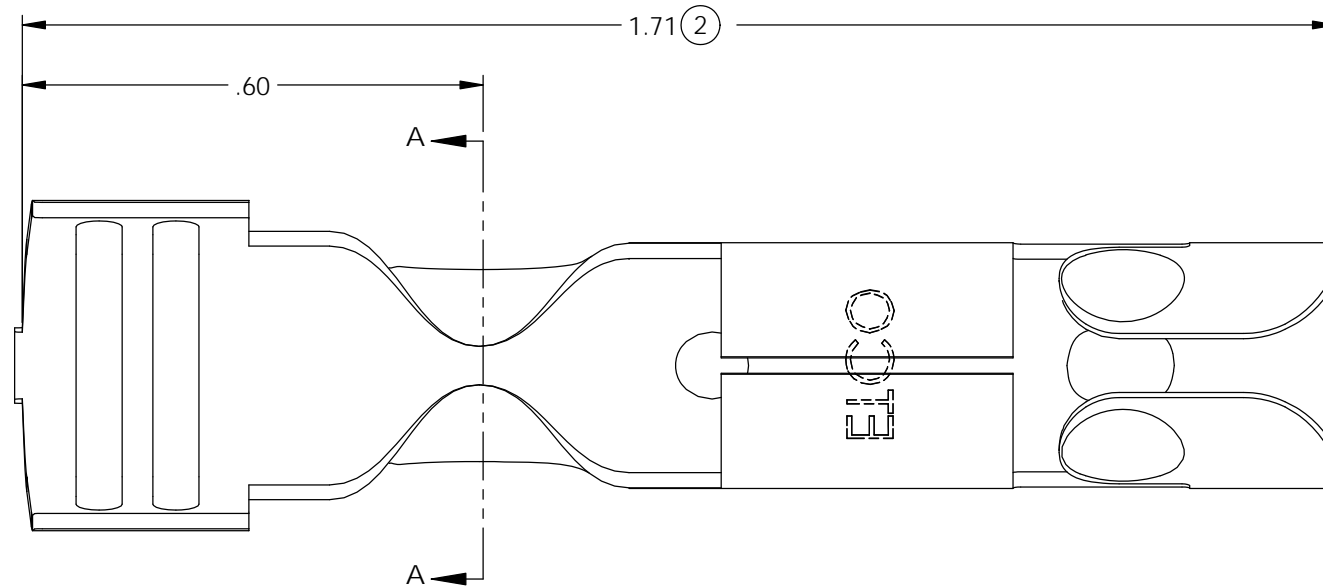
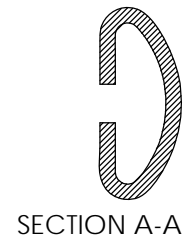


NOTES:

- MATERIAL: .020 THICK BRASS #3 TEMPER (3/4 HARD) PER ETCO METAL CODE 0-0019.
- MATERIAL: .020 THICK S430 STAINLESS STEEL ANEALLED TO TEMPER PER ETCO METAL CODE 0-0072.
- MATERIAL: .020 THICK, ELECTRO-GALVANIZED ZINC PLATED STEEL #3 TEMPER (1/4 HARD) PER ETCO METAL CODE 0-0029.
- TERMINAL MUST BE CAPABLE OF A 90° BEND IN THE FORWARD DIRECTION WITHOUT FRACTURE.
- PARTS MAY BE COATED WITH A LIGHT FILM OF LUBRICATION USED IN THE MANUFACTURING PROCESS.
- WIRE RANGE: 8mm.

P/C	DESCRIPTION	MAT'L	REWIND
15074	DT250-HB-B	NOTE 1	NO
15176	DT250-HB-B-R	NOTE 1	YES
15317	DT250-SS-B	NOTE 2	NO
15329	DT250-SS-B-R	NOTE 2	YES
	DT250-BZS-B	NOTE 3	NO

Rev.	Description of Change/ SCN#	Date
1	ECR# 4870 SCJ Redrawn in SW from ACAD Org.Eng.Dwg.Date: 10/24/89	4/04/19
2	ECR# 6008 SCJ	6/12/20



UNCONTROLLED COPY

<p>THIRD ANGLE PROJECTION TOLERANCES UNLESS OTHERWISE SPECIFIED INCHES: .XX - ±.030 .XXX - ±.015 ANGLES: ±5°</p>	<p>TOOL NO. 2049</p>	<p>Title: Distributor Terminal</p>		
	<p>DO NOT SCALE DWG.</p>	<p>Drawn By: S.Johnson</p>	<p>Date: 4/04/19</p>	
<p>ETCO Incorporated Engineered Products 25 Bellows Street Warwick, RI 02888 Phone: (401) 467-2400 Fax: (401) 467-9230 www.ETCO.com</p>		<p>Design Control By: ETCO</p>	<p>Scale: 4X</p>	<p>Size B</p>
<p>Dwg. No.: DT250-B cust</p>				