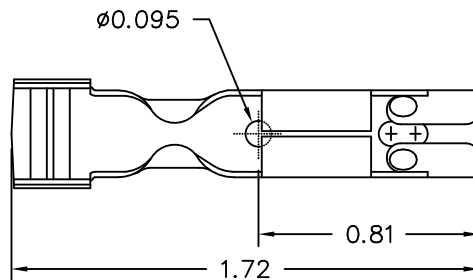


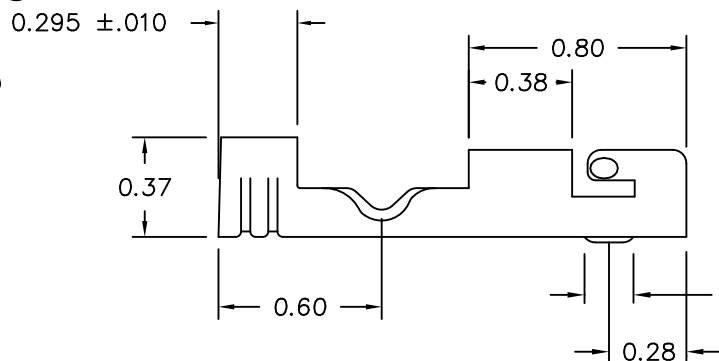
CUSTOMER PRINT

(B)

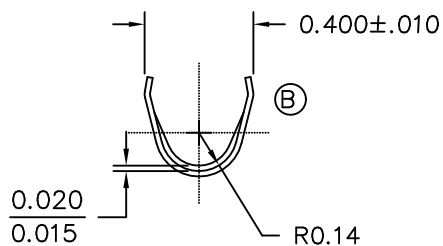
FOR MAXIMUM PERFORMANCE AND RELIABILITY,
ALWAYS USE ETCO ENGINEERED IGNITION TERMINALS
WITH ETCO AUTOMOTIVE INSULATORS.



(A)

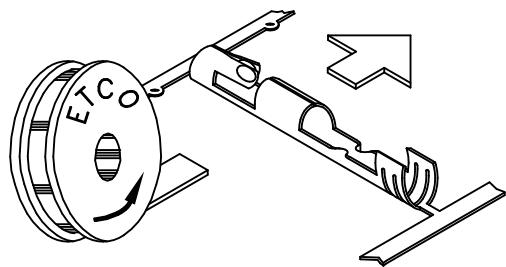


SPHERICAL
RADIUS

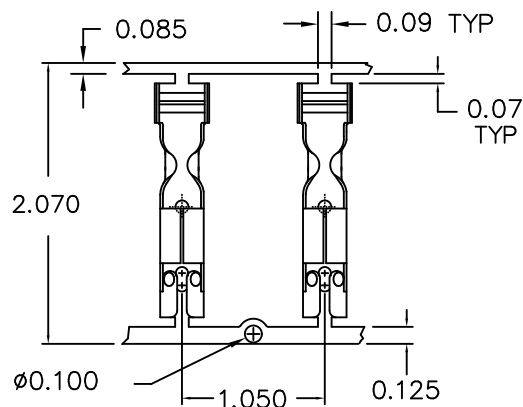


NOTE:

PART MAY BE COATED WITH A LIGHT
FILM OF LUBRICATION USED IN THE
MANUFACTURING PROCESS.



DIRECTION OF FEED
FROM REEL
TOWARD APPLICATION



VIEW OF STRIP EXITING
FROM TOOL

REV.	DESCRIPTION	DATE	TOLERANCES UNLESS SPECIFIED	
			FRACTIONS ±	ANGLES ± 2°
A	0.295 ± 0.010 WAS 0.29	10-17-91	.000 ± .005	
B	ADD TAPERED RIB, NOTE	4/19/94	.00 ± .010	
DO NOT SCALE DRAWING				
ETCO INCORPORATED AUTOMOTIVE DIVISION 3004 62ND AVENUE EAST BRADENTON, FLORIDA 34203 (941) 756-8426				
DISTRIBUTOR TERMINAL				
MATERIAL			DATE	
SEE TABLE			05-29-91	
DRAWN BY CNP	CHECKED BY	SCALE 2=1 1=1	PART NO. DT257B	