

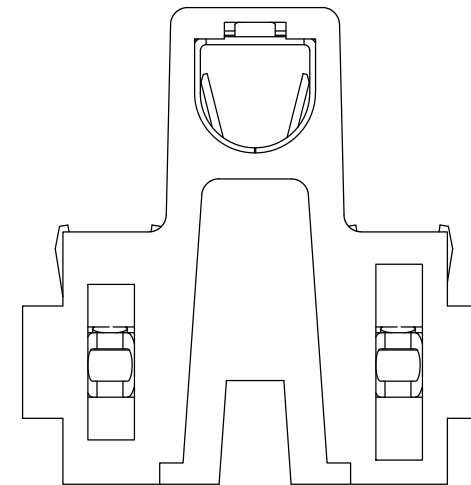
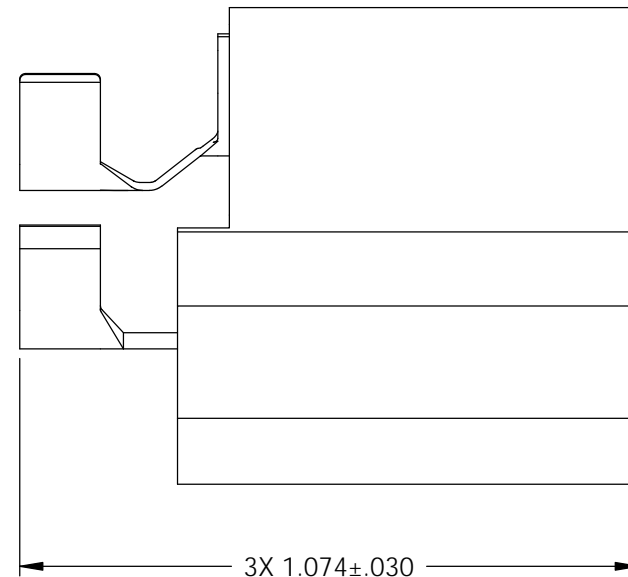
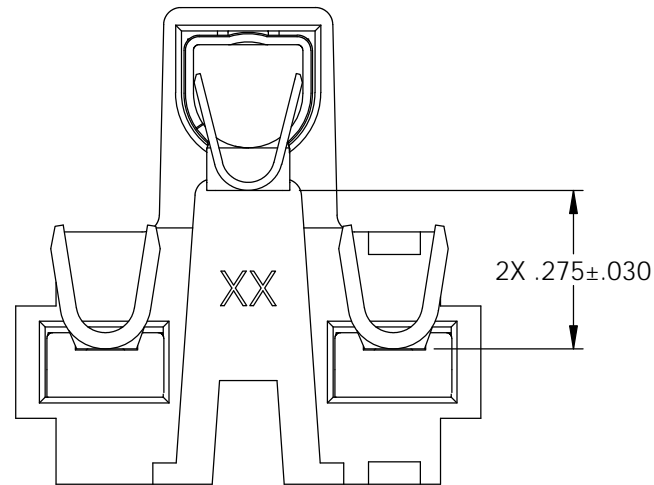
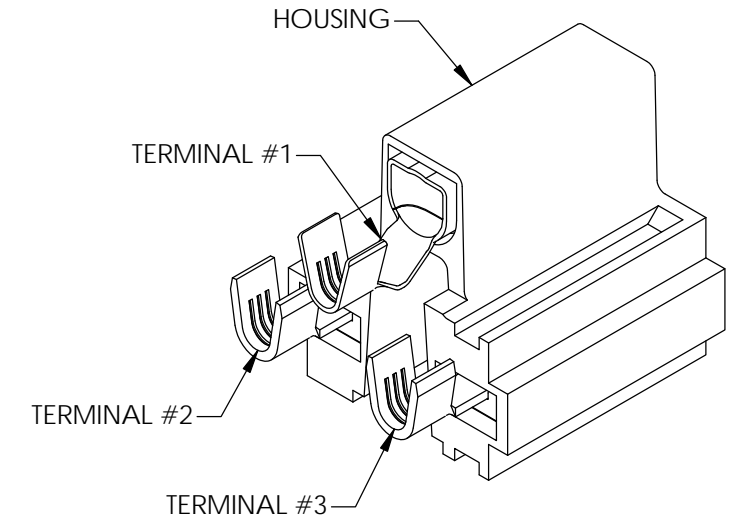
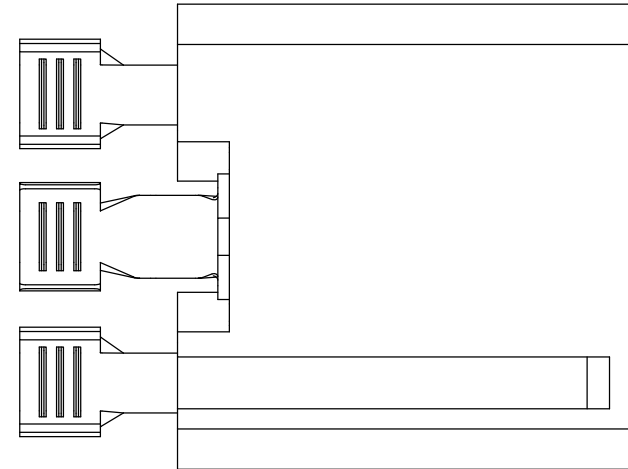
NOTE:

1. THIS ASSEMBLY IS UL RECOGNIZED PER ETCO FILE NUMBER E177335.

③

| ASSEMBLY ITEM | P/C | DESCRIPTION | MAT'L | PLATING | WIRE RANGE |
|---------------|-------|---------------------|-------|---------|------------|
| TERMINAL #1 | | RE187N-9-HB-FAE ① ② | BRASS | NONE | 10-12 AWG |
| TERMINAL #2 | | CF156F-5-HB-FAE ② | BRASS | NONE | 10-12 AWG |
| TERMINAL #3 | | CF156F-5-HB-FAE ② | BRASS | NONE | 10-12 AWG |
| HOUSING | 81057 | FAE-3 | NYLON | N/A | N/A |

| Rev. | Description of Change/ SCN# | Date |
|------|-----------------------------|---------|
| - | INITIAL CUST. DWG RELEASE | 7/7/11 |
| 1 | ECR# 1610 SCJ | 8/31/12 |
| 2 | ECR# 2423 SCJ | 8/07/13 |
| 3 | ECR# 5194 SCJ | 7/30/18 |



UNCONTROLLED COPY

| | | | | |
|---|---------------------------------|--|------------------------------------|----------------------------|
| <p>THIRD ANGLE PROJECTION TOLERANCES UNLESS OTHERWISE SPECIFIED INCHES: .XX - ±.030 .XXX - ±.015 ANGLES: ±5°</p> | <p>TOOL NO. 0861</p> | <p>Title: FEMALE BRIDGE HOUSING-P/C 37030</p> | | |
| | | <p>DO NOT SCALE DWG.</p> | <p>Drawn By: J. RAMALHO</p> | <p>Date: 7/7/11</p> |
| <p>ETCO Incorporated Engineered Products 25 Bellows Street Warwick, RI 02888 Phone: (401) 467-2400 Fax: (401) 467-9230 www.ETCO.com</p> | | <p>Chk'd/App'd By:</p> | <p>Scale: 2X</p> | <p>Size B</p> |
| <p>Dwg. No.: FAE-7 VR513 cust</p> | | | | |