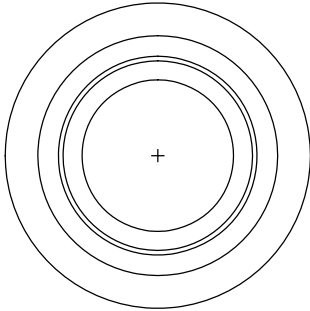
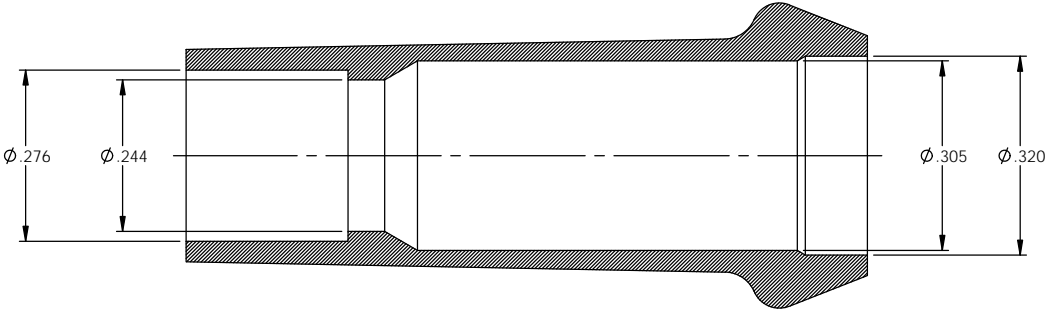
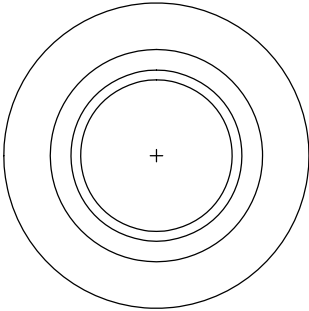
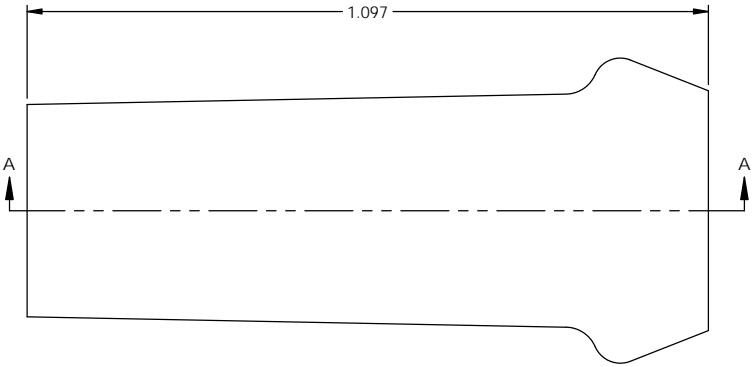


P/C	DESCRIPTION	COLOR	MATERIAL	MATES WITH
16156	FE-2 FERRULE	BLACK	6/6 NYLON	DT1000-HB-TT



NOTE:
FOR MAXIMUM PERFORMANCE AND RELIABILITY,
ALWAYS USE ETCO ENGINEERED IGNITION TERMINALS
WITH ETCO AUTOMOTIVE INSULATORS.

Rev.	Description of Change/ SCN#	Date



SECTION A-A

THIS PRINT IS THE PROPERTY OF ETCO INCORPORATED. NO PART OF THIS DESIGN MAY BE USED IN ANY WAY WITHOUT WRITTEN CONSENT FROM ETCO INCORPORATED.

UNCONTROLLED COPY				
 THIRD ANGLE PROJECTION TOLERANCES UNLESS OTHERWISE SPECIFIED INCHES: .XX - ±.030 .XXX - ±.015 ANGLES: ±5°	TOOL NO.	Title:		
	N/A	Nylon Boot Insert		
	 ETCO	DO NOT SCALE DWG.	Drawn By: S.Johnson	Date: 6/24/19
ETCO Incorporated Engineered Products 25 Bellows Street Warwick, RI 02888 Phone: (401) 467-2400 Fax: (401) 467-9230 www.ETCO.com		Dwg. No:	Scale: 5X Size B FE-2	