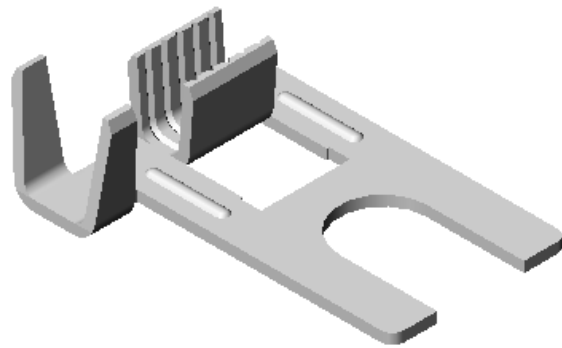


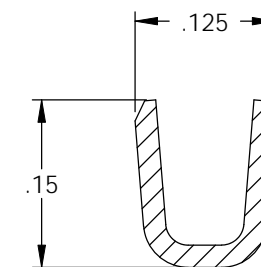
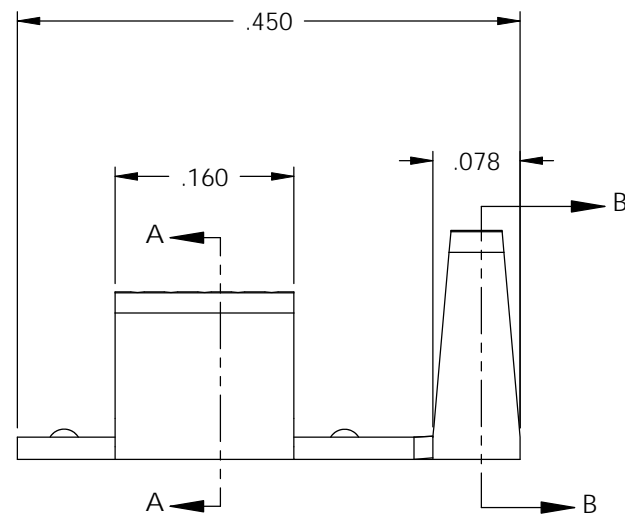
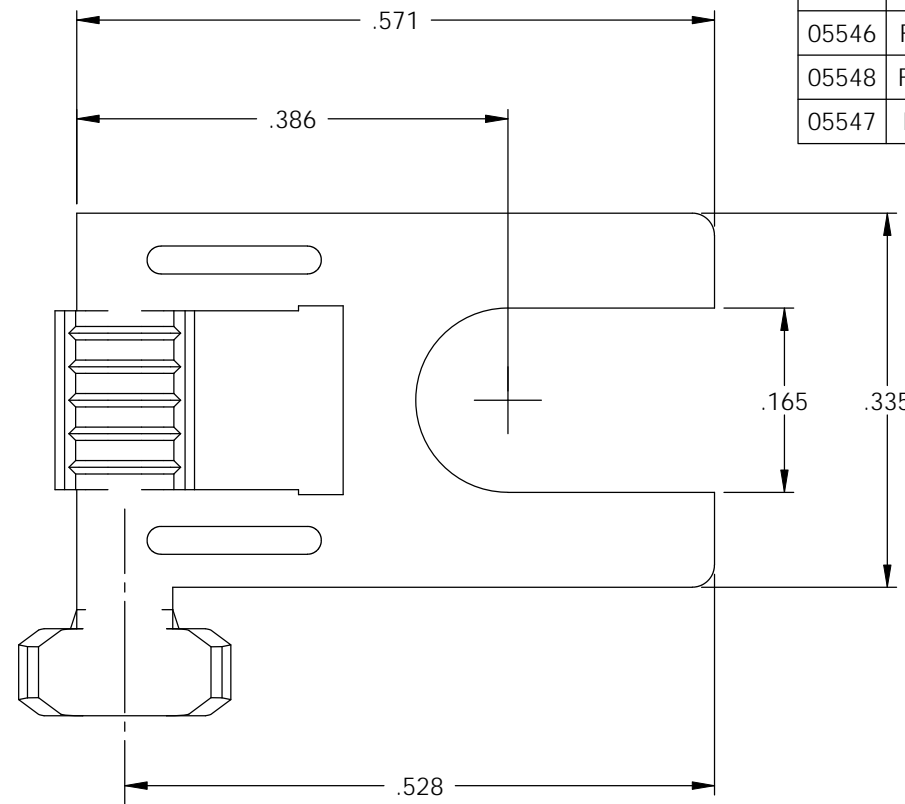
NOTES:

- MATERIAL: .020 THICK BRASS
#2 TEMPER (1/2 HARD)
PER ETCO METAL CODE 00395.
- MATERIAL: .020 THICK PRETINNED BRASS
#2 TEMPER (1/2 HARD)
PER ETCO METAL CODE 01446.
- PARTS MAY BE COATED WITH A LIGHT FILM OF LUBRICATION USED IN THE MANUFACTURING PROCESS.
- WIRE RANGE: 16-18 AWG.
- INSULATION DIAMETER RANGE: ϕ .090-.125.

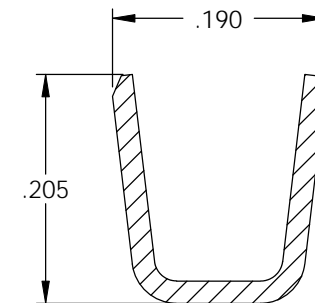


P/C	DESCRIPTION	MAT'L	REWIND
05544	FFS835L-165-HB	NOTE 1	YES
05546	FFS835L-165-THB	NOTE 2	YES
05548	FFS835R-165-THB	NOTE 2	NO
05547	FFS835R-165-HB	NOTE 1	NO

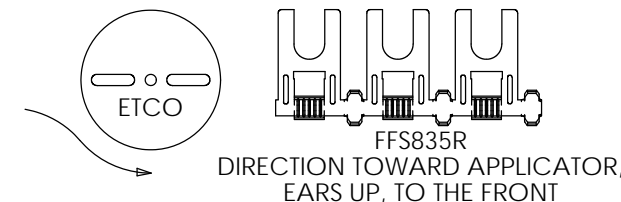
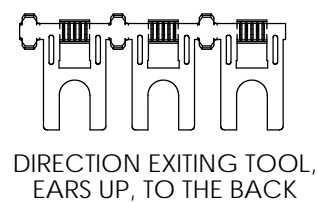
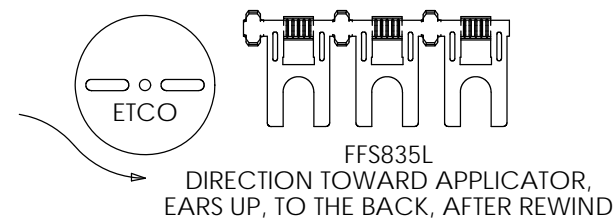
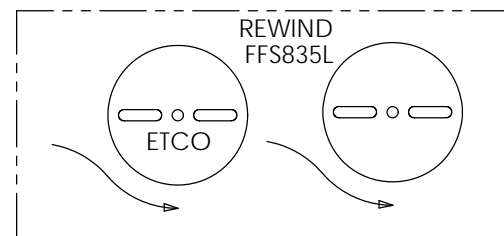
Rev.	Description of Change/ SCN#	Date
1	ADDED ALL P/Cs AND NECESSARY M/Cs SCJ ORG.ENG.DWG.DATE: 10-15-76	3-5-08



SECTION A-A
SCALE 6 : 1



SECTION B-B
SCALE 6 : 1



THIS PRINT IS THE PROPERTY OF ETCO INCORPORATED. NO PART OF THIS DESIGN MAY BE USED IN ANY WAY WITHOUT WRITTEN CONSENT FROM ETCO INCORPORATED.

UNCONTROLLED COPY

<p>THIRD ANGLE PROJECTION TOLERANCES UNLESS OTHERWISE SPECIFIED INCHES: .XX - \pm.030 .XXX - \pm.015 ANGLES: \pm5°</p>	TOOL NO. 0086	Title: FLAG SPADE		
		DO NOT SCALE DWG.	Drawn By: S.JOHNSON	Date: 3-6-08
ETCO Incorporated Engineered Products 25 Bellows Street Warwick, RI 02888 Phone: (401) 467-2400 Fax: (401) 467-9230 www.ETCO.com		Chk'd/App'd By:	Scale: 6X	Size B
		Dwg. No.: FFS835L & R cust		