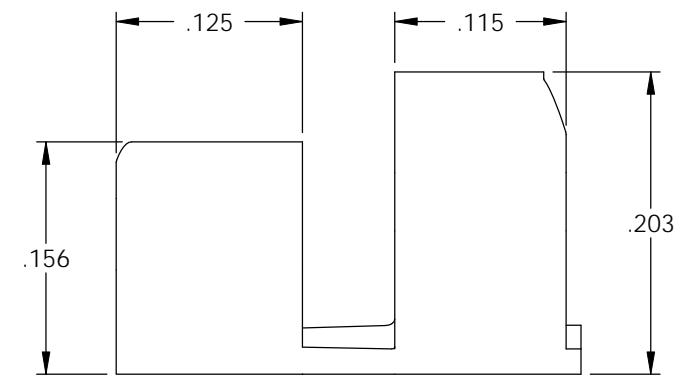
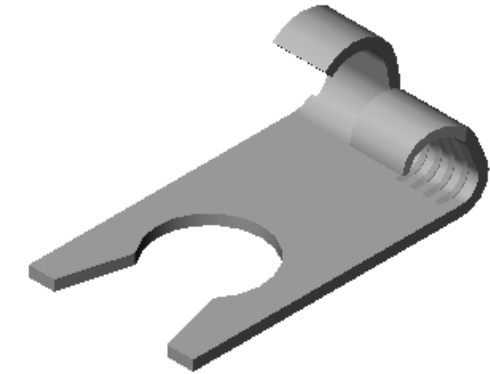
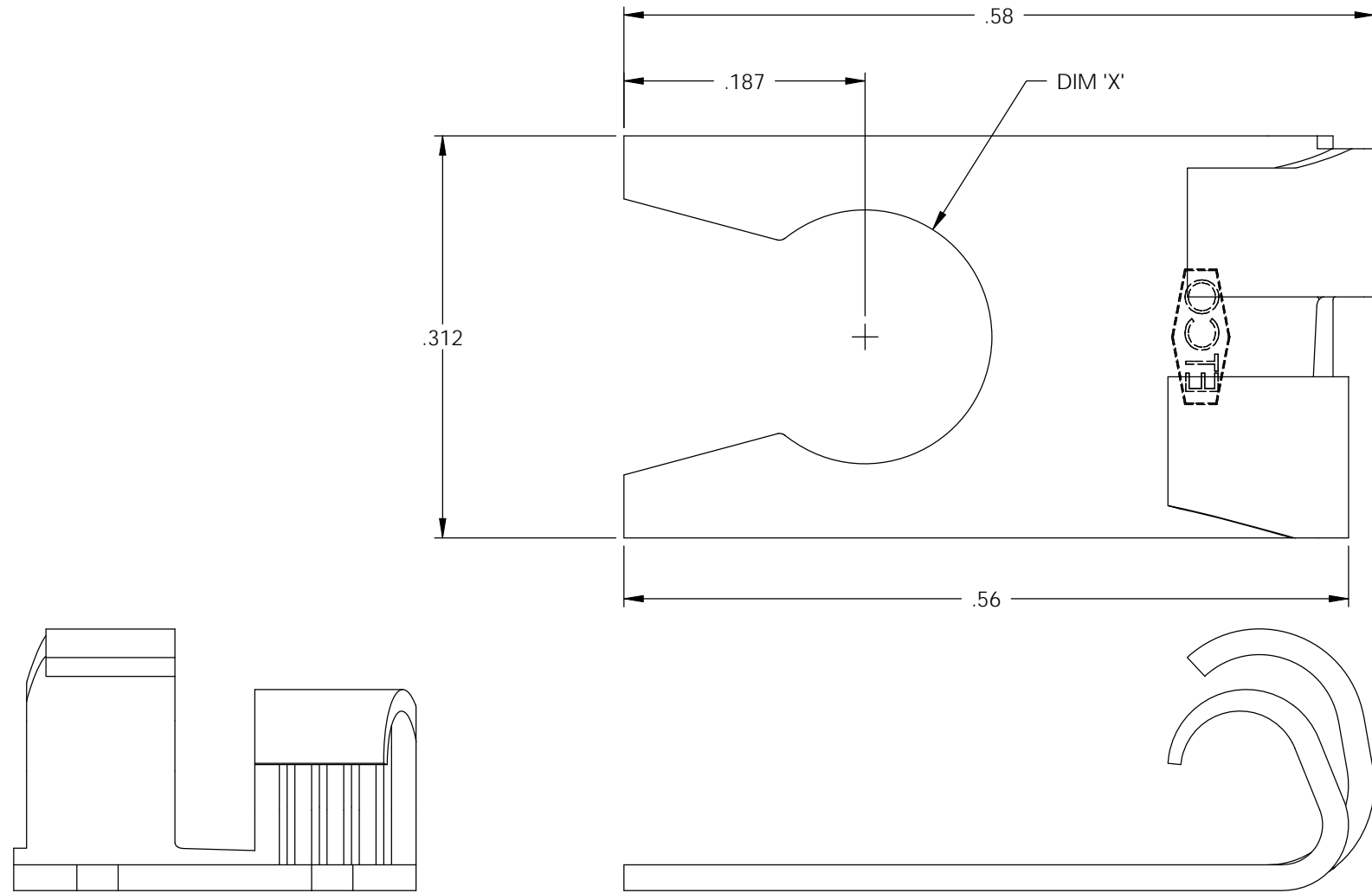


NOTES:

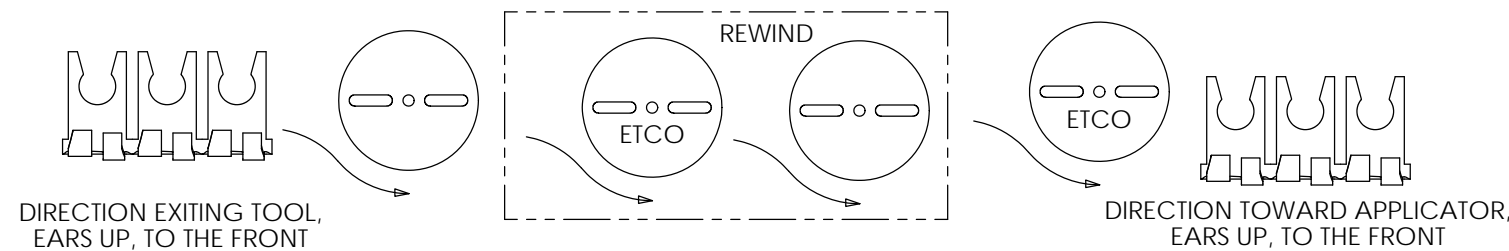
1. MATERIAL: .020 THICK, BRASS, #2 TEMPER (1/2 HARD), PER ETCO METAL CODE 00410.
2. MATERIAL: .020 THICK, PRE-TINNED BRASS, #2 TEMPER (1/2 HARD), PER ETCO METAL CODE 01470.
3. PARTS MAY BE COATED WITH A LIGHT FILM OF LUBRICATION USED IN THE MANUFACTURING PROCESS.
4. WIRE RANGE: 20-16 AWG.
5. INSULATION DIAMETER RANGE: ϕ .100-.125

P/C	DESCRIPTION	DIM 'X'	DIM 'Y'	MAT'L
05670	FK810R-8-HB	.171	.130	NOTE 1
05680	FK810R-8-THB	.171	.130	NOTE 2
05710	FK810R-10-HB	.197	.150	NOTE 1
05720	FK810R-10-THB	.197	.150	NOTE 2

Rev.	Description of Change/ SCN#	Date
1	REDRAWN ON SOLIDWORKS NO CHANGES SCJ ORG.ENG.DWG.DATE: 4-26-67	3-19-08



UNCONTROLLED COPY



THIS PRINT IS THE PROPERTY OF ETCO INCORPORATED. NO PART OF THIS DESIGN MAY BE USED IN ANY WAY WITHOUT WRITTEN CONSENT FROM ETCO INCORPORATED.

<p>THIRD ANGLE PROJECTION TOLERANCES UNLESS OTHERWISE SPECIFIED INCHES: .XX - \pm.030 .XXX - \pm.015 ANGLES: \pm5°</p>	<p>TOOL NO. 0079</p>	<p>Title: FLAG KEYHOLE</p>		
		<p>DO NOT SCALE DWG.</p>	<p>Drawn By: S.JOHNSON</p>	<p>Date: 3-19-08</p>
<p>ETCO Incorporated Engineered Products 25 Bellows Street Warwick, RI 02888 Phone: (401) 467-2400 Fax: (401) 467-9230 www.ETCO.com</p>		<p>Chk'd/App'd By:</p>	<p>Scale: 8X</p>	<p>Size:</p>
		<p>Dwg. No.: FK810R cust</p>		