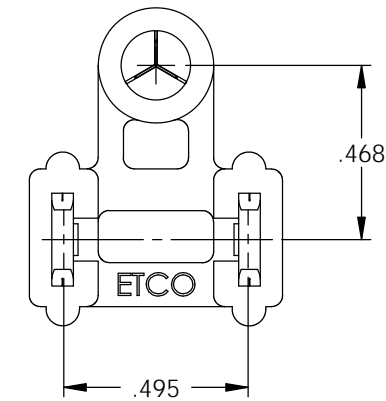
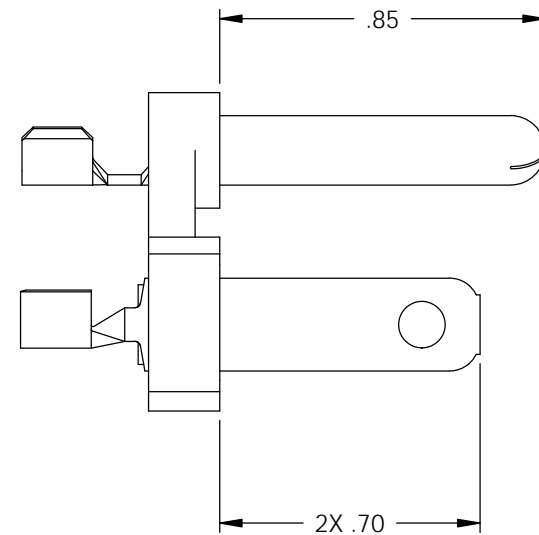
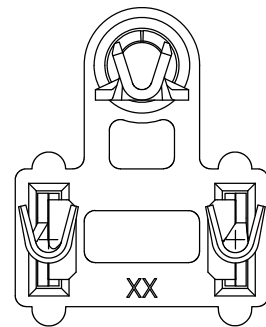
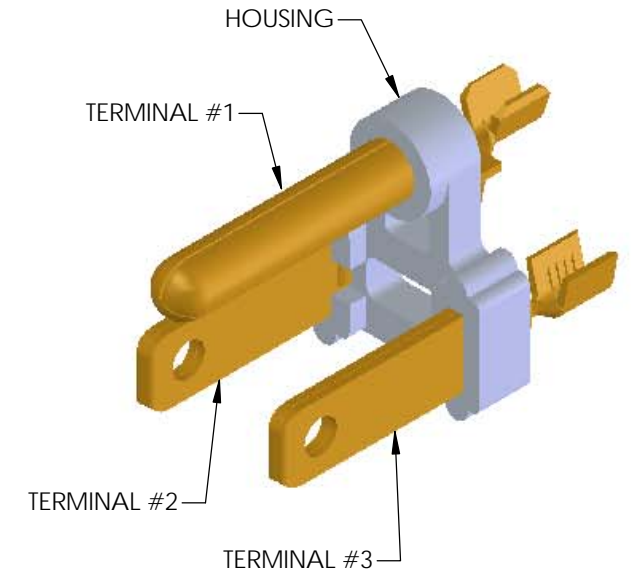
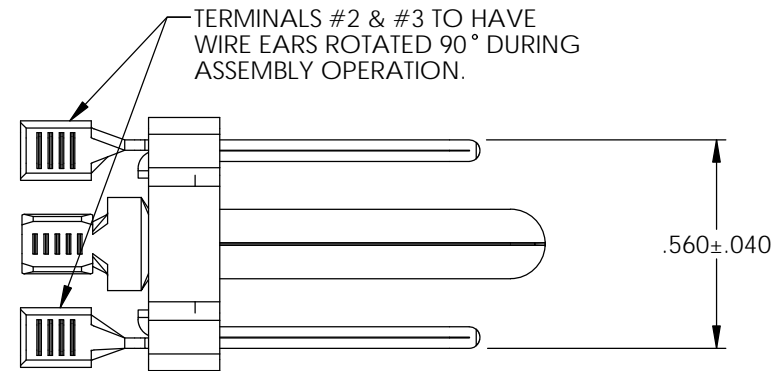


Rev.	Description of Change/ SCN#	Date
1	TRANSFER FROM CP TO EP	3-24-04
2	SCN# 103166 SCJ	4-7-06
3	SCN# 103195 SCJ	6-7-06
4	ECR# 1264 SCJ	4/9/12

ASS'Y ITEM	P/C	DESCRIPTION	MAT'L	PLATING	WIRE RANGE
TERMINAL #1	14029	PN187H3*CRA-HB	BRASS	NONE	14-18 AWG
TERMINAL #2	14015	PPBF4*A-HB	BRASS	NONE	14-18 AWG
TERMINAL #3	14015	PPBF4*A-HB	BRASS	NONE	14-18 AWG
HOUSING	81011	BHBP01	POLYPROPYLENE	N/A	N/A

NOTES:
 1. THIS PART IS UL RECOGNIZED.
 ETCO FILE NUMBER E164056



UNCONTROLLED COPY

 THIRD ANGLE PROJECTION	TOOL NO. 0861	Title: GROUND BLADE BRIDGE ASSEMBLY-P/C 37001		
	TOLERANCES UNLESS OTHERWISE SPECIFIED INCHES: .XX - ±.030 .XXX - ±.015 ANGLES - ±5°	 ETCO	DO NOT SCALE DWG.	
ETCO Incorporated Engineered Products 25 Bellows Street Warwick, R.I. 02888 Phone: (401)467-2400 FAX: (401)467-9230 www.ETCO.com			Date: 6/24/03	
		Chk'd/App'd By:		Scale: 2X
		Dwg. No.:		Size B
				GBBA