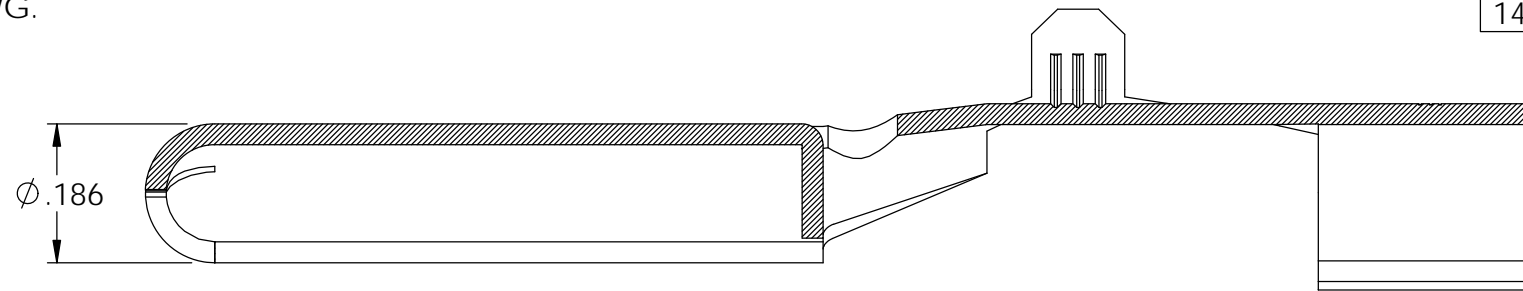


NOTES:

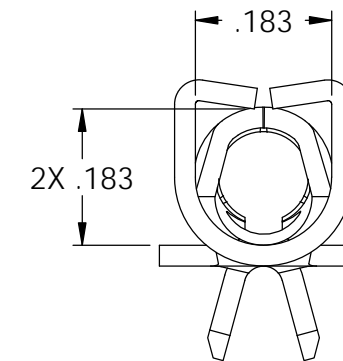
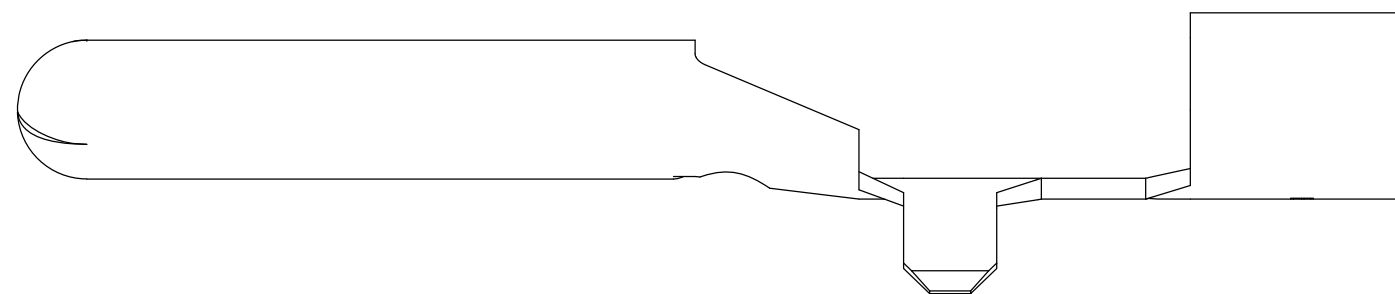
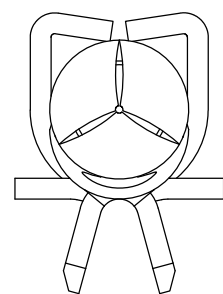
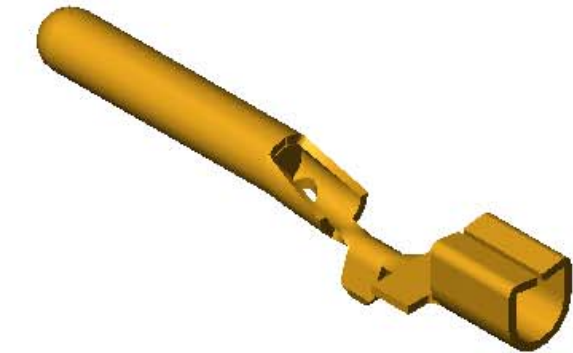
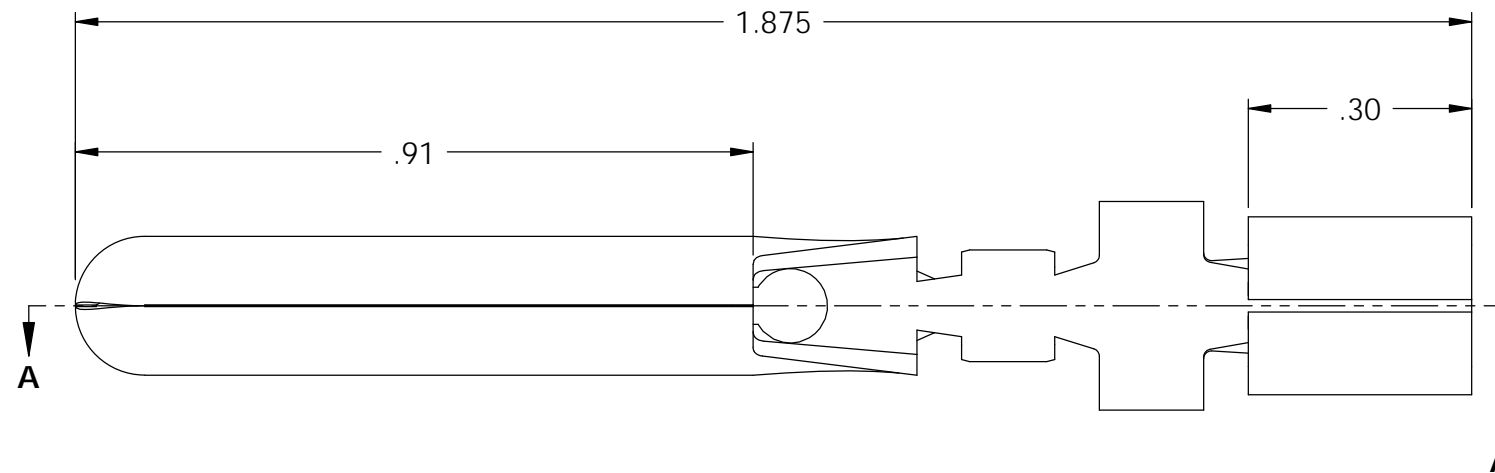
- MATERIAL: .028 THICK C26000 BRASS; 1/2 HARD
ANNEALED TO TEMPER; PER ETCO METAL CODE 00113.
- WIRE RANGE: #16-#18 AWG.

P/C	DESCRIPTION	MAT'L
14408	GCMF-C-HB	NOTE 1

Rev.	Description of Change/ SCN#	Date
1	TRANSFER FROM CP TO EP	6-30-04
2	SCN# 102641 SCJ	7-19-04



SECTION A-A
SCALE 4 : 1



UNCONTROLLED COPY

<p>THIRD ANGLE PROJECTION TOLERANCES UNLESS OTHERWISE SPECIFIED INCHES: .XX - ±.030 .XXX - ±.015 ANGLES: ±5°</p>	<p>TOOL NO. 0875</p>	<p>Title: MALE/FEMALE GROUND PIN</p>		
		<p>DO NOT SCALE DWG.</p>	<p>Drawn By: S.JOHNSON</p>	<p>Date: 6/30/04</p>
<p>ETCO Incorporated Engineered Products 25 Bellows Street Warwick, RI 02888 Phone: (401) 467-2400 Fax: (401) 467-9230 www.ETCO.com</p>		<p>Chk'd/App'd By:</p>	<p>Scale: 4X</p>	<p>Size B</p>
		<p>Dwg. No.: GCMF-C Loose piece - cust</p>		