

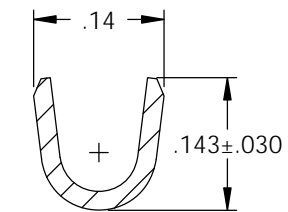
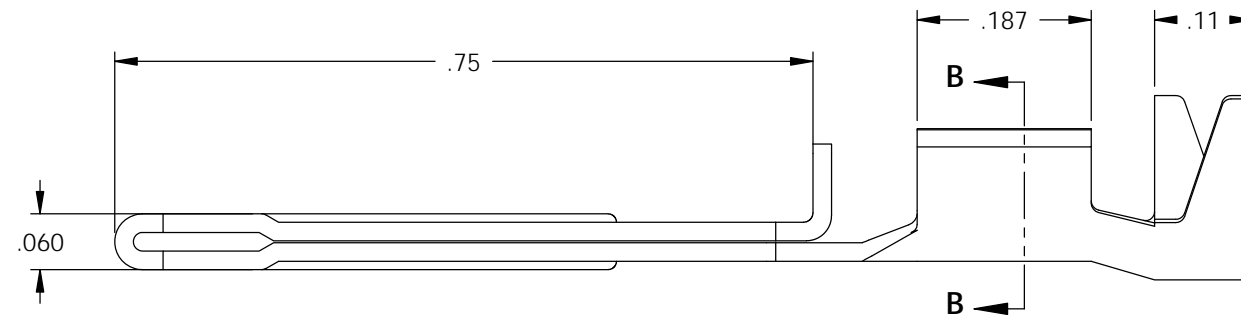
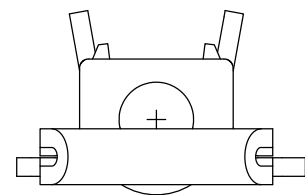
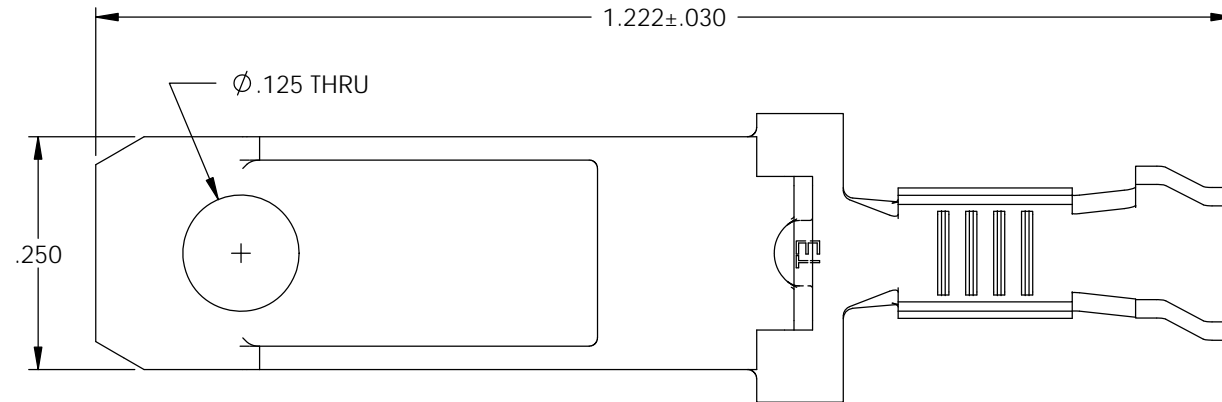


NOTE:

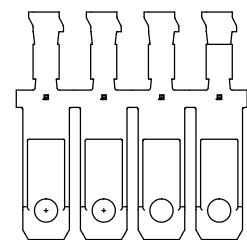
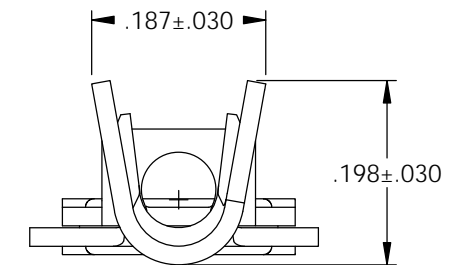
- 1.) MAT'L: .020 BRASS,
#2 TEMPER (HALF HARD), ANNEALED TO TEMPER,
PER ETCO METAL CODE NO. 00095.
- 2.) MAT'L: .020 PRE-TINNED BRASS,
#2 TEMPER (HALF HARD), ANNEALED TO TEMPER,
PER ETCO METAL CODE NO. 01588.
- 3.) PARTS MAY BE COATED WITH A LIGHT FILM
OF LUBRICATION USED IN THE MANUFACTURING
PROCESS.
- 4.) FOR REWINDS SEE WI-09-10-08.
- 5.) WIRE RANGE: 14-18 AWG.
- 6.) INSUL RANGE: ϕ .120 - ϕ .175

P/C	DESCRIPTION ④	MAT'L	REWIND		
09840	J817F2-ARB-HB	NOTE 1	YES	X	X
09842	J817F2-ARB-THB	NOTE 2	YES	X	X
14058	J817F2-ARC-HB	NOTE 1	YES	X	X

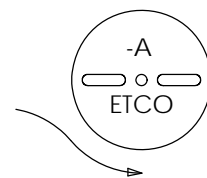
Rev.	Description of Change/ SCN#	Date
1	TRANSFERED FROM CP SCJ	10-26-04
2	SCN# 102918 SCJ	4-4-05
3	SCN# 140383 JMR	6-10-08
4	ECR# 816 SCJ	11-2-11



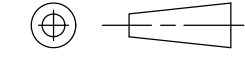

SECTION B-B
SCALE 5 : 1



DIRECTION EXITING TOOL,
EARS DOWN, TO THE BACK
SEE NOTE 4



UNCONTROLLED COPY

 THIRD ANGLE PROJECTION TOLERANCES UNLESS OTHERWISE SPECIFIED INCHES: .XX - ±.030 .XXX - ±.015 ANGLES - ±5°	TOOL NO. 0858	Title: PADDED SPACE BLADE		
		DO NOT SCALE DWG.	Drawn By: S. JOHNSON	Date: 8-7-03
	ETCO Incorporated Engineered Products 25 Bellows Street Warwick, R.I. 02888 Phone: (401)467-2400 FAX: (401)467-9230 www.ETCO.com	Chk'd/App'd By:	Scale: 5:1	Size B
		Dwg. No.:	J817F2	