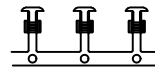
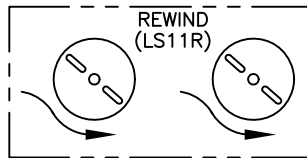
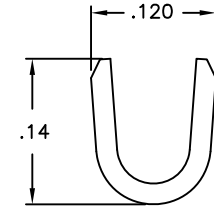
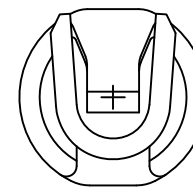
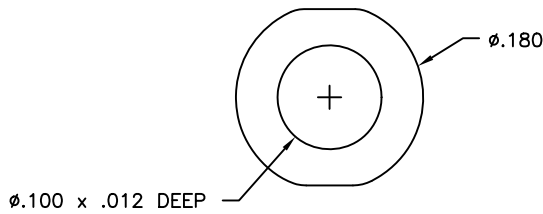
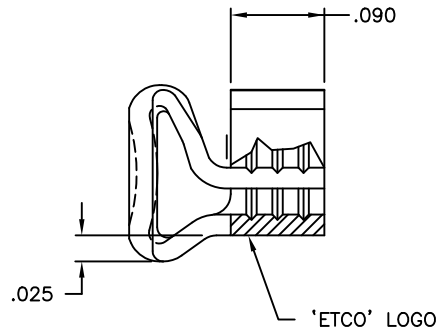
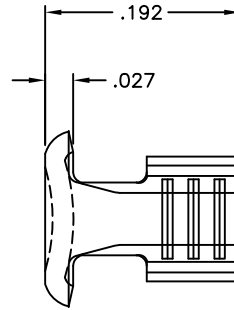


NOTE:

- 1.) MAT'L: .020 THK, BRASS, #2 TEMPER (HALF HARD), PER ETCO METAL CODE NO. 00390.
- 2.) PARTS MAY BE COATED WITH A LIGHT FILM OF LUBRICATION USED IN THE MANUFACTURING PROCESS.
- 3.) WIRE RANGE: 22-18 AWG

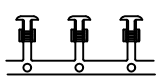
Rev.	Description of Change/ SCN#	Date
1	SCN# 140263 SCJ	11-6-07

P/C	DESCRIPTION	REWIND
09634	LS11R-HB	YES
09736	LS11-HB	NO

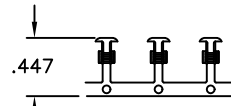


(LS11R)

DIRECTION TOWARD APPLICATOR, FROM LEFT, EARS UP, CARRIER TO THE FRONT



DIRECTION EXITING TOOL, EARS UP, CARRIER TO THE FRONT



(LS11)

DIRECTION TOWARD APPLICATOR, FROM RIGHT, EARS UP, CARRIER TO THE FRONT

UNCONTROLLED COPY

<p>THIRD ANGLE PROJECTION</p>	<p>TOOL NO. 0219</p>	<p>Title: BUTTON CONTACT</p>		
		<p>DO NOT SCALE DWG.</p>	<p>Drawn By: P. McCormick</p>	<p>Date: 10-3-97</p>
<p>TOLERANCES UNLESS OTHERWISE SPECIFIED</p> <p>.XX - ±.030</p> <p>.XXX - ±.015</p> <p>Angles - ±5°</p>		<p>ETCO Incorporated Engineered Products 25 Bellows Street Warwick, R.I. 02888 Phone: (401)467-2400 FAX: (401)467-9230</p>	<p>Checked: Scale: 8:1</p>	<p>Size B</p>
		<p>Dwg. No.: C-</p>	<p>LS11 LS11R</p>	

THIS PRINT IS THE PROPERTY OF ETCO INCORPORATED. NO PART OF THIS DESIGN MAY BE USED IN ANY WAY WITHOUT WRITTEN CONSENT FROM ETCO INCORPORATED.

CUSTOMER DRAWING