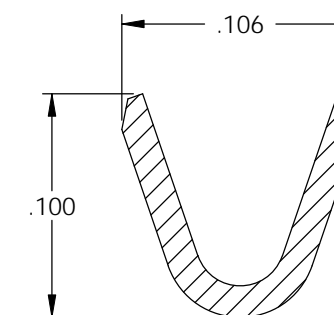
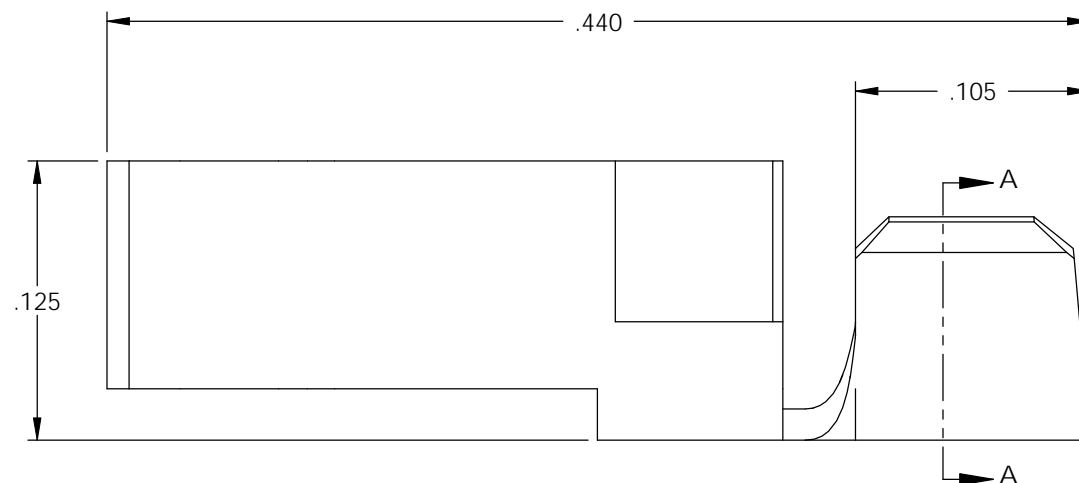
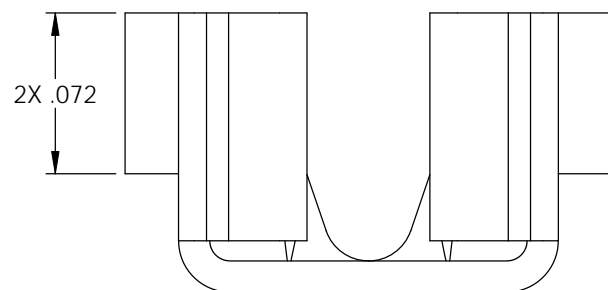
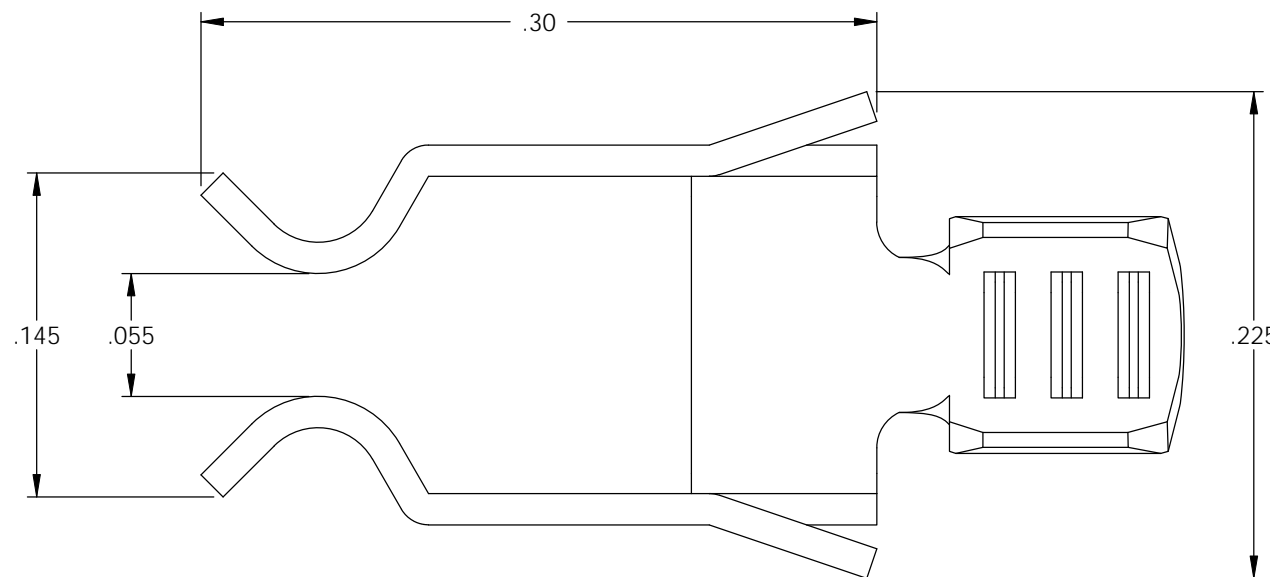
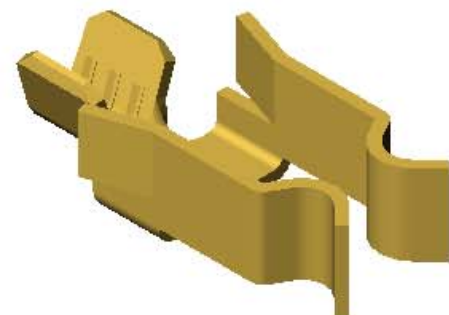


NOTES:

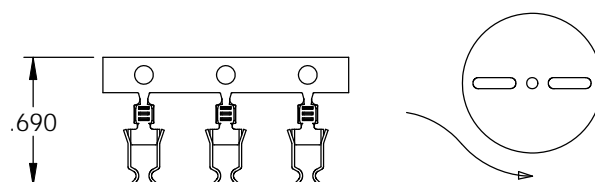
1. MATERIAL: .014 THICK, BRASS, #8 TEMPER (SPRING HARD), PER ETCO METAL CODE 00055.
2. PARTS MAY BE COATED WITH A LIGHT FILM OF LUBRICATION USED IN THE MANUFACTURING PROCESS.
3. WIRE RANGE: 18 AWG.

P/C	DESCRIPTION
09629	LSWB-4-HB

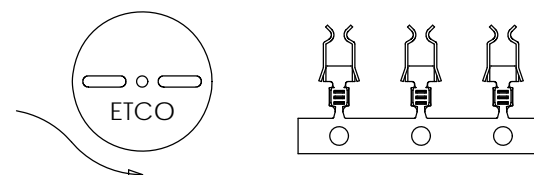
Rev.	Description of Change/ SCN#	Date
1	SCN# 140162 SCJ ORG.ENG.DWG.DATE: 12-3-01	1-22-08



SECTION A-A
SCALE 12 : 1



DIRECTION EXITING TOOL,
EARS UP, CARRIER TO THE BACK



DIRECTION TOWARD APPLICATOR,
EARS UP, CARRIER TO THE FRONT

THIS PRINT IS THE PROPERTY OF ETCO INCORPORATED. NO PART OF THIS DESIGN MAY BE USED IN ANY WAY WITHOUT WRITTEN CONSENT FROM ETCO INCORPORATED.

UNCONTROLLED COPY

<p>THIRD ANGLE PROJECTION TOLERANCES UNLESS OTHERWISE SPECIFIED INCHES: .XX - ±.030 .XXX - ±.015 ANGLES: ±5°</p>	<p>TOOL NO. 0453</p>	<p>Title: CLIP</p>		
		<p>DO NOT SCALE DWG.</p>	<p>Drawn By: S.JOHNSON</p>	<p>Date: 1-22-08</p>
<p>ETCO Incorporated Engineered Products 25 Bellows Street Warwick, RI 02888 Phone: (401) 467-2400 Fax: (401) 467-9230 www.ETCO.com</p>		<p>Chk'd/App'd By:</p>	<p>Scale: 12X</p>	<p>Size B</p>
		<p>Dwg. No.: LSWB-4 cust</p>		