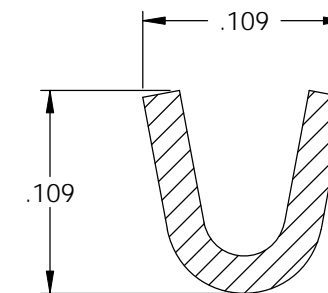
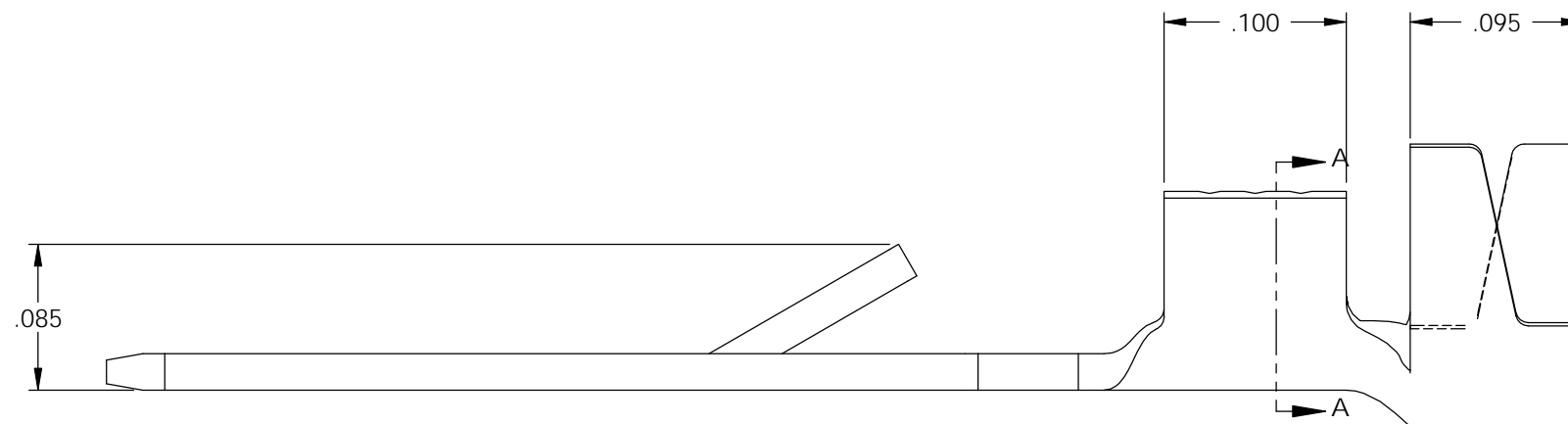
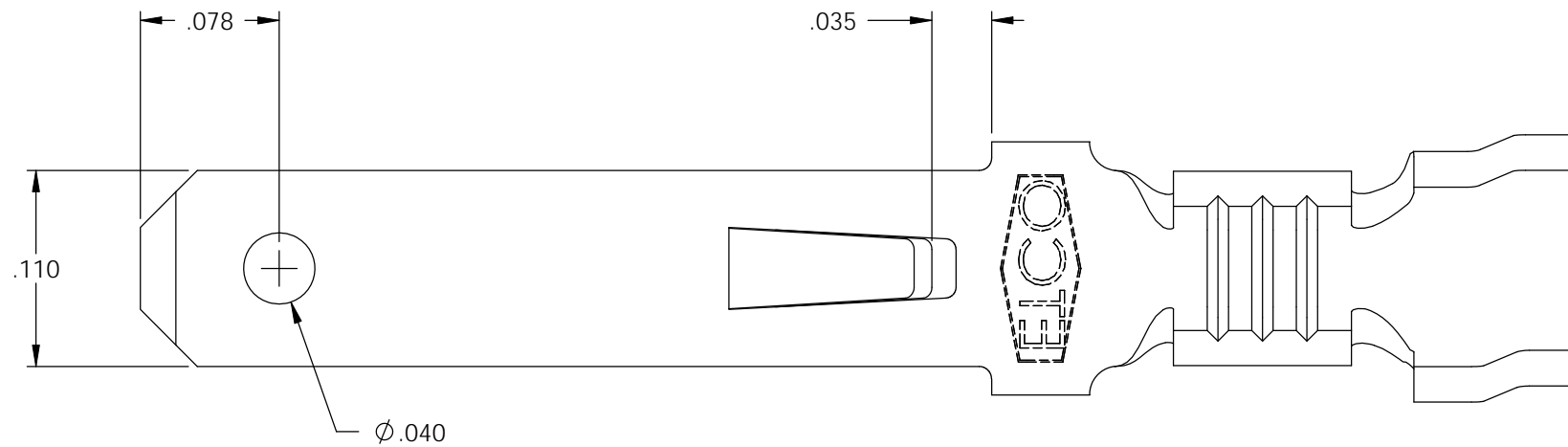


NOTES:

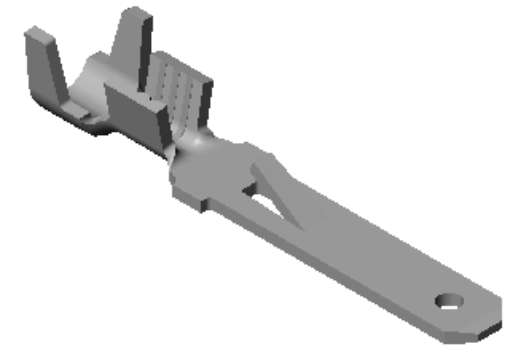
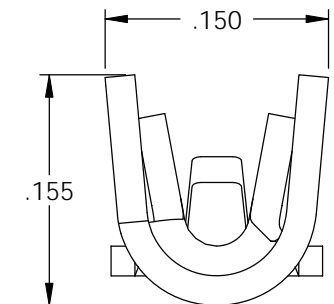
1. MATERIAL: .020 THICK, BRASS, #4 TEMPER (FULL HARD), PER ETCO METAL CODE 00403.
2. MATERIAL: .020 THICK, PRE-TINNED BRASS, #4 TEMPER, (FULL HARD), PER ETCO METAL CODE 001462.
3. PARTS MAY BE COATED WITH A LIGHT FILM OF LUBRICATION USED IN THE MANUFACTURING PROCESS.
4. WIRE RANGE: 22-18 AWG.
5. INSUL RANGE: \varnothing .055-.105

P/C	DESCRIPTION	MAT'L	UL
07916	M62L-HB	NOTE 1	X
07923	M62L-THB	NOTE 2	X

Rev.	Description of Change/ SCN#	Date
1	REDRAWN ON SOLIDWORKS NO CHANGES SCJ ORG.ENG.DWG.DATE: 8-17-77	12-18-07



SECTION A-A
SCALE 10 : 1



UNCONTROLLED COPY

TOOL NO.
0138

Title: **MALE LOCKING DISCONNECT**

DO NOT SCALE DWG.

Drawn By: **S.JOHNSON**

Date: **12-18-07**

THIRD ANGLE PROJECTION
TOLERANCES UNLESS OTHERWISE SPECIFIED
INCHES: .XX - \pm .030
.XXX - \pm .015
ANGLES: \pm 5°



ETCO Incorporated
Engineered Products
25 Bellows Street
Warwick, RI 02888
Phone: (401) 467-2400
Fax: (401) 467-9230
www.ETCO.com

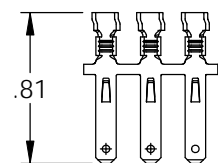
Chk'd/App'd By:

Scale: **10X**

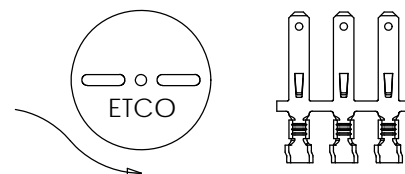
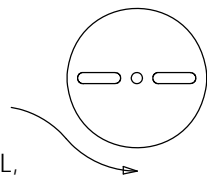
Size **B**

Dwg. No.:

M62L cust



DIRECTION EXITING TOOL,
EARS UP, TO THE BACK



DIRECTION TOWARD APPLICATOR,
FROM LEFT, EARS UP, TO THE FRONT