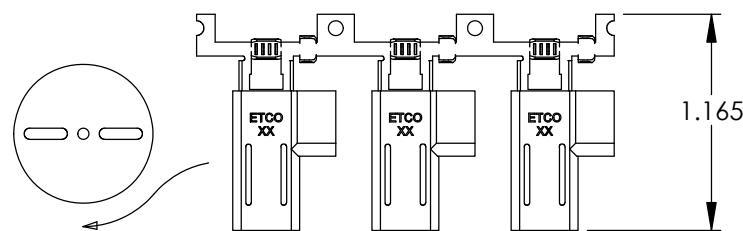
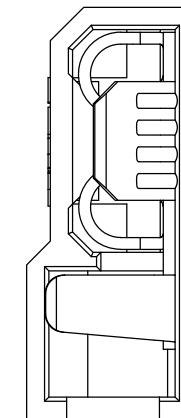
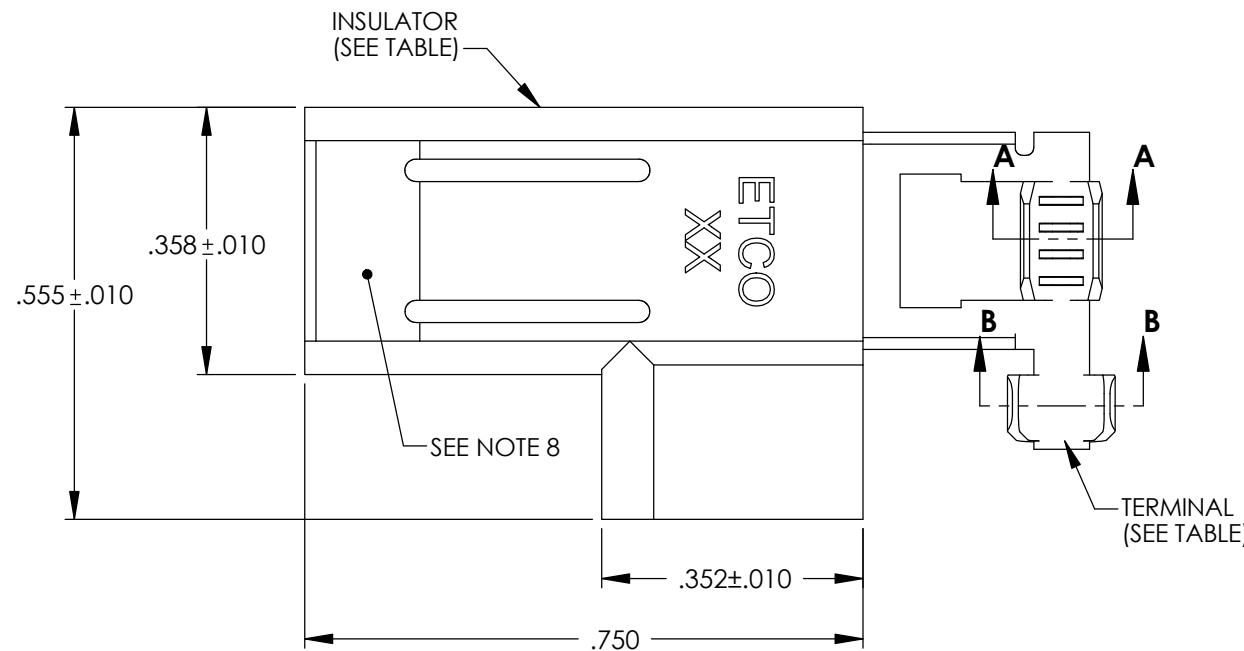
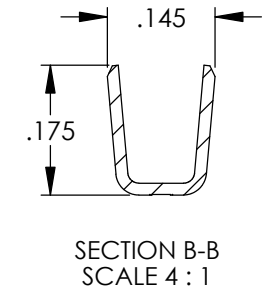
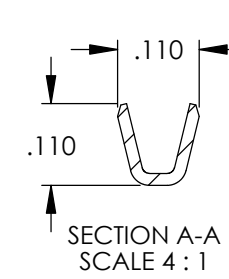
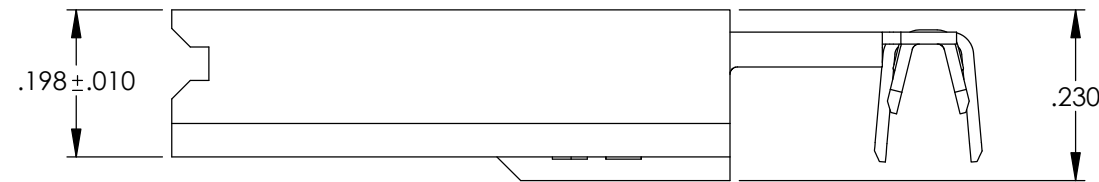
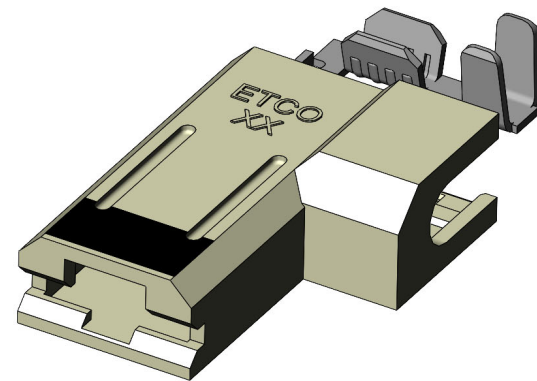


NOTES:

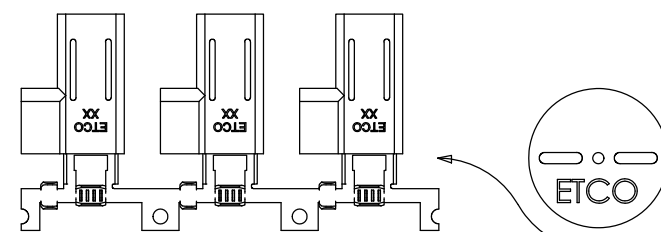
- MAT'L: .016 THK, BRASS,  
#4 TEMPER (FULL HARD)  
PRE-ELECTRO SILVER PLATE: .000120 MIN THK.  
OVER NICKEL: .000050 MIN THK.  
PER ETCO METAL CODE 3-6023.
- ACCEPTED MALE TAB: .032 X .250
- WIRE RANGE: 22-18 AWG
- INSULATION DIAMETER RANGE:  $\phi$  .055-105
- INSULATOR TEMP RATING: 150°C MAX.
- INSULATOR FLAMIBILITY RATING: UL94 V-0
- VOLTAGE RATING: 600 V MAX,  
1000 V MAX if used inside a fixture or sign.
- A BLACK INK IDENTIFYING STRIPE IS TO BE APPLIED TO THE INSULATOR APPROXIMATELY AS SHOWN.

P/C	DESCRIPTION	TERMINAL MAT'L	TERMINAL FINISH	INSULATOR MAT'L
30163	PDF225-FR-SHB	BRASS	PRE-SILVER PLATE	6/6 NYLON FR

Rev.	Description of Change/ SCN#	Date
-	INITIAL RELEASE SCJ	6/22/22
1	Updated dwg to include black stripe with note SCJ	11/22/22
2	Added section views SCJ	12/08/22



DIRECTION EXITING TOOL,  
RIGHT TO LEFT, EARS UP TO THE BACK



DIRECTION TOWARD APPLICATOR  
RIGHT TO LEFT, EARS UP, TO THE FRONT

THIS PRINT IS THE PROPERTY OF ETCO INCORPORATED. NO PART OF THIS DESIGN MAY BE USED IN ANY WAY WITHOUT WRITTEN CONSENT FROM ETCO INCORPORATED.

# UNCONTROLLED COPY

<p>THIRD ANGLE PROJECTION TOLERANCES UNLESS OTHERWISE SPECIFIED INCHES: .XX - ±.030 .XXX - ±.015 ANGLES: ±5°</p>	<p>TOOL NO. <b>0599</b></p>	<p>Title: <b>1/4" FLAG DISCONNECT ASSEMBLY</b></p>		
		<p>DO NOT SCALE DWG.</p>	<p>Drawn By: <b>S.Johnson</b></p>	<p>Date: <b>06/22/22</b></p>
<p>ETCO Incorporated Engineered Products 25 Bellows Street Warwick, RI 02888 Phone: (401) 467-2400 Fax: (401) 467-9230 www.ETCO.com</p>		<p>Chk'd/App'd By:</p>	<p>Scale: <b>4X</b></p>	<p>Size <b>B</b></p>
<p>Dwg. No.: <b>PDF225-SHB cust</b></p>				