
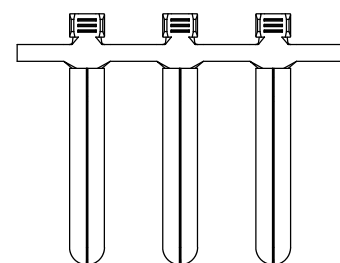
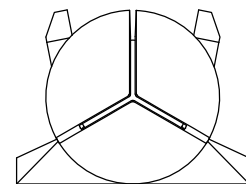
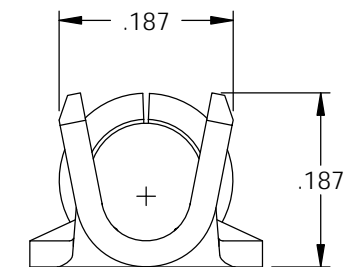
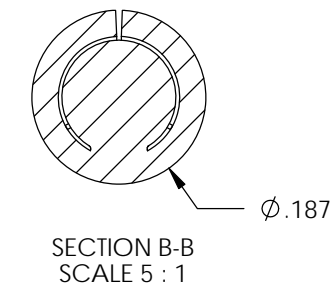
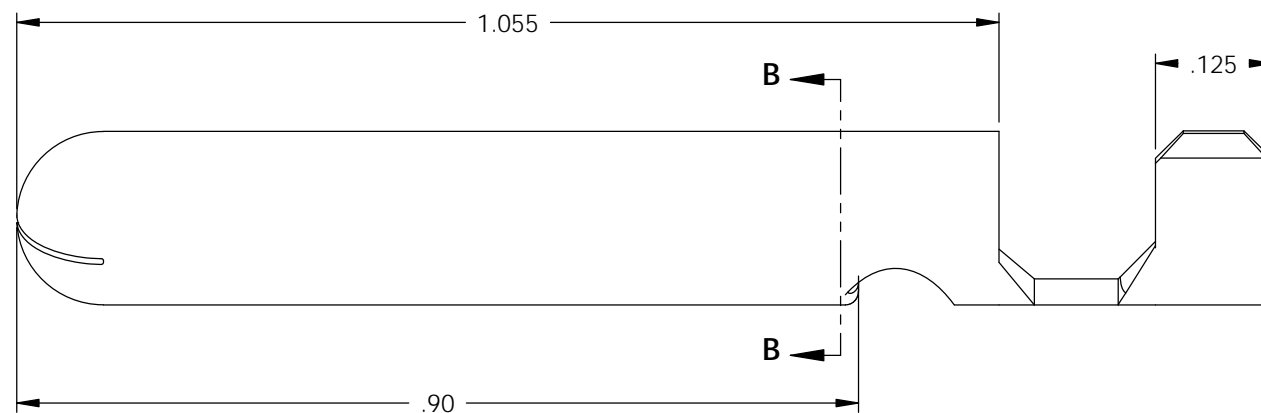
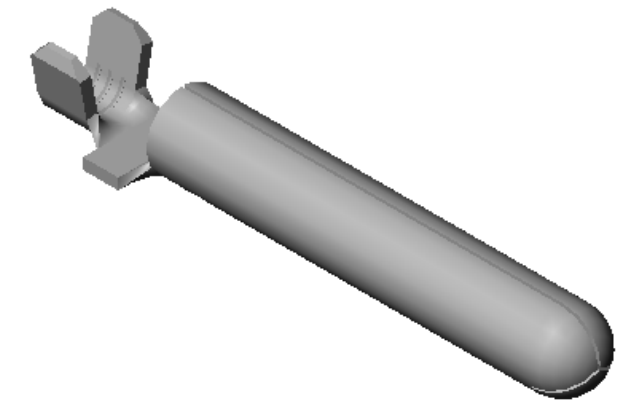
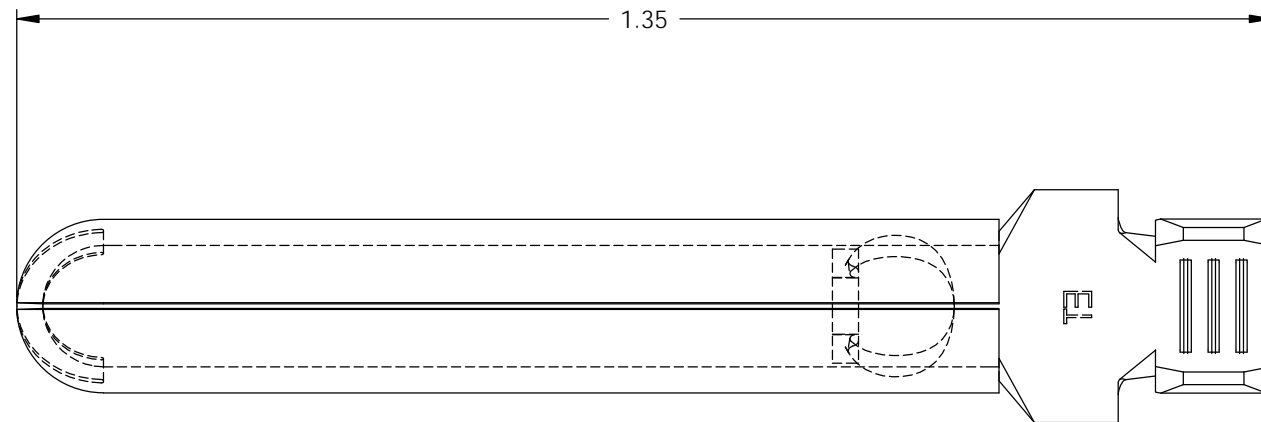


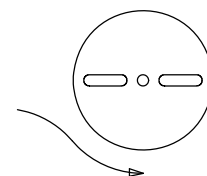
- NOTE:
- 1.) .028 THK., BRASS, HALF HARD, ANNEALED TO TEMPER, PER ETCO METAL CODE NO. 00086.
 - 2.) .028 THK., PRE-TINNED BRASS, HALF HARD, ANNEALED TO TEMPER, PER ETCO METAL CODE NO. 00088.
 - 3.) FOR REWIND INSTRUCTIONS SEE WI-09-10-8.
 - 4.) PARTS MAY BE COATED WITH A LIGHT FILM OF LUBRICATION USED IN THE MANUFACTURING PROCESS.
 - 5.) WIRE RANGE: 12-16 AWG.

P/C	DESCRIPTION (4)	REWIND	MAT'L	
09269	PN187H-CRA-HB	YES	NOTE 1	X
09273	PN187H-C-HB	NO	NOTE 1	X
14368	PN187H-C-THB	NO	NOTE 2	X

Rev.	Description of Change/ SCN#	Date
1	TRANSFER FROM CP TO EP SCJ	3-24-04
2	SCN# 102879 SCJ	3-9-05
3	SCN# 102918 SCJ	4-4-05
4	ECR# 816 SCJ	11-2-11

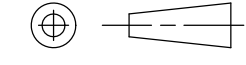



DIRECTION EXITING TOOL,
EARS UP, TO THE BACK
SEE NOTE 3



THIS PRINT IS THE PROPERTY OF ETCO INCORPORATED. NO PART OF THIS DESIGN MAY BE USED IN ANY WAY WITHOUT WRITTEN CONSENT FROM ETCO INCORPORATED.

UNCONTROLLED COPY

 THIRD ANGLE PROJECTION	TOOL NO. 0860	Title: ϕ .187 GROUND PIN		
	TOLERANCES UNLESS OTHERWISE SPECIFIED INCHES: .XX - \pm .030 .XXX - \pm .015 ANGLES - \pm 5°		DO NOT SCALE DWG.	Drawn By: S.JOHNSON Chk'd/App'd By:
		Dwg. No.: PN187H		

ETCO Incorporated
 Engineered Products
 25 Bellows Street
 Warwick, R.I. 02888
 Phone: (401)467-2400
 FAX: (401)467-9230
 www.ETCO.com