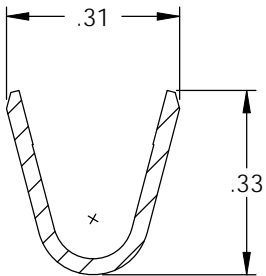
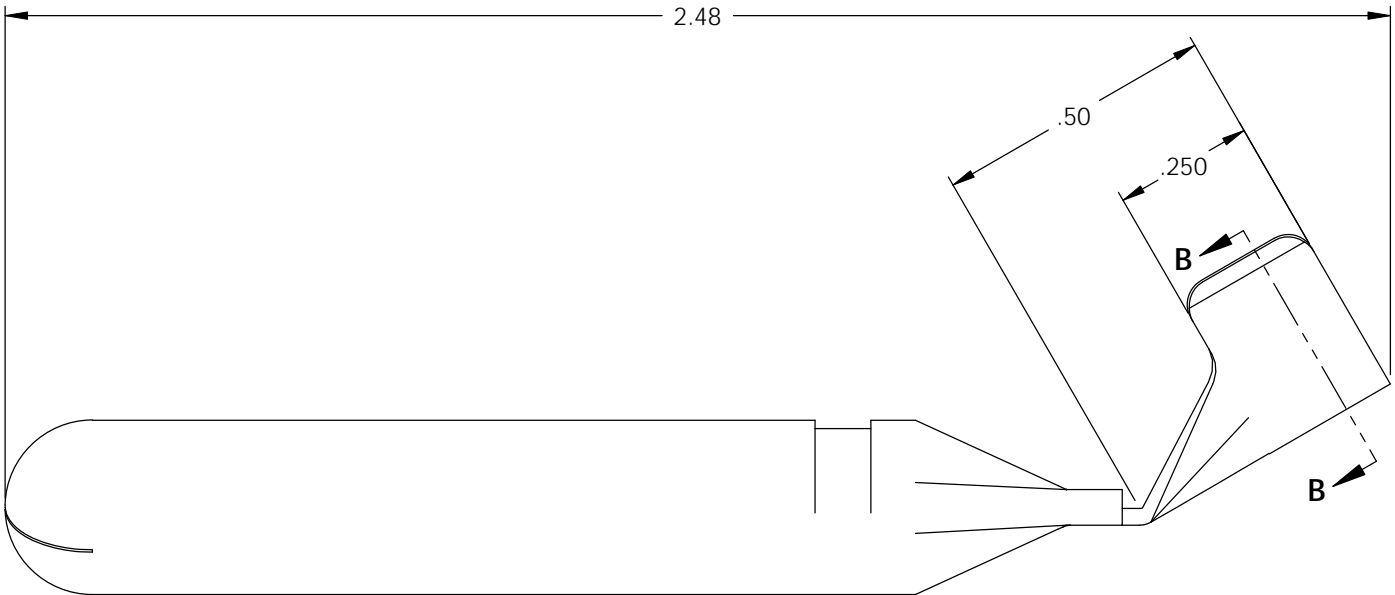
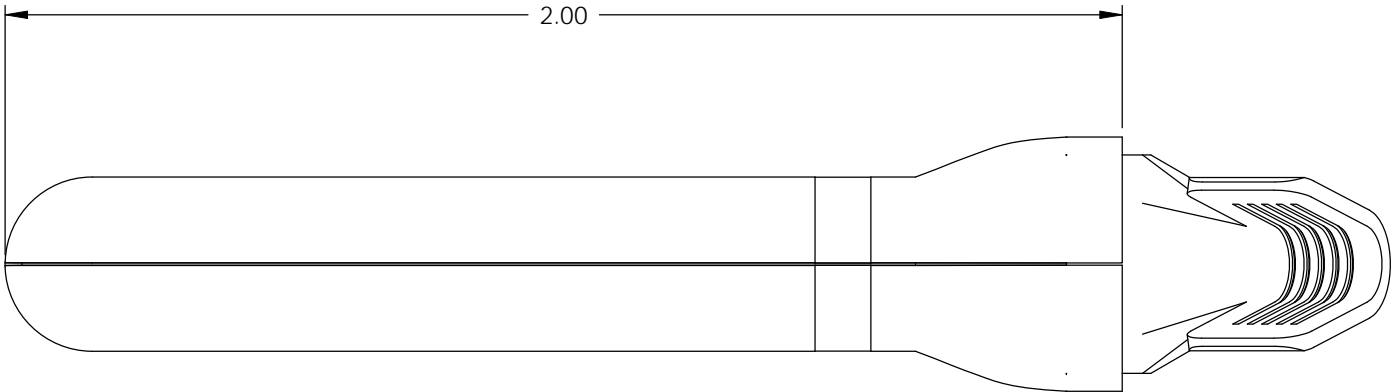
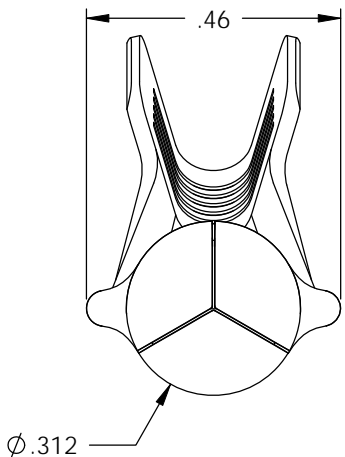
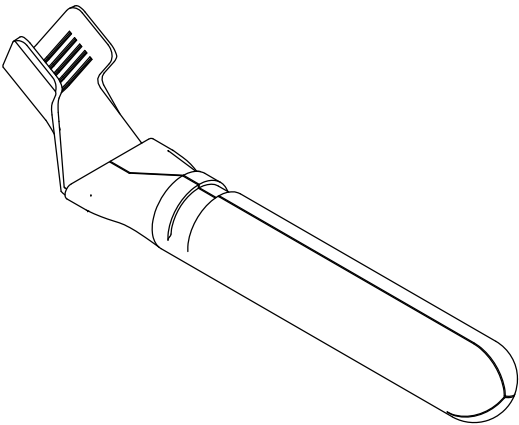


NOTE:  
1.) MAT'L: .030 THK., BRASS,  
#2 TEMPER (HALF HARD), ANNEALED TO TEMPER,  
PER ETCO METAL NO. 00103.  
2.) PART IS BENT IN APPLICATOR AS SHOWN.  
3.) PARTS MAY BE COATED WITH A LIGHT FILM OF  
LUBRICATION USED IN THE MANUFACTURING  
PROCESS.  
4.) WIRE RANGE: 6-10 AWG.





SECTION B-B  
SCALE 3 : 1

P/C	DESCRIPTION	MAT'L
82032	PNGRD106-HB	NOTE 1

Rev.	Description of Change/ SCN#	Date
1	TRANSFERED FROM CP SCJ	8-27-08

# UNCONTROLLED COPY

 THIRD ANGLE PROJECTION TOLERANCES UNLESS OTHERWISE SPECIFIED INCHES: .XX - ±.030 XXX - ±.015 ANGLES: ±5°	TOOL NO. <b>0867</b>		Title: Ø.312 GROUND PIN - LOOSE PIECE		
		ETCO Incorporated Engineered Products 25 Bellows Street Warwick, RI 02888 Phone: (401) 467-2400 Fax: (401) 467-9230 www.ETCO.com	DO NOT SCALE DWG.		Drawn By: S.JOHNSON
			Chk'd/App'd By:		Date: XX/XX/XXXX
			Dwg. No.: PNGRD106 - Loose piece cust		Scale: 3X Size B