
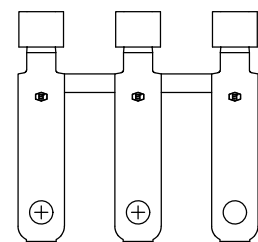
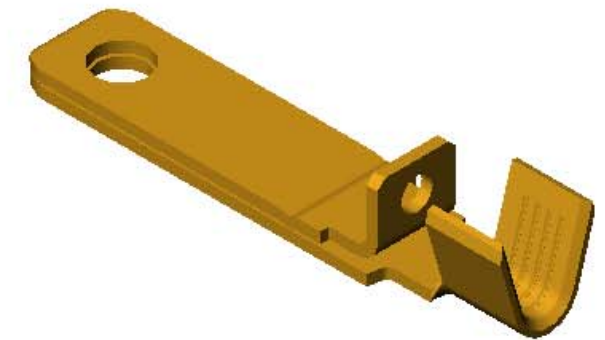
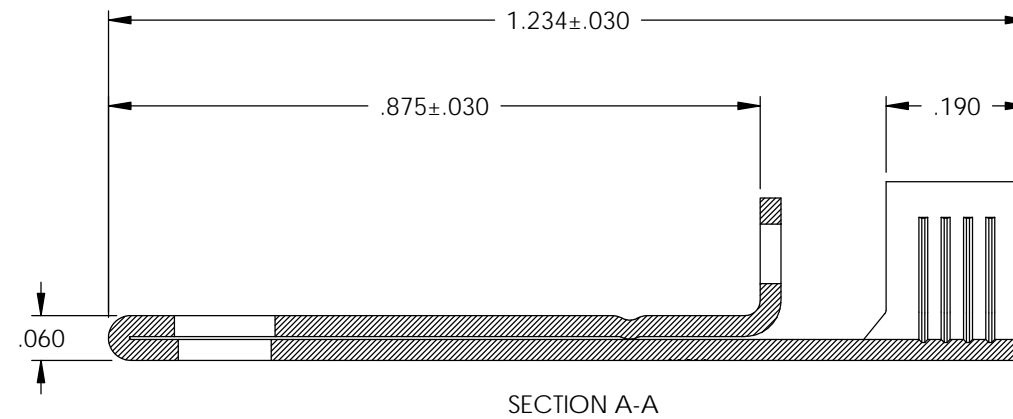
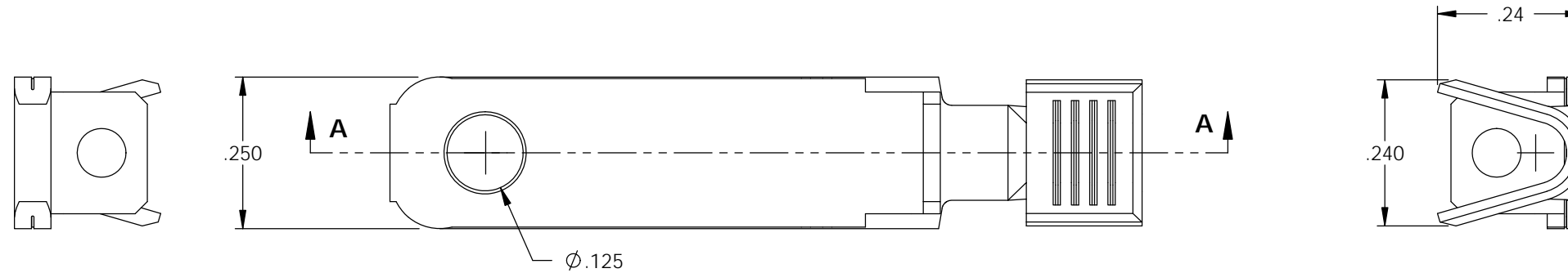


NOTES:

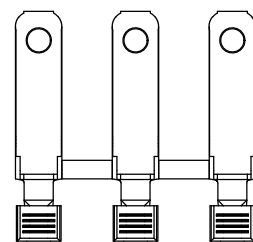
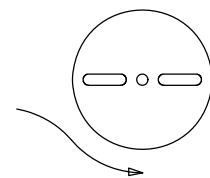
1. MATERIAL: .028 THICK C26000 BRASS; 1/2 HARD  
ANNEALED TO TEMPER  
PER ETCO METAL CODE 00746.
  2. PARTS MAY BE COATED WITH A LIGHT FILM OF LUBRICATION USED  
IN THE MANUFACTURING PROCESS.
- 3D4@Sketch5@PP1F2cust.SLDDRW. WIRE RANGE: # 10-#12 AWG.

P/C	DESCRIPTION (2)	MAT'L	
14216	PP1F2-A-HB	NOTE 1	X

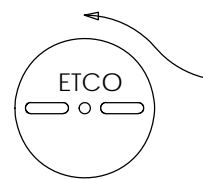
Rev.	Description of Change/ SCN#	Date
1	TRANSFER FROM CP TO EP	10-29-04
2	ECR# 816 SCJ	11-3-11



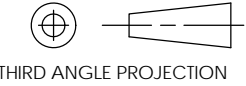

DIRECTION EXITING TOOL  
EARS DOWN, TO THE REAR



DIRECTION TOWARDS APPLICATOR  
EARS UP, TO THE FRONT



# UNCONTROLLED COPY

 THIRD ANGLE PROJECTION  TOLERANCES UNLESS OTHERWISE SPECIFIED INCHES: .XX - ±.030 .XXX - ±.015  ANGLES - ±5°	TOOL NO. <b>0851</b>	Title: <b>NON-POLARIZED SPACE BLADE</b>		
		ETCO Incorporated Engineered Products 25 Bellows Street Warwick, R.I. 02888 Phone: (401)467-2400 FAX: (401)467-9230 www.ETCO.com	DO NOT SCALE DWG.  Drawn By: S.JOHNSON Chk'd/App'd By:	Date: 10-29-04  Scale: 4X Size <b>B</b>
		Dwg. No.: <b>PP1F2</b>		