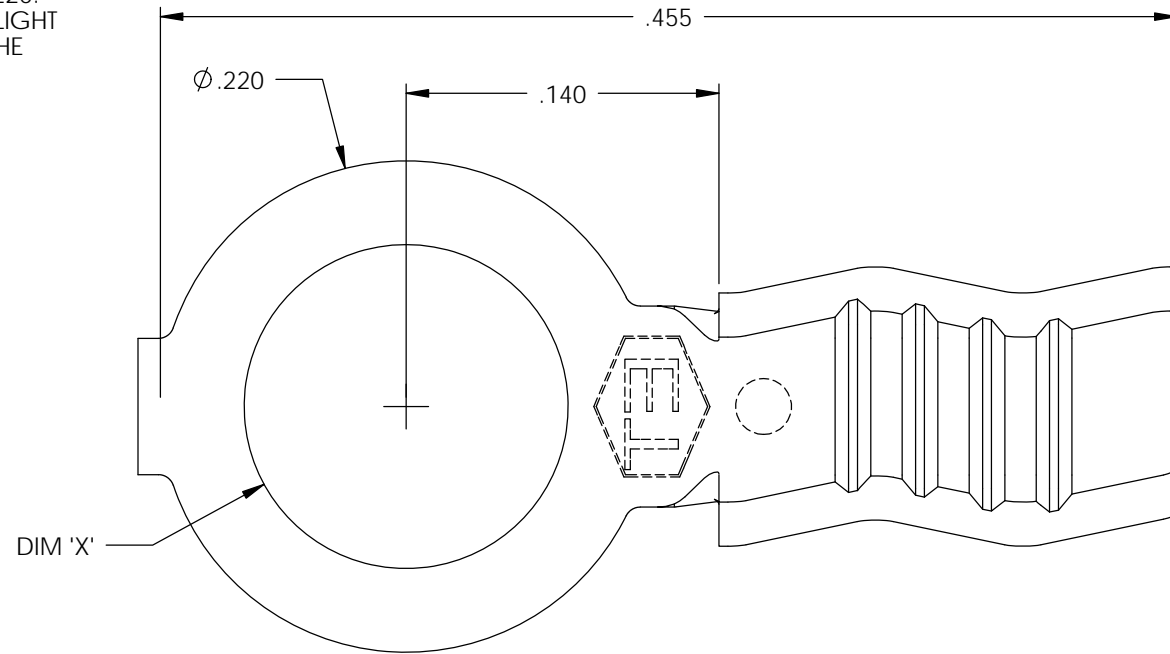
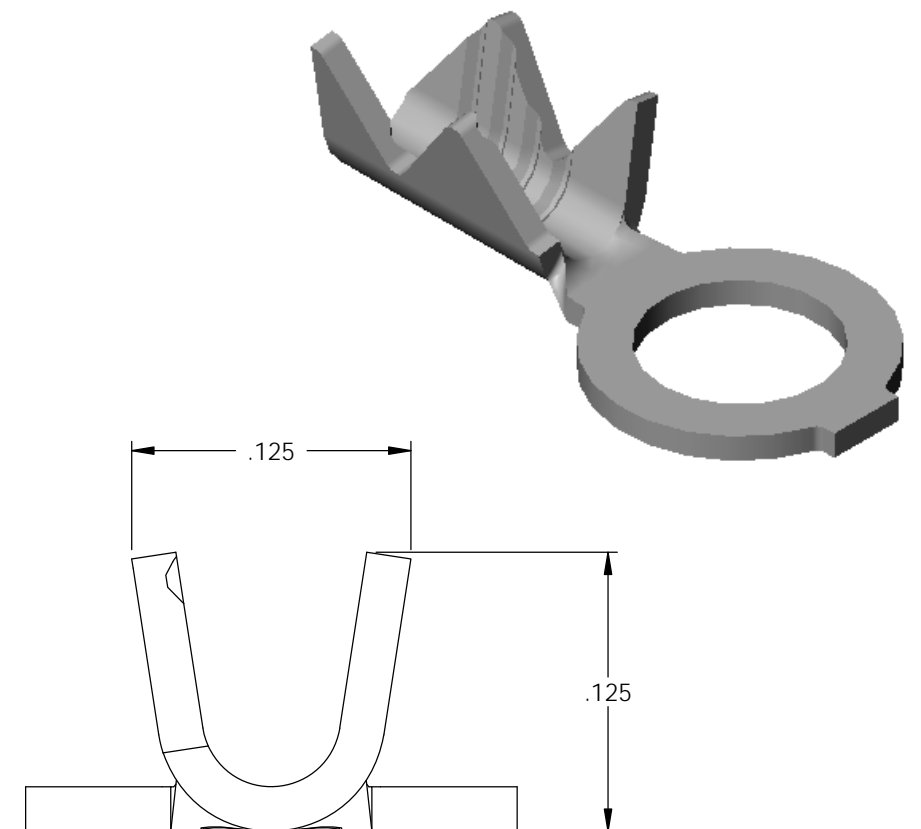
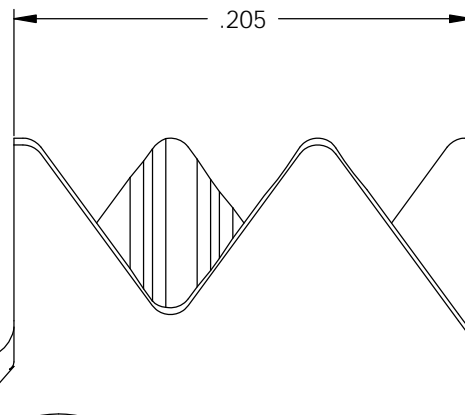


NOTE:

- 1.) MAT'L: .020 THK., BRASS, #2 TEMPER (HALF HARD), PER ETCO METAL CODE NO. 00310.
- 2.) MAT'L: .020 THK., PRE-TINNED BRASS, #2 TEMPER (HALF HARD), PER ETCO METAL CODE NO. 01390.
- 3.) MAT'L: .020 THK., PRE-NICKEL PLATED STEEL, #3 TEMPER (QUARTER HARD), PER ETCO METAL CODE NO. 03220.
- 4.) PARTS MAY BE COATED WITH A LIGHT FILM OF LUBRICATION USED IN THE MANUFACTURING PROCESS.
- 5.) WIRE RANGE: 22-18 AWG.

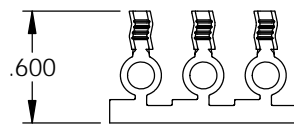


DIM 'X'

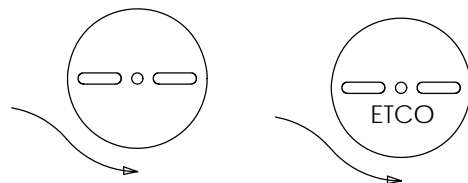


P/C	DESCRIPTION	DIM 'X'	MAT'L		
00070	R15-2-HB	Ø.093	NOTE 1	X	X
00080	R15-2-THB	Ø.093	NOTE 2	X	X
00091	R15-4-HB	Ø.119	NOTE 1	X	X
00100	R15-4-THB	Ø.119	NOTE 2	X	X
00103	R15-4-NPS	Ø.119	NOTE 3		
00104	R15-125-HB	Ø.125	NOTE 1		
00106	R15-125-THB	Ø.125	NOTE 2		
00111	R15-6-HB	Ø.145	NOTE 1	X	X
00120	R15-6-THB	Ø.145	NOTE 2	X	X
00125	R15-6-NPS	Ø.145	NOTE 3		

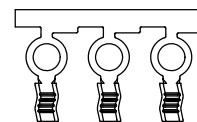
Rev.	Description of Change/ SCN#	Date
1	REDRAWN ON SOLIDWORKS NO CHANGES SCJ ORG.ENG.DWG.DATE: 4-4-64	1-15-03
2	ADDED P/Cs SCN# 140162 SCJ	9-19-07



DIRECTION EXITING TOOL,
EARS UP, TO THE BACK



DIRECTION TOWARD APPLICATOR,
EARS UP, TO THE FRONT



THIS PRINT IS THE PROPERTY OF ETCO INCORPORATED. NO PART OF THIS DESIGN MAY BE USED IN ANY WAY WITHOUT WRITTEN CONSENT FROM ETCO INCORPORATED.

UNCONTROLLED COPY

 THIRD ANGLE PROJECTION TOLERANCES UNLESS OTHERWISE SPECIFIED INCHES: .XX - ±.030 .XXX - ±.015 ANGLES: ±5°	TOOL NO. 0734	Title: RING TERMINAL		
		DO NOT SCALE DWG.	Drawn By: S.JOHNSON	Date: 1-15-03
ETCO Incorporated Engineered Products 25 Bellows Street Warwick, RI 02888 Phone: (401) 467-2400 Fax: (401) 467-9230 www.ETCO.com		Chk'd/App'd By:	Scale: 12X	Size B
		Dwg. No.: R15 cust		