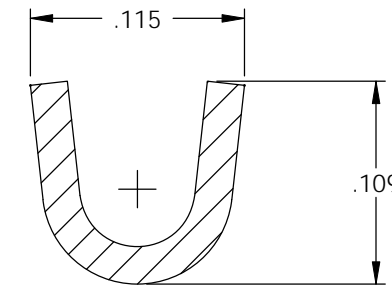
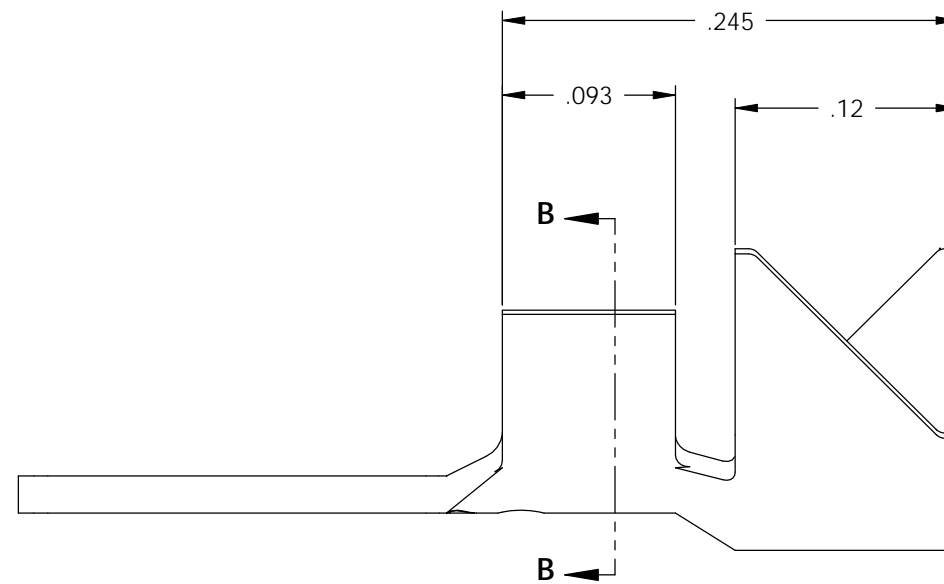
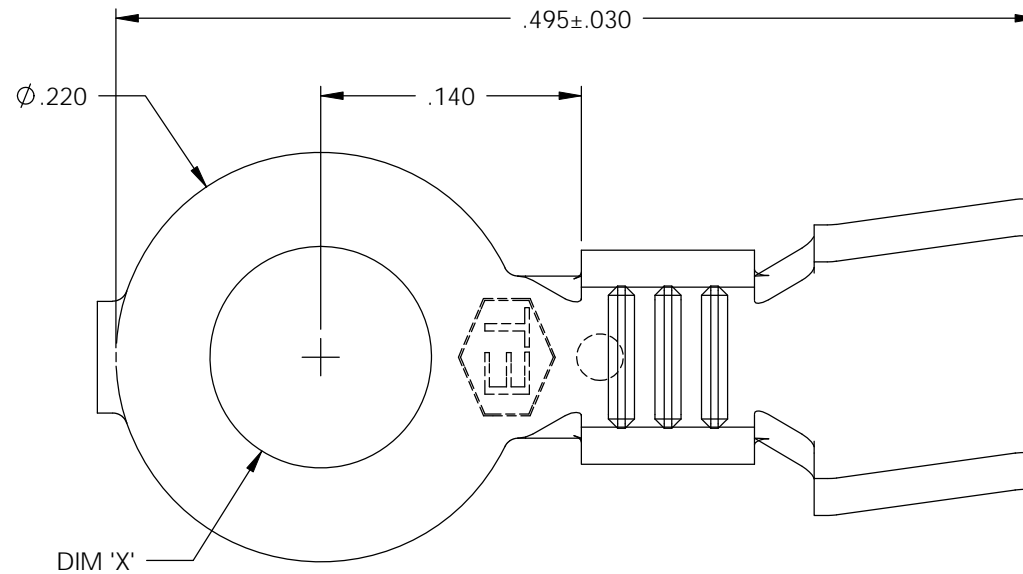
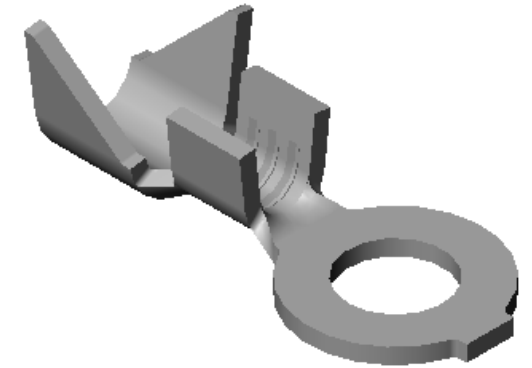
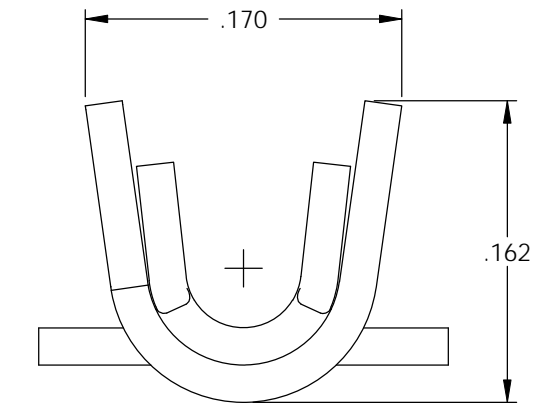


NOTE:

- 1.) MAT'L: .020 THK., BRASS, #2 TEMPER (HALF HARD), PER ETCO METAL CODE NO. 00330.
- 2.) MAT'L: .020 THK., PRE-TINNED BRASS, #2 TEMPER (HALF HARD), PER ETCO METAL CODE NO. 01410.
- 3.) MAT'L: .020 THK., PRE-NICKEL PLATED STEEL, #3 TEMPER (QUARTER HARD), PER ETCO METAL CODE NO. 03230.
- 4.) PARTS MAY BE COATED WITH A LIGHT FILM OF LUBRICATION USE IN THE MANUFACTURING PROCESS.
- 5.) WIRE RANGE: 24-20 AWG.
- 6.) INSUL RANGE: ϕ .060-.075

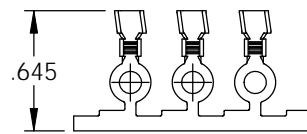


SECTION B-B
SCALE 10 : 1

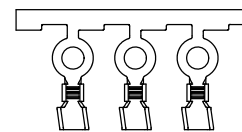
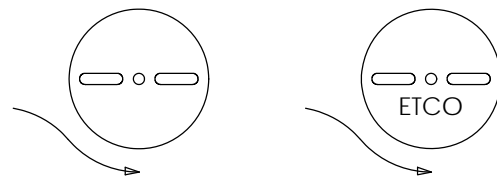


| P/C | DESCRIPTION | DIM 'X' | MAT'L | UL | CSA |
|-------|-------------|-------------|--------|----|-----|
| 00128 | R16-066-HB | ϕ .066 | NOTE 1 | | |
| 00130 | R16-099-HB | ϕ .099 | NOTE 1 | | |
| 00134 | R16-2-HB | ϕ .093 | NOTE 1 | X | X |
| 00135 | R16-2-THB | ϕ .093 | NOTE 2 | X | X |
| 00138 | R16-2-NPS | ϕ .093 | NOTE 3 | | |
| 00145 | R16-125-HB | ϕ .125 | NOTE 1 | | |
| 00150 | R16-4-HB | ϕ .119 | NOTE 1 | X | X |
| 00160 | R16-4-THB | ϕ .119 | NOTE 2 | X | X |
| 00165 | R16-4-NPS | ϕ .119 | NOTE 3 | | |
| 00170 | R16-6-HB | ϕ .145 | NOTE 1 | X | X |
| 00180 | R16-6-THB | ϕ .145 | NOTE 2 | X | X |

| Rev. | Description of Change/ SCN# | Date |
|------|---|----------|
| 1 | SCN# 102077 SCJ ORG.ENG.DWG.DATE: 9-1-92 | 11-26-02 |
| 2 | SCN# 102135 SCJ | 3-27-03 |
| 3 | ACTIVATED P/C 00134 SCJ | 4-24-03 |
| 4 | ADDED "ALL" P/C'S SCN# 140162 SCJ | 6-14-07 |



DIRECTION EXITING TOOL,
EARS UP, CARRIER TO THE FRONT



DIRECTION TOARD APPLICATOR,
EARS UP, CARRIER TO THE BACK

THIS PRINT IS THE PROPERTY OF ETCO INCORPORATED. NO PART OF THIS DESIGN MAY BE USED IN ANY WAY WITHOUT WRITTEN CONSENT FROM ETCO INCORPORATED.

UNCONTROLLED COPY

| | | | | |
|---|---------------------------------|------------------------------------|----------------------------|--------------------------|
| <p>THIRD ANGLE PROJECTION TOLERANCES UNLESS OTHERWISE SPECIFIED INCHES: .XX - \pm.030 .XXX - \pm.015 ANGLES: \pm5°</p> | <p>TOOL NO. 0005</p> | <p>Title: RING TERMINAL</p> | | |
| | | <p>DO NOT SCALE DWG.</p> | <p>Drawn By: S.JOHNSON</p> | <p>Date: 11-26-02</p> |
| <p>ETCO Incorporated Engineered Products 25 Bellows Street Warwick, RI 02888 Phone: (401) 467-2400 Fax: (401) 467-9230 www.ETCO.com</p> | | <p>Chk'd/App'd By:</p> | <p>Scale: 10X</p> | <p>Size B</p> |
| | | <p>Dwg. No.: R16 cust</p> | | |