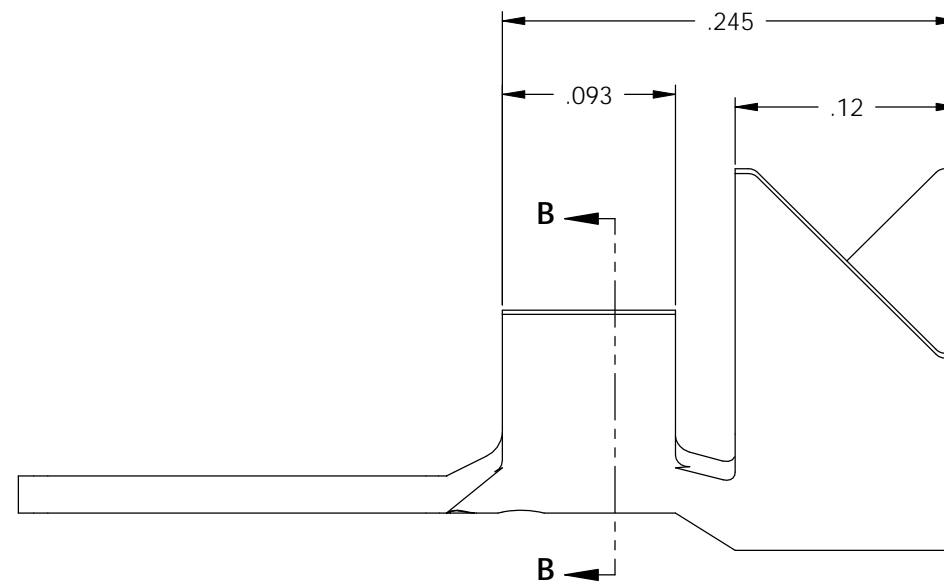
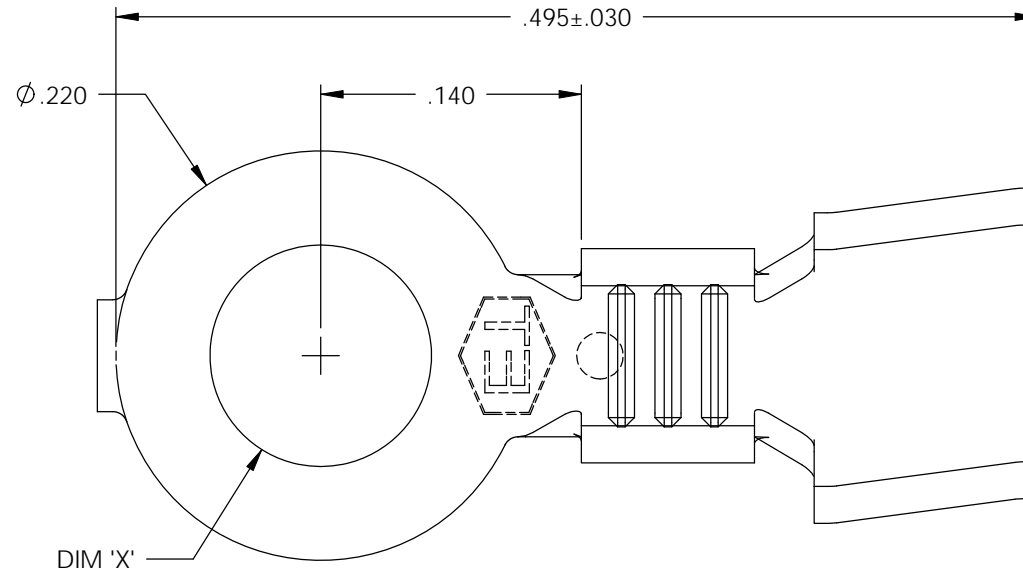


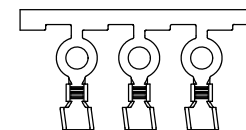
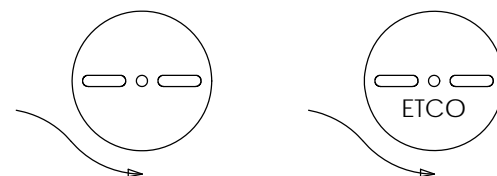
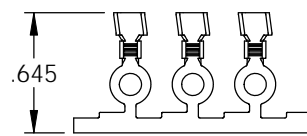
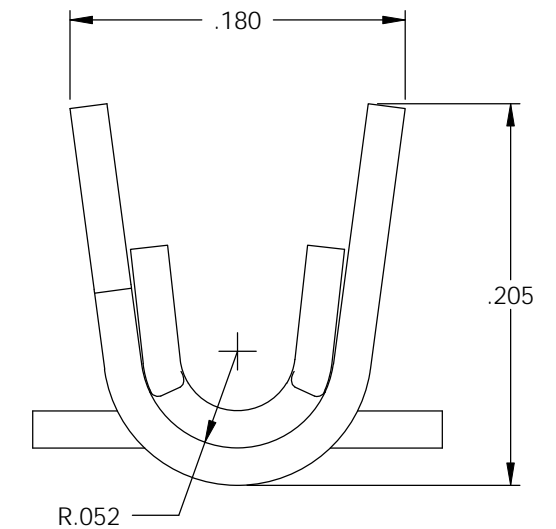
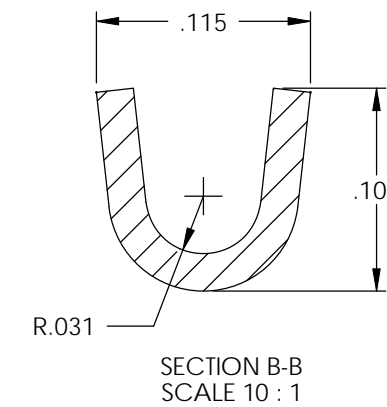
NOTE:

- 1.) MAT'L: .020 THK., BRASS, #2 TEMPER (HALF HARD), PER ETCO METAL CODE NO. 00330.
- 2.) MAT'L: .020 THK., PRE-TINNED BRASS, #2 TEMPER (HALF HARD), PER ETCO METAL CODE NO. 01410.
- 3.) PARTS MAY BE COATED WITH A LIGHT FILM OF LUBRICATION USE IN THE MANUFACTURING PROCESS.
- 4.) WIRE RANGE: 24-20 AWG.
- 5.) INSUL RANGE: ϕ .095-.115



P/C	DESCRIPTION	DIM 'X'	MAT'L	UL	CSA
00163	R16S-125-HB	ϕ .125	NOTE 1		
00179	R16S-2-HB	ϕ .093	NOTE 1	X	X
00181	R16S-6-HB	ϕ .145	NOTE 1	X	X
00182	R16S-2-THB	ϕ .093	NOTE 2	X	X
00183	R16S-4-THB	ϕ .119	NOTE 2	X	X
00185	R16S-6-THB	ϕ .145	NOTE 2	X	X
00188	R16S-4-HB	ϕ .119	NOTE 1	X	X

Rev.	Description of Change/ SCN#	Date
1	SCN# 102077 SCJ ORG.ENG.DWG.DATE: 9-1-92	11-26-02
2	SCN# 102135 SCJ	3-27-03
3	ADDED "ALL" P/C'S SCN# 140162 SCJ	6-14-07
4	SCN# 140267 SCJ	10-24-07



DIRECTION EXITING TOOL,
EARS UP, CARRIER TO THE FRONT

DIRECTION TOARD APPLICATOR,
EARS UP, CARRIER TO THE BACK

THIS PRINT IS THE PROPERTY OF ETCO INCORPORATED. NO PART OF THIS DESIGN MAY BE USED IN ANY WAY WITHOUT WRITTEN CONSENT FROM ETCO INCORPORATED.

UNCONTROLLED COPY

<p>THIRD ANGLE PROJECTION TOLERANCES UNLESS OTHERWISE SPECIFIED INCHES: .XX - \pm.030 .XXX - \pm.015 ANGLES: \pm5°</p>	<p>TOOL NO. 0005</p>	<p>Title: RING TERMINAL</p>		
	<p>DO NOT SCALE DWG.</p>	<p>Drawn By: S.JOHNSON</p>	<p>Date: 11-26-02</p>	
	<p>ETCO Incorporated Engineered Products 25 Bellows Street Warwick, RI 02888 Phone: (401) 467-2400 Fax: (401) 467-9230 www.ETCO.com</p>	<p>Chk'd/App'd By:</p>	<p>Scale: 10X</p>	<p>Size B</p>
		<p>Dwg. No.:</p>	<p>R16S cust</p>	