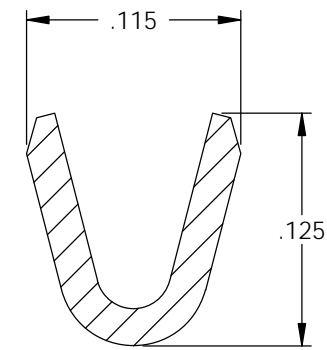
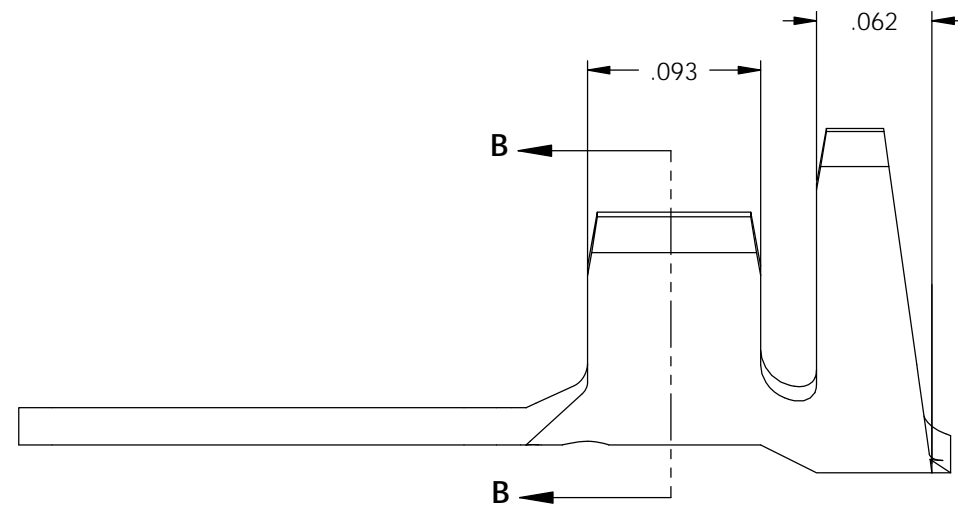
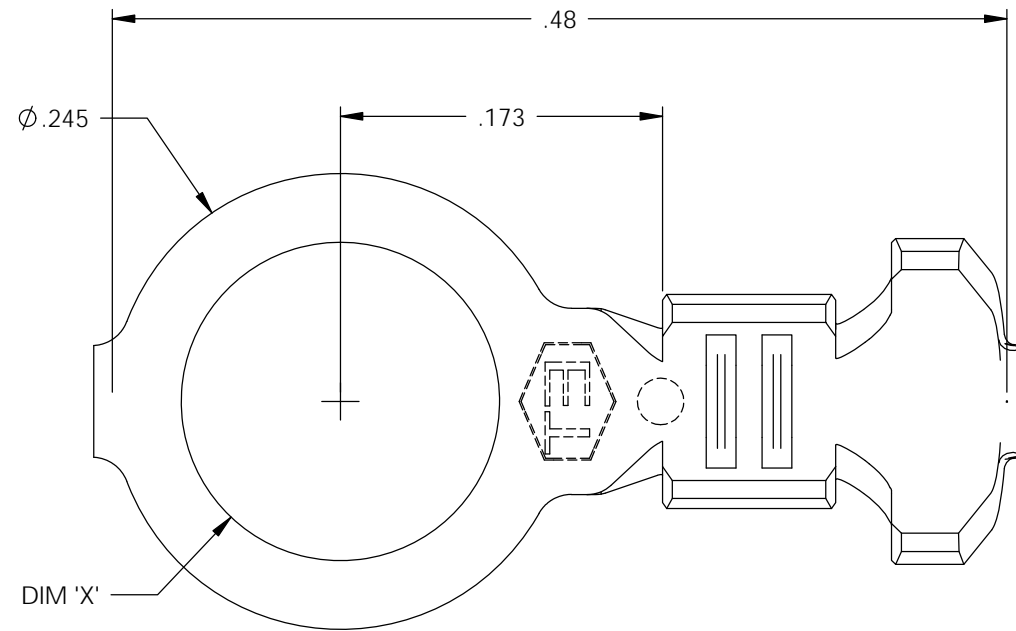
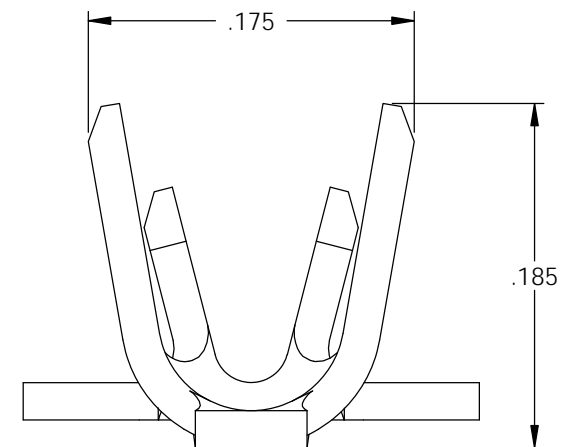


NOTE:

- 1.) MAT'L: .020 THK., BRASS, HALF HARD, ANNEALED TO TEMPER, PER ETCO METAL CODE NO. 00250.
- 2.) MAT'L: .020 THK., PRE-TINNED BRASS, HALF HARD, ANNEALED TO TEMPER, PER ETCO METAL CODE NO. 01315.
- 3.) MAT'L: .020 THK., ALUMINUM ALLOY 5052, H32 TEMPER, PER ETCO METAL CODE NO. 03711.
- 4.) PARTS MAY BE COATED WITH A LIGHT FILM OF LUBRICATION USED IN THE MANUFACTURING PROCESS.
- 5.) WIRE RANGE: 20-18 AWG.
- 6.) INSUL RANGE: ϕ .075-.122

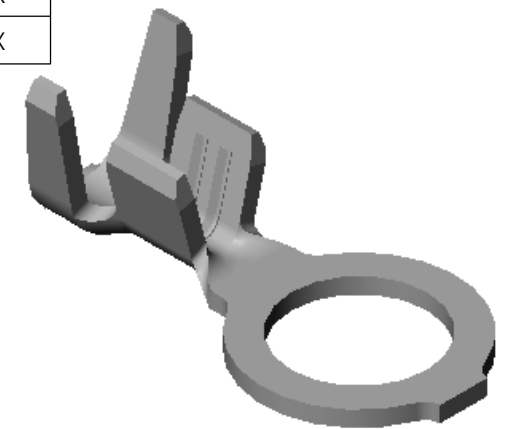


SECTION B-B
SCALE 10 : 1

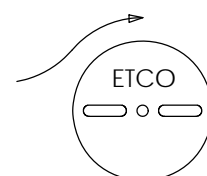
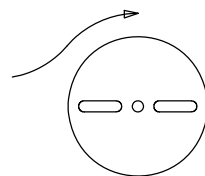


| P/C | DESCRIPTION | DIM 'X' | MAT'L | UL | SP |
|-------|-------------|-------------|--------|----|----|
| 00336 | R22E-2-HB | ϕ .093 | NOTE 1 | | |
| 00337 | R22E-2-THB | ϕ .093 | NOTE 2 | | |
| 00338 | R22E-6-AL | ϕ .145 | NOTE 3 | | |
| 00351 | R22E-6-HB | ϕ .145 | NOTE 1 | X | X |
| 00352 | R22E-4-HB | ϕ .119 | NOTE 1 | X | X |
| 00354 | R22E-4-THB | ϕ .119 | NOTE 2 | X | X |
| 00355 | R22E-8-HB | ϕ .171 | NOTE 1 | X | X |
| 00356 | R22E-6-THB | ϕ .145 | NOTE 2 | X | X |
| 00357 | R22E-8-THB | ϕ .171 | NOTE 2 | X | X |

| Rev. | Description of Change/ SCN# | Date |
|------|--|---------|
| 1 | REDRAWN ON SOLIDWORKS NO CHANGE SCJ ORG.ENG.DWG.DATE: 12-22-92 | 1-16-03 |
| 2 | SCN# 102884 SCJ | 3-9-05 |
| 3 | SCN# 102923 SCJ | 4-11-05 |
| 4 | SCN# 140043 SCJ | 8-11-06 |
| 5 | SCN# 140156 SCJ | 7-18-07 |
| 6 | ECR# 1185 SCJ | 3/8/12 |



DIRECTION EXITING TOOL,
EARS UP, TO THE LEFT



DIRECTION TOWARD APPLICATOR,
EARS UP, TO THE RIGHT



UNCONTROLLED COPY

| | | | | |
|---|---------------------------------|--|-----------------------------------|-----------------------------|
| <p>THIRD ANGLE PROJECTION TOLERANCES UNLESS OTHERWISE SPECIFIED INCHES: .XX - \pm.030 .XXX - \pm.015 ANGLES: \pm5°</p> | <p>TOOL NO. 0738</p> | <p>Title: RING TERMINAL</p> | | |
| | | <p>DO NOT SCALE DWG.</p> | <p>Drawn By: S.JOHNSON</p> | <p>Date: 1-16-03</p> |
| <p>ETCO Incorporated Engineered Products 25 Bellows Street Warwick, RI 02888 Phone: (401) 467-2400 Fax: (401) 467-9230 www.ETCO.com</p> | | <p>Chk'd/App'd By:</p> | <p>Scale: 10X</p> | <p>Size B</p> |
| | | <p>Dwg. No.: R22E cust</p> | | |