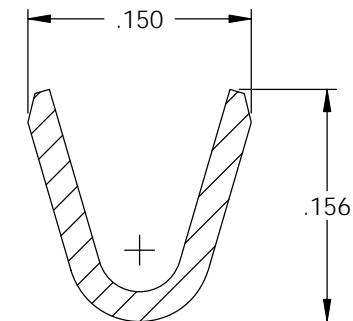
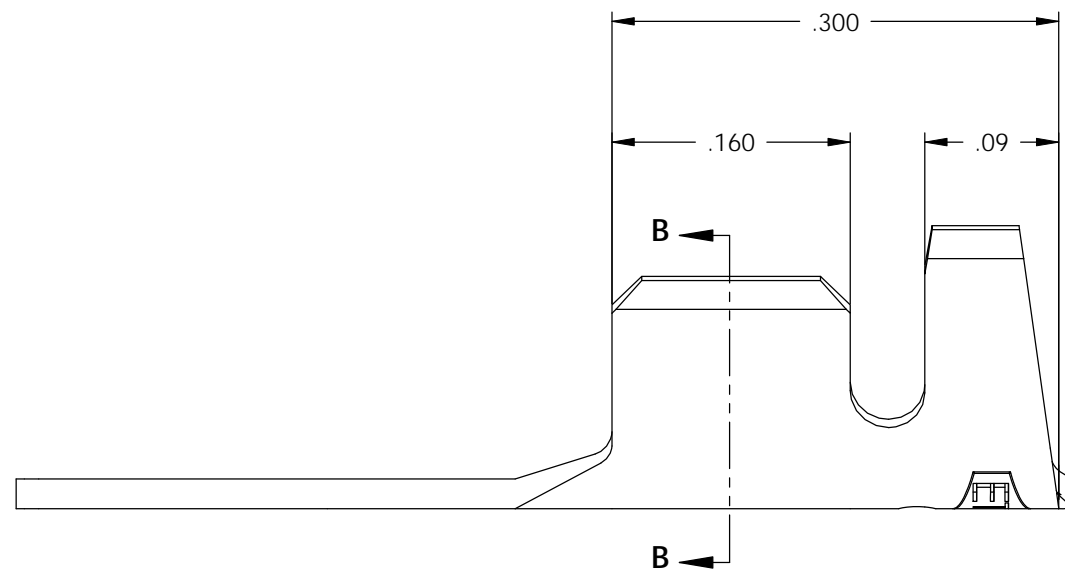
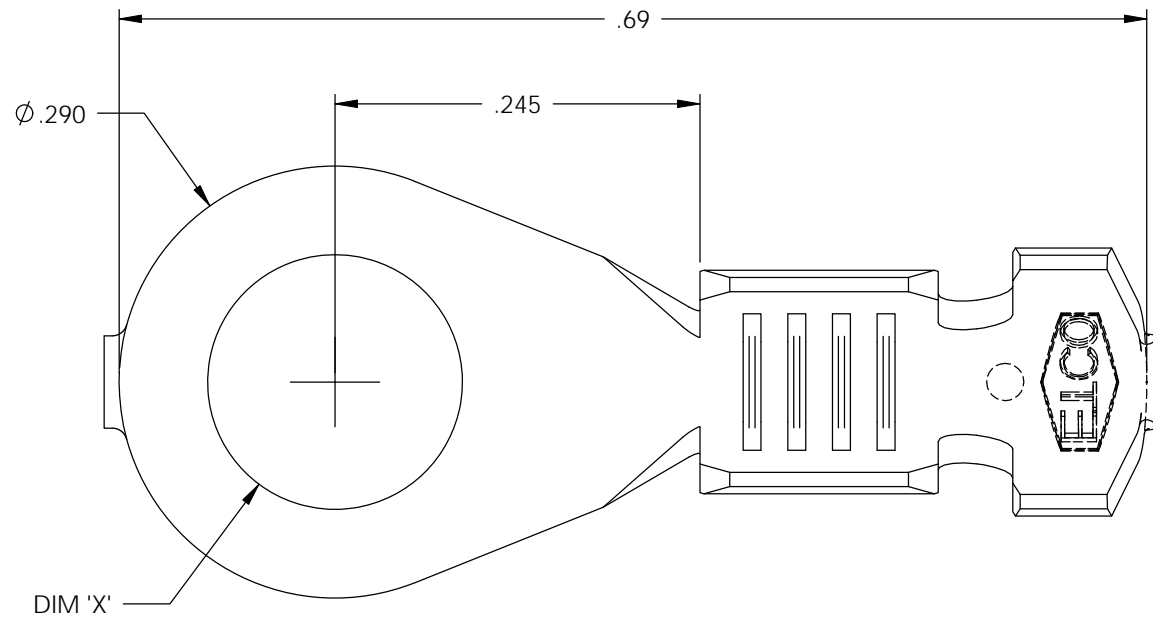
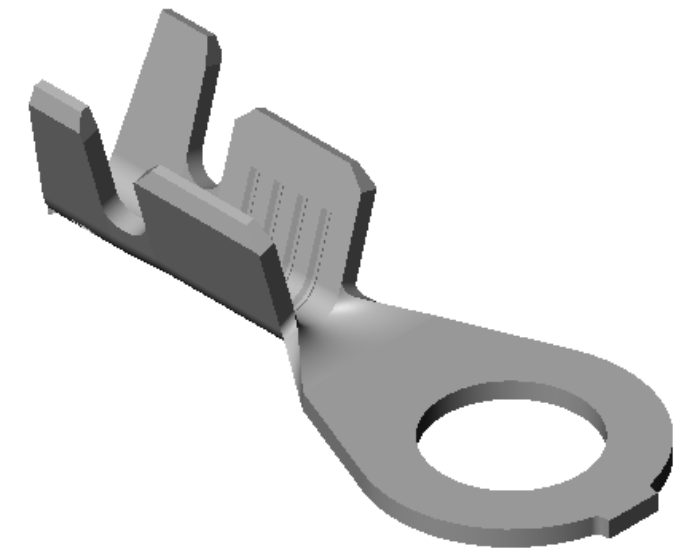
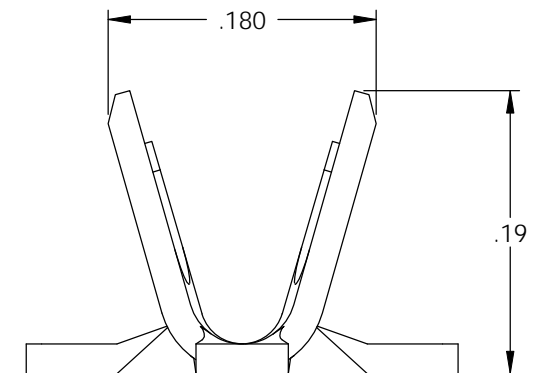


NOTE:

- 1.) MAT'L: .020 THK., BRASS, HALF HARD, ANNEALED TO TEMPER, PER ETCO METAL CODE NO. 00250.
- 2.) MAT'L: .020 PRE-TINNED BRASS, HALF HARD, ANNEALED TO TEMPER, PER ETCO METAL CODE NO 01315.
- 3.) PARTS MAY BE COATED WITH A LIGHT FILM OF LUBRICATION USED IN THE MANUFACTURING PROCESS.
- 4.) WIRE RANGE: 20-16 AWG.
- 5.) INSUL RANGE: ϕ .075-.125

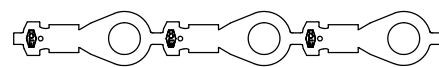


SECTION B-B
SCALE 8 : 1

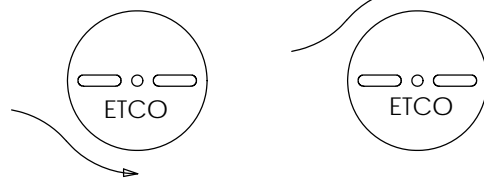


P/C	DESCRIPTION	DIM 'X'	MAT'L	UL	SP
02123	R346E-6-HB	ϕ .145	NOTE 1	X	X
02124	R346E-6-THB	ϕ .145	NOTE 2	X	X
02125	R346E-8-HB	ϕ .171	NOTE 1	X	X
02126	R346E-8-THB	ϕ .171	NOTE 2	X	X
02127	R346E-10-HB	ϕ .197	NOTE 1	X	X
02128	R346E-10-THB	ϕ .197	NOTE 2	X	X

Rev.	Description of Change/ SCN#	Date
1	REDRAWN IN SOLIDWORKS NO CHANGES SCJ ORG.ENG.DWG.DATE: 3-26-92	1-7-03
2	SCN# 102887 SCJ	3-9-05
3	ADDED P/Cs SCN#140162 SCJ	8-21-07



DIRECTION EXITING TOOL,
EARS DOWN, TO THE LEFT



DIRECTION TOWARD APPLICATOR,
EARS UP, TO THE RIGHT

UNCONTROLLED COPY

<p>THIRD ANGLE PROJECTION TOLERANCES UNLESS OTHERWISE SPECIFIED INCHES: .XX - \pm.030 .XXX - \pm.015 ANGLES: \pm5°</p>	<p>TOOL NO. 0042</p>	<p>Title: RING TERMINAL</p>		
		<p>DO NOT SCALE DWG.</p>	<p>Drawn By: S.JOHNSON</p>	<p>Date: 1-7-03</p>
<p>ETCO Incorporated Engineered Products 25 Bellows Street Warwick, RI 02888 Phone: (401) 467-2400 Fax: (401) 467-9230 www.ETCO.com</p>		<p>Chk'd/App'd By:</p>	<p>Scale: 8X</p>	<p>Size B</p>
		<p>Dwg. No.: R346E cust</p>		