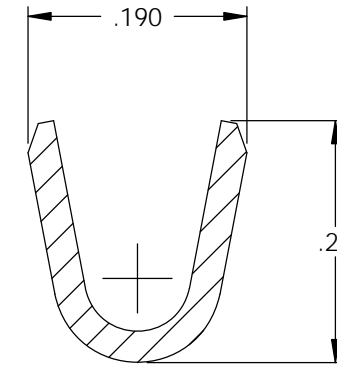
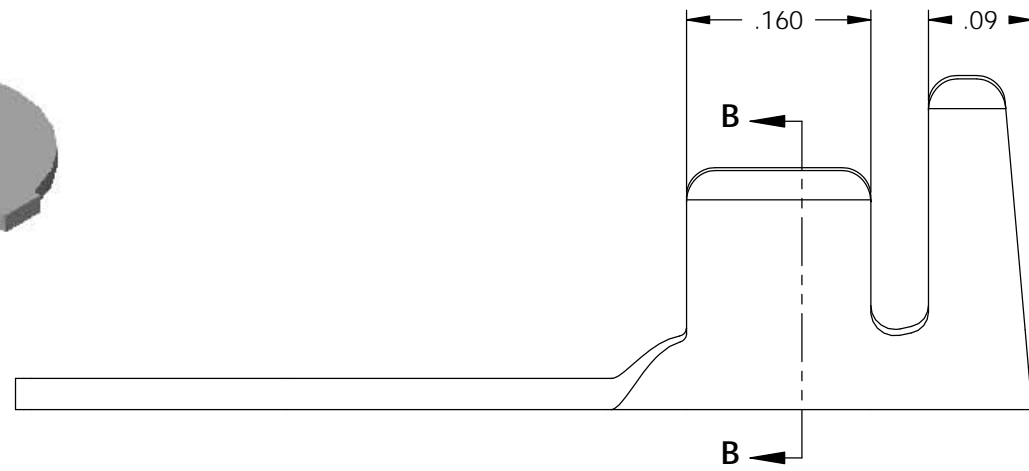
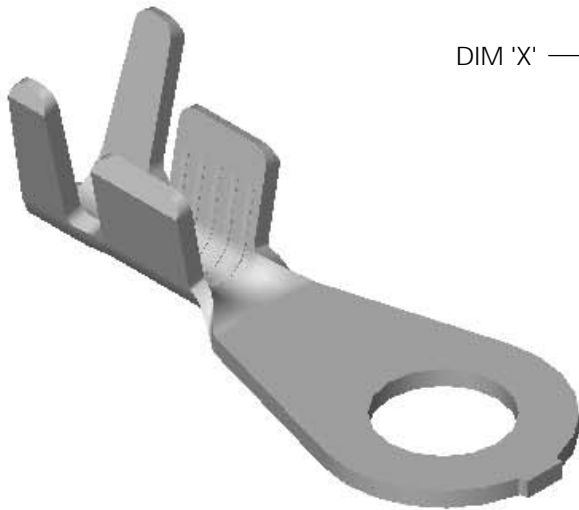
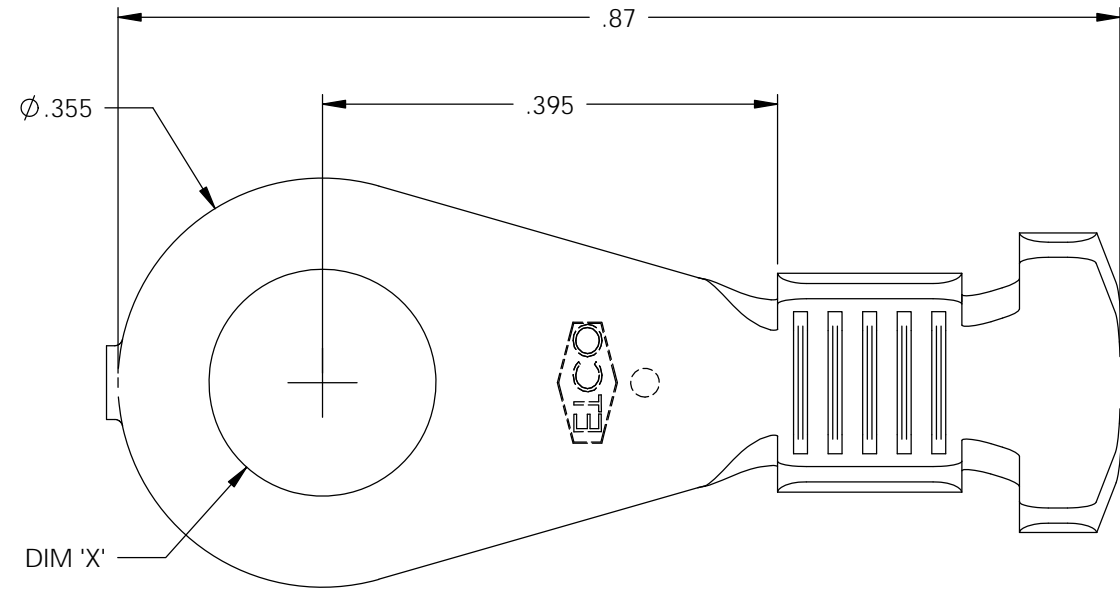
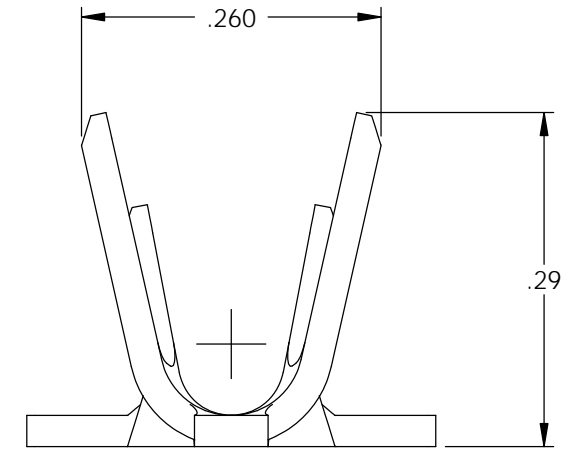


- NOTE:
 1.) MAT'L: .027 THK., BRASS, #2 TEMPER (HALF HARD), PER ETCO METAL CODE NO. 00700.
 2.) MAT'L: .027 THK., PRE-TINNED BRASS, #2 TEMPER (HALF HARD), PER ETCO METAL CODE NO. 01672.
 3.) PARTS MAY BE COATED WITH A LIGHT FILM OF LUBRICATION USED IN THE MANUFACTURING PROCESS.
 4.) WIRE RANGE: 16-12 AWG.
 5.) INSUL RANGE: ϕ .145-.180

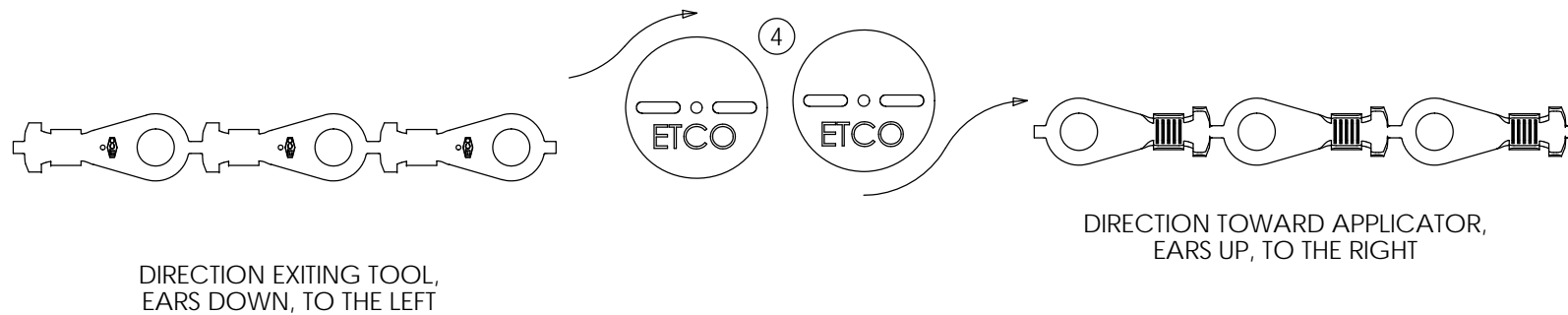


SECTION B-B



P/C	DESCRIPTION	DIM 'X'	MAT'L	UL	SP
02139	R361E-6-HB	ϕ .145	NOTE 1	X	X
02144	R361E-8-THB	ϕ .171	NOTE 2	X	X
02197	R361E-10-HB	ϕ .197	NOTE 1	X	X
02203	R361E-8-HB	ϕ .171	NOTE 1	X	X
02207	R361E-1/4-HB	ϕ .265	NOTE 1	X	X
02209	R361E-1/4-THB	ϕ .265	NOTE 2	X	X
02211	R361E-10-THB	ϕ .197	NOTE 2	X	X
02223	R361E-6-THB	ϕ .145	NOTE 2	X	X
02226	R361E-12-HB	ϕ .223	NOTE 1		
02227	R361E-212-HB	ϕ .212	NOTE 1	X	

Rev.	Description of Change/ SCN#	Date
1	REDRAWN ON SOLIDWORKS NO CHANGES SCJ ORG.ENG.DWG.DATE: 10-14-92	1-3-03
2	ADDED P/Cs SCN# 140162 SCJ	8-21-07
3	ADDED P/Cs PCA# 000033 JMR	2-20-08
4	ECR# 2991 SCJ	4/29/14



UNCONTROLLED COPY

 THIRD ANGLE PROJECTION TOLERANCES UNLESS OTHERWISE SPECIFIED INCHES: .XX - \pm .030 .XXX - \pm .015 ANGLES: \pm 5°	TOOL NO. 0044	Title: RING TERMINAL	
		DO NOT SCALE DWG. Drawn By: S.JOHNSON Date: 1-6-03	Chk'd/App'd By: Scale: 6X Size B
		Dwg. No.: R361E cust	
		ETCO Incorporated Engineered Products 25 Bellows Street Warwick, RI 02888 Phone: (401) 467-2400 Fax: (401) 467-9230 www.ETCO.com	