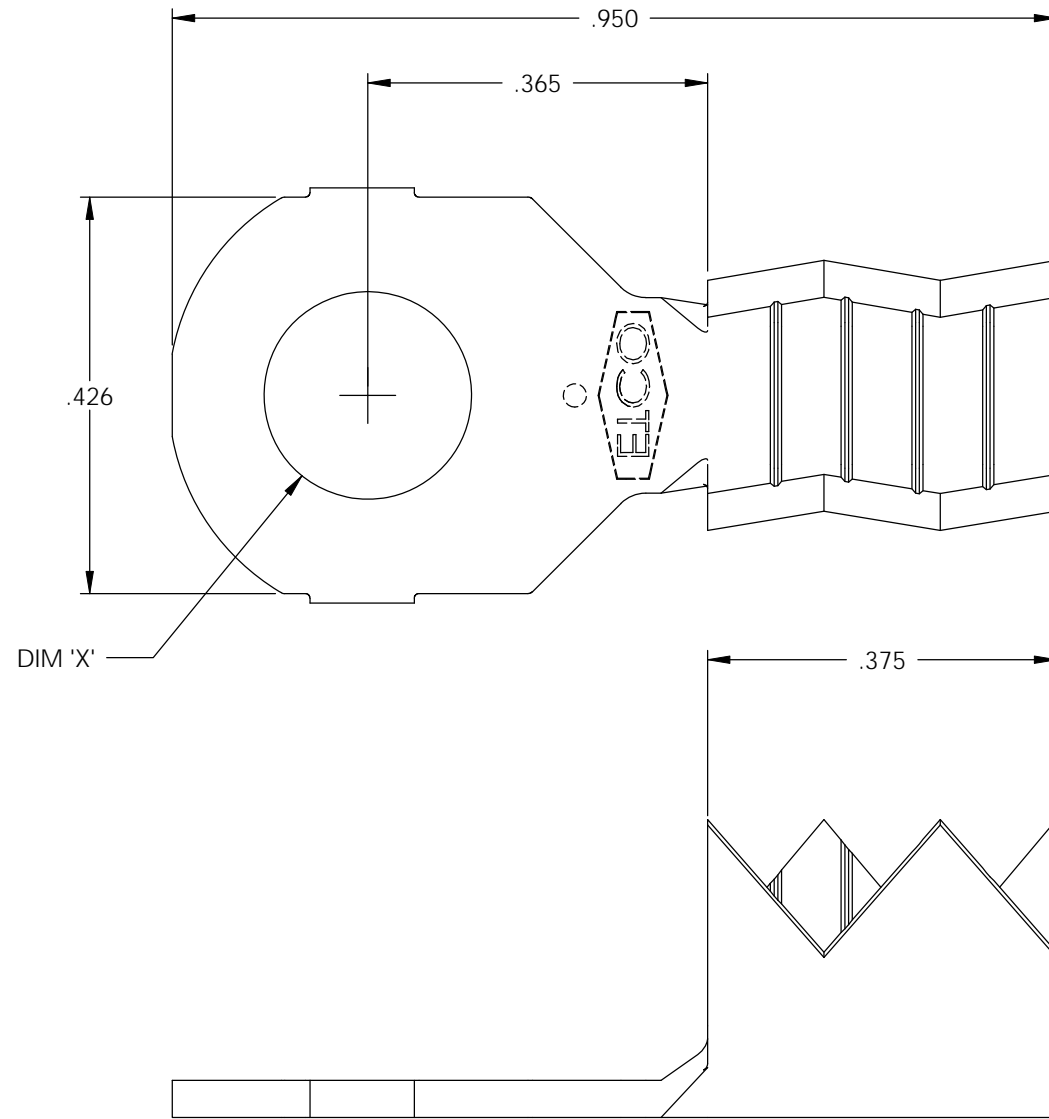


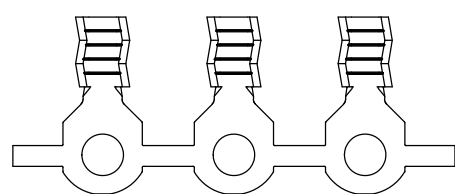
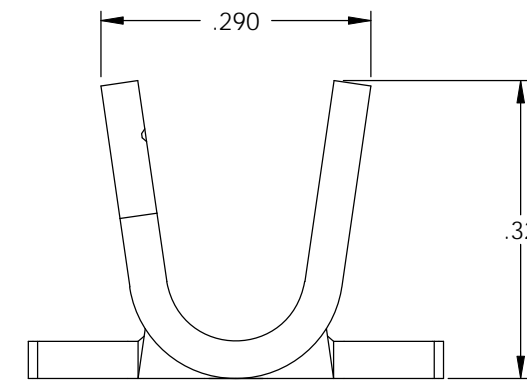
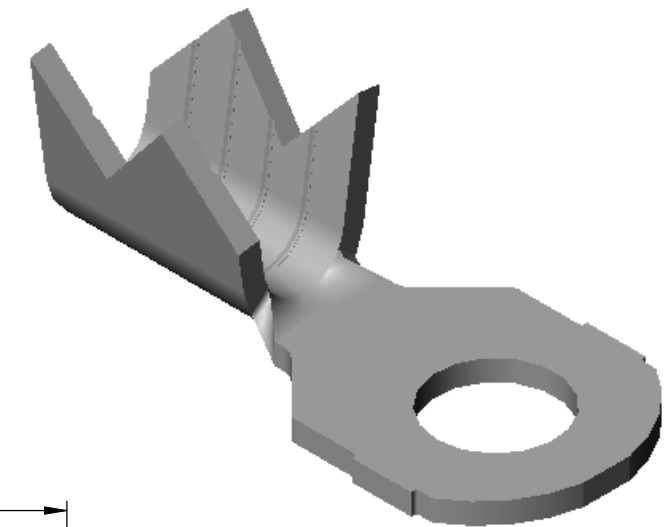
NOTE:

- 1.) MAT'L: .040 THK., BRASS, #2 TEMPER (HALF HARD), PER ETCO METAL CODE NO. 00990.
- 2.) MAT'L: .040 THK., PRE-TINNED BRASS, #2 TEMPER (HALF HARD), PER ETCO METAL CODE NO. 01822.
- 3.) PARTS MAY BE COATED WITH A LIGHT FILM OF LUBRICATION USED IN THE MANUFACTURING PROCESS.
- 4.) WIRE RANGE: 10-8 AWG.

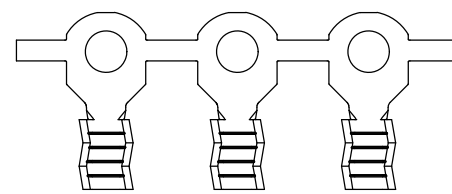
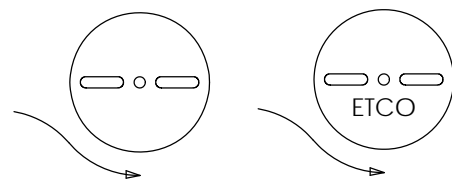


P/C	DESCRIPTION	DIM 'X'	MAT'L	UL	SP
02388	R378-12-HB	∅.223	NOTE 1	X	X
02389	R378-12-THB	∅.223	NOTE 2	X	X
02390	R378-1/4-HB	∅.265	NOTE 1	X	X
02391	R378-10-HB	∅.197	NOTE 1		
02392	R378-10-THB	∅.197	NOTE 2		
02400	R378-1/4-THB	∅.265	NOTE 2	X	X

Rev.	Description of Change/ SCN#	Date
1	REDRAWN ON SOLIDWORKS NO CHANGES SCJ ORG.ENG.DWG.DATE: 12-9-91	1-7-03
2	ADDED P/C SCN# 140162 SCJ	8-21-07



DIRECTION EXITING TOOL,
EARS UP, TO THE BACK



DIRECTION TOWARD APPLICATOR,
EARS UP, TO THE FRONT

THIS PRINT IS THE PROPERTY OF ETCO INCORPORATED. NO PART OF THIS DESIGN MAY BE USED IN ANY WAY WITHOUT WRITTEN CONSENT FROM ETCO INCORPORATED.

UNCONTROLLED COPY

<p>THIRD ANGLE PROJECTION TOLERANCES UNLESS OTHERWISE SPECIFIED INCHES: .XX - ±.030 .XXX - ±.015 ANGLES: ±5°</p>	<p>TOOL NO. 0047</p>	<p>Title: RING TERMINAL</p>		
		<p>DO NOT SCALE DWG.</p>	<p>Drawn By: S.JOHNSON</p>	<p>Date: 1-7-03</p>
<p>ETCO Incorporated Engineered Products 25 Bellows Street Warwick, RI 02888 Phone: (401) 467-2400 Fax: (401) 467-9230 www.ETCO.com</p>		<p>Chk'd/App'd By:</p>	<p>Scale: 5X</p>	<p>Size B</p>
		<p>Dwg. No.:</p>	<p>R378 cust</p>	