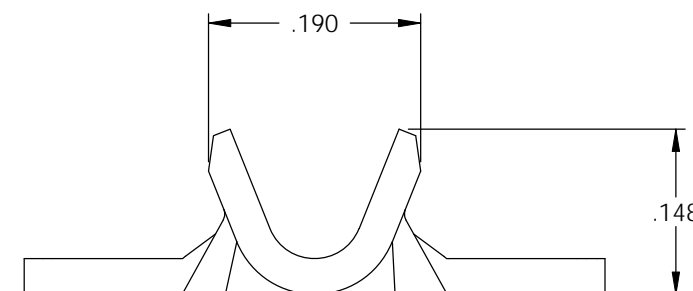
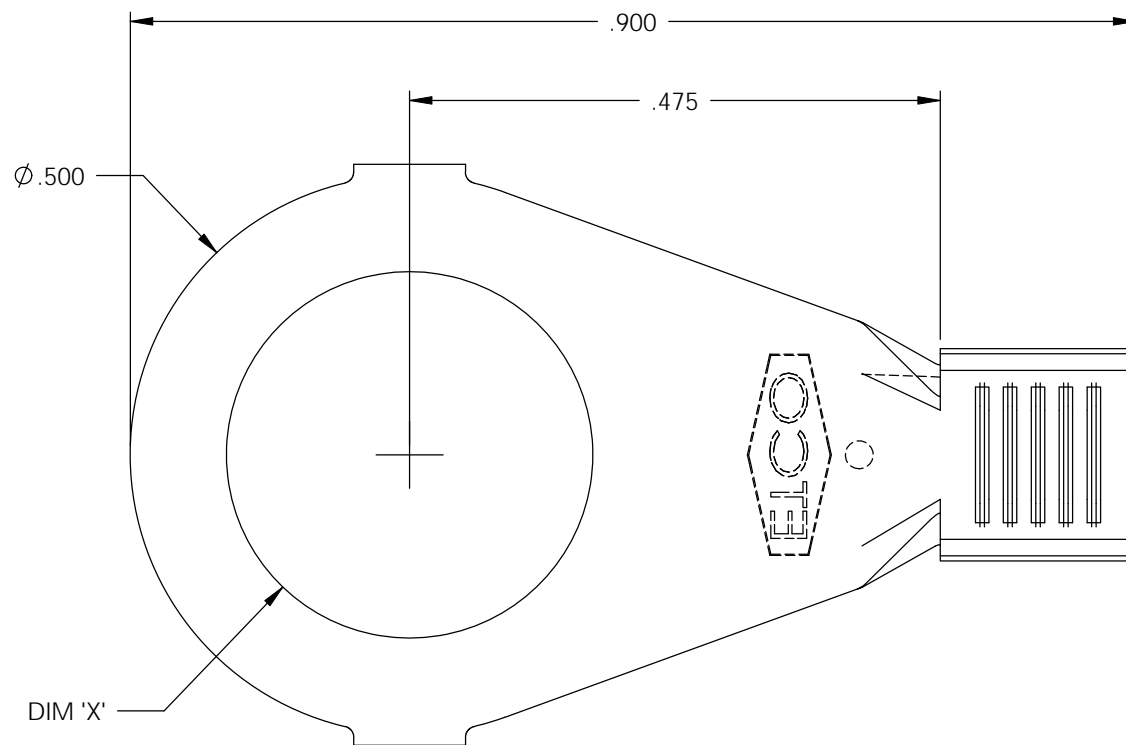
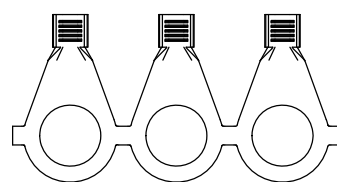


- NOTE:  
 1.) MAT'L: .032 THK., BRASS,  
 #2 TEMPER (HALF HARD),  
 PER ETCO METAL CODE NO. 00870.  
 2.) MAT'L: .032 THK., PRE-TINNED BRASS,  
 #2 TEMPER (HALF HARD),  
 PER ETCO METAL CODE NO. 01785.  
 3.) PARTS MAY BE COATED WITH A LIGHT  
 FILM OF LUBRICATION USED IN THE  
 MANUFACTURING PROCESS.  
 4.) WIRE RANGE: 18-16 AWG.

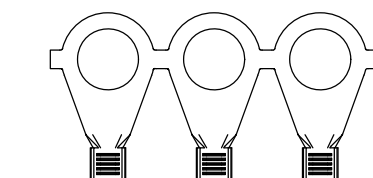
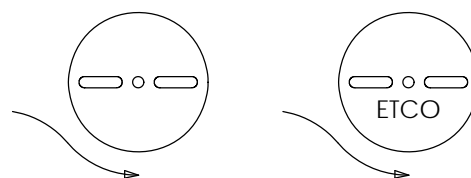


P/C	DESCRIPTION	DIM 'X'	MAT'L	UL	SP
02933	R390-5/16-HB	Ø .328	NOTE 1	X	X
02934	R390-5/16-THB	Ø .328	NOTE 2	X	X
02935	R390-3/8-HB	Ø .400	NOTE 1	X	X
02936	R390-3/8-THB	Ø .400	NOTE 2	X	X

Rev.	Description of Change/ SCN#	Date
1	REDRAWN ON SOLIDWORKS NO CHANGES SCJ ORG.ENG.DWG.DATE: 2-2-93	1-8-03
2	ACTIVATED P/C 02936 SCJ	9-30-05



DIRECTION EXITING TOOL,  
EARS UP, TO THE BACK



DIRECTION TOWARD APPLICATOR,  
EARS UP, TO THE FRONT

THIS PRINT IS THE PROPERTY OF ETCO INCORPORATED. NO PART OF THIS DESIGN MAY BE USED IN ANY WAY WITHOUT WRITTEN CONSENT FROM ETCO INCORPORATED.

## UNCONTROLLED COPY

 THIRD ANGLE PROJECTION TOLERANCES UNLESS OTHERWISE SPECIFIED INCHES: .XX - ±.030 .XXX - ±.015 ANGLES: ±5°	TOOL NO. <b>0050</b>	Title: <b>RING TERMINAL</b>		
		DO NOT SCALE DWG.	Drawn By: S.JOHNSON	Date: 1-8-03
ETCO Incorporated Engineered Products 25 Bellows Street Warwick, RI 02888 Phone: (401) 467-2400 Fax: (401) 467-9230 www.ETCO.com		Chk'd/App'd By:	Scale: 6X	Size B
		Dwg. No.: <b>R390 cust</b>		