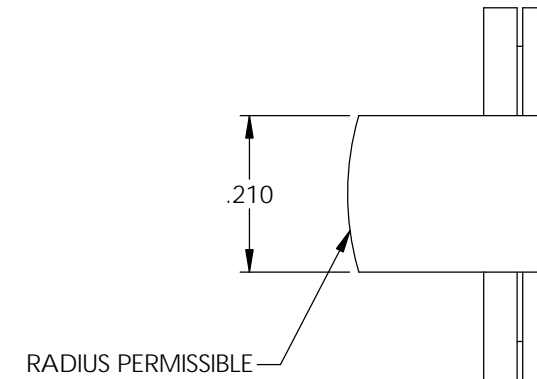
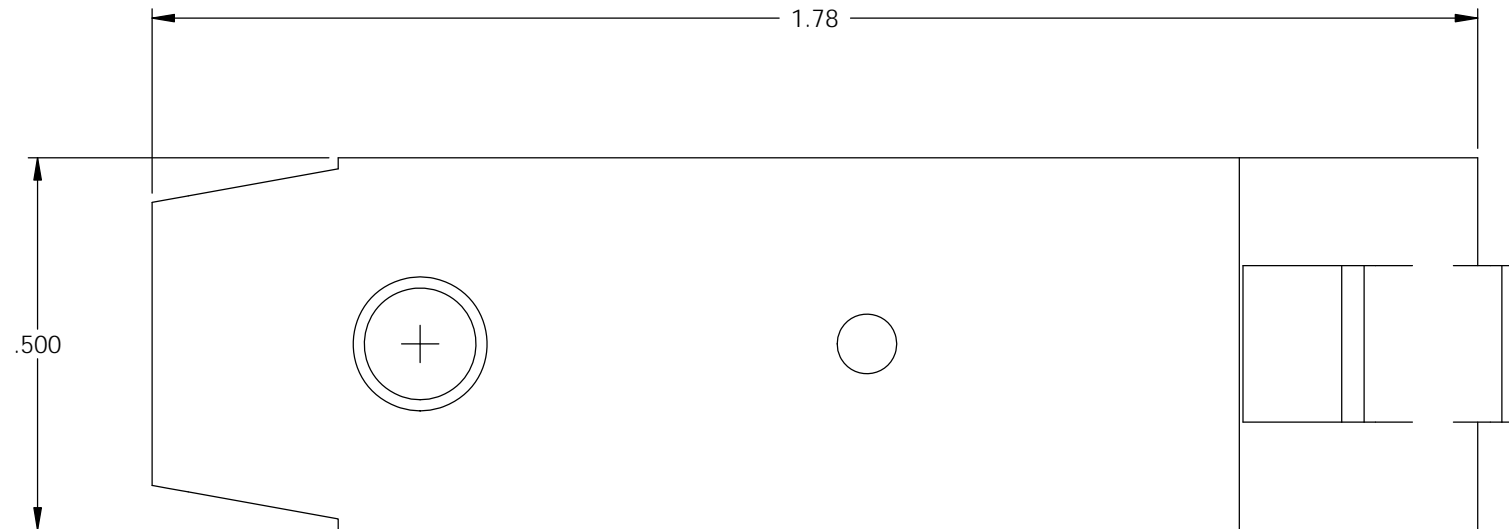
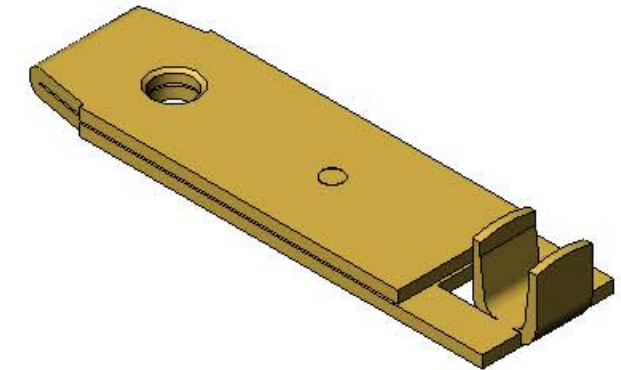
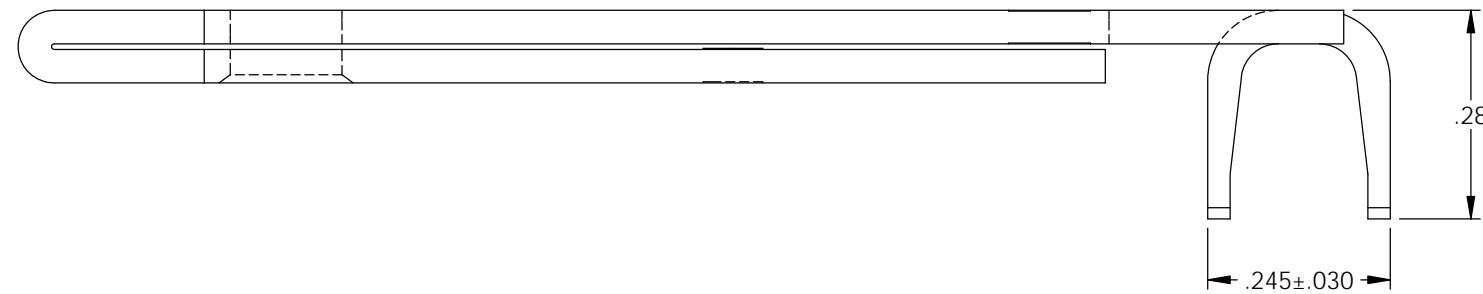


NOTES:

1. MATERIAL: .045 THICK C26000 BRASS  
SOFT TEMPER; ANNEALED TO TEMPER  
PER ETCO METAL CODE 00106
2. PARTS MAY BE COATED WITH A LIGHT FILM OF LUBRICATION  
USED IN THE MANUFACTURING PROCESS.
3. WIRE RANGE: #8-#10 AWG.

Rev.	Description of Change/ SCN#	Date
-	ECR# 866 SCJ	10-13-11

P/C	DESCRIPTION	MAT'L
82012	RB500S-HB	NOTE 1



# UNCONTROLLED COPY

<p>THIRD ANGLE PROJECTION TOLERANCES UNLESS OTHERWISE SPECIFIED INCHES: .XX - ±.030 .XXX - ±.015 ANGLES: ±5°</p>	<p>TOOL NO. <b>0866</b></p>	<p>Title: <b>RANGE BLADE</b></p>			
		<p>ETCO Incorporated Engineered Products 25 Bellows Street Warwick, RI 02888 Phone: (401) 467-2400 Fax: (401) 467-9230 www.ETCO.com</p>	<p>DO NOT SCALE DWG.</p>	<p>Drawn By: S.JOHNSON</p>	<p>Date: 10-13-11</p>
		<p>Chk'd/App'd By:</p>	<p>Scale: 4X</p>	<p>Size B</p>	<p>Dwg. No.: RB500S loose pc. cust</p>