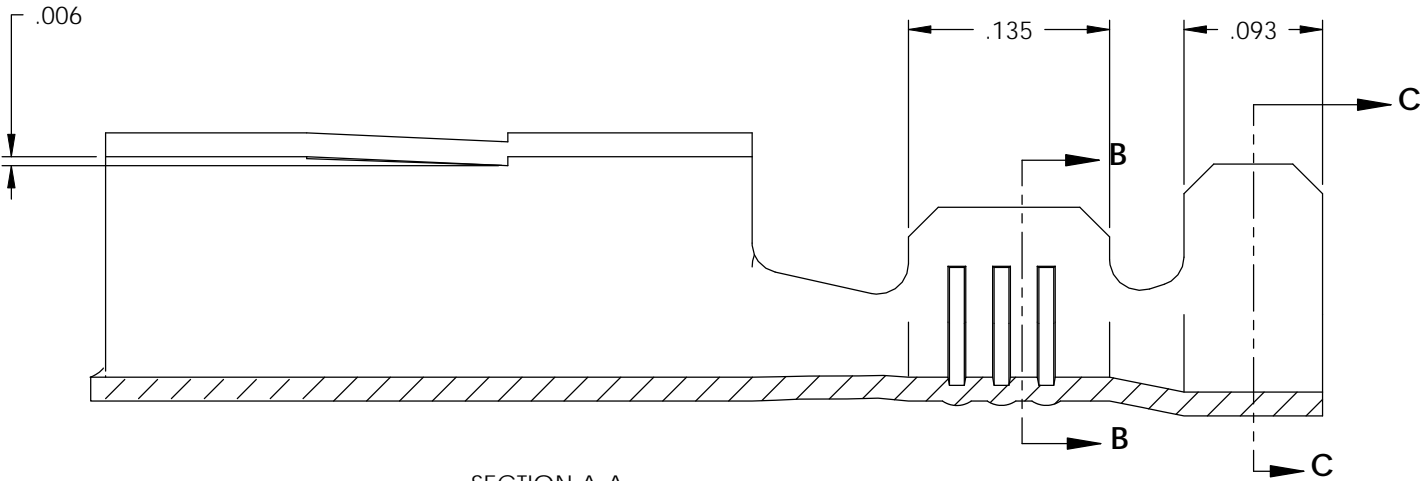
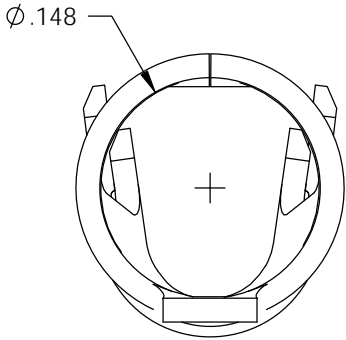
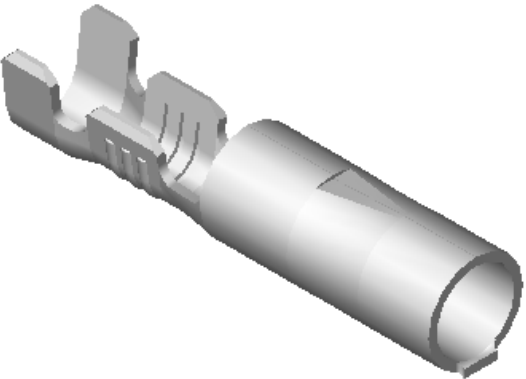
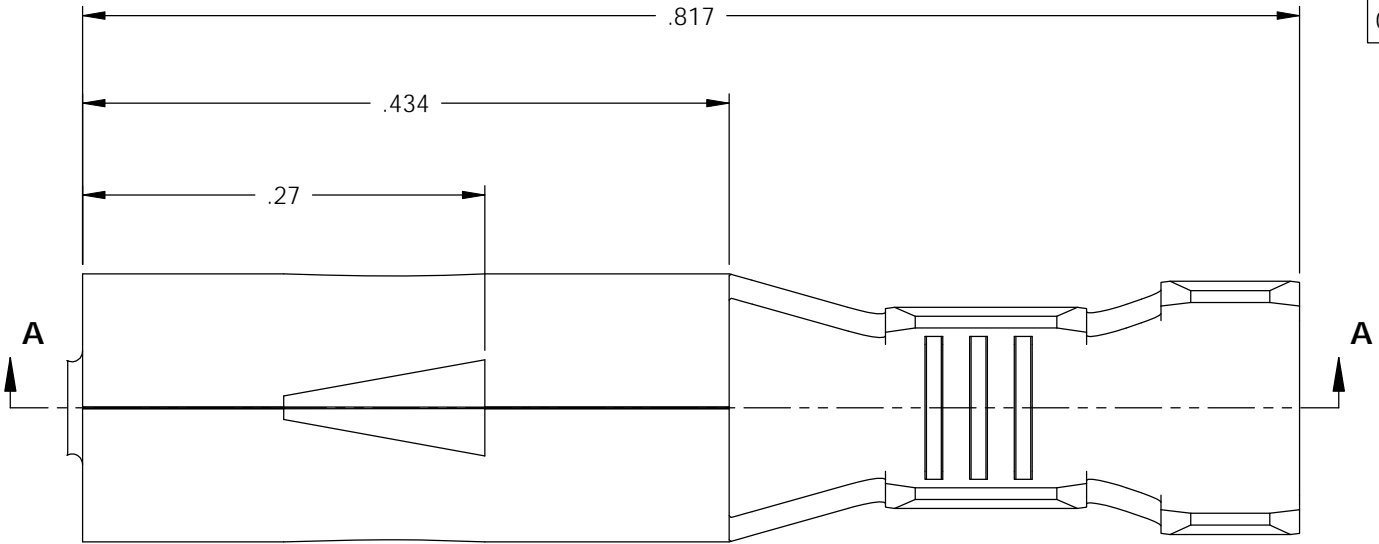


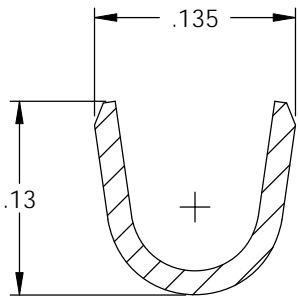
NOTE:
1.) MAT'L: .016 THK., PRE-TINNED BRASS,
#4 TEMPER (FULL HARD),
PER ETCO METAL CODE NO. 01269.
2.) PARTS MAY BE COATED WITH A LIGHT
FILM OF LUBRICATION USED IN THE
MANUFACTURING PROCESS.
3.) WIRE RANGE: 20-16 AWG.
4.) INSUL RANGE: Ø .090-.125
5.) TO ACCEPT A Ø .156 PIN TERMINAL.

P/C	DESCRIPTION
09409	RE156C-1-THB

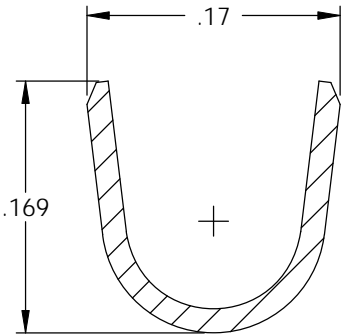
Rev.	Description of Change/ SCN#	Date
1	REDRAWN ON SOLIDWORKS NO CHANGES SCJ ORG.ENG.DWG.DATE: 3-8-02	6-15-05



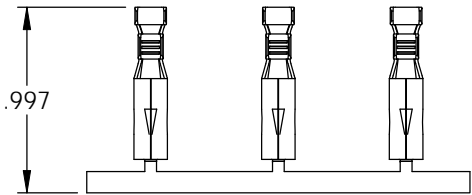
SECTION A-A
SCALE 8 : 1



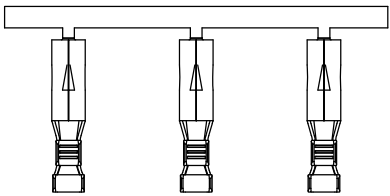
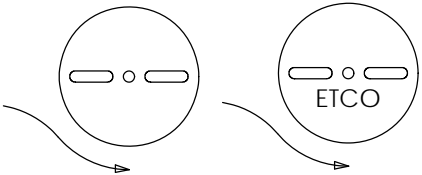
SECTION B-B
SCALE 8 : 1



SECTION C-C
SCALE 8 : 1





DIRECTION EXITING TOOL,
EARS UP, CARRIER TO THE FRONT



DIRECTION TOWARD APPLICATOR,
EARS UP, CARRIER TO THE BACK

UNCONTROLLED COPY

<div></div> <div>THIRD ANGLE PROJECTION</div> <div>TOLERANCES UNLESS OTHERWISE SPECIFIED</div> <div>INCHES: .XX - ±.030 .XXX - ±.015</div> <div>ANGLES: ±5°</div>	TOOL NO. 0649	Title: Ø .156 RECEPTACLE				
		DO NOT SCALE DWG.		Drawn By: S.JOHNSON	Date: 6-15-05	
		ETCO Incorporated Engineered Products 25 Bellows Street Warwick, RI 02888 Phone: (401) 467-2400 Fax: (401) 467-9230 www.ETCO.com		Chk'd/App'd By:	Scale: 8X	Size B
				Dwg. No.: RE156C-1 cust		