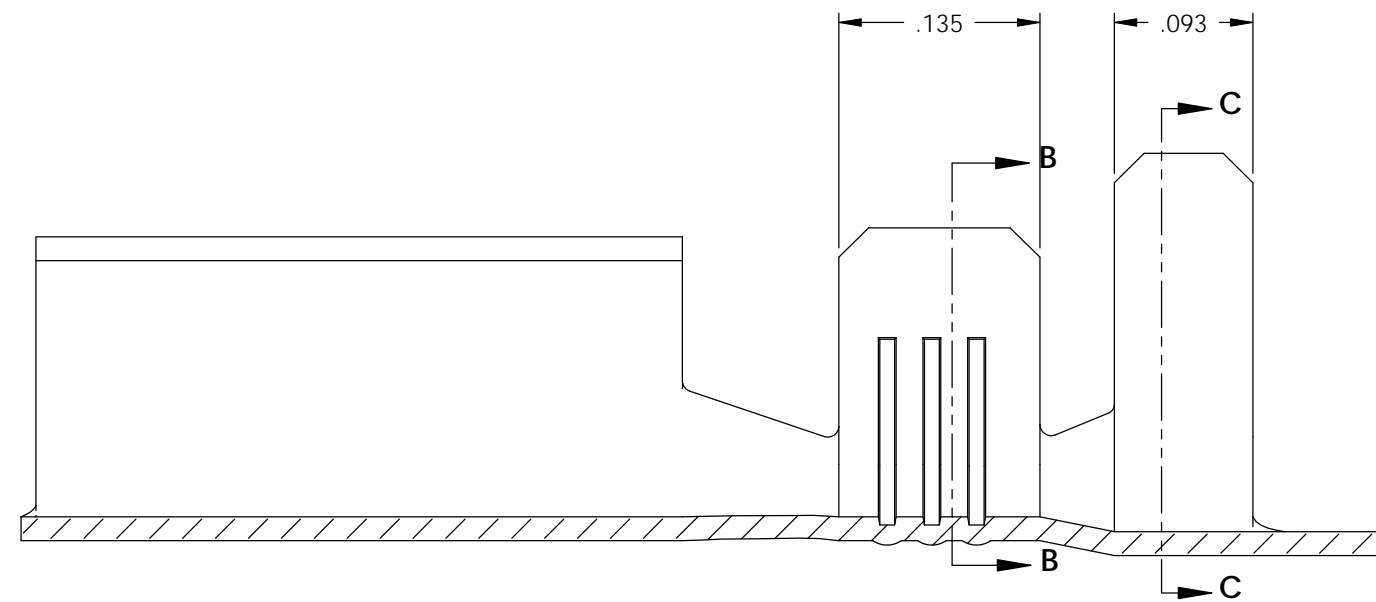
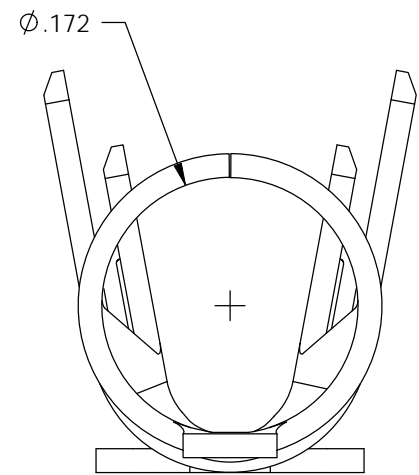
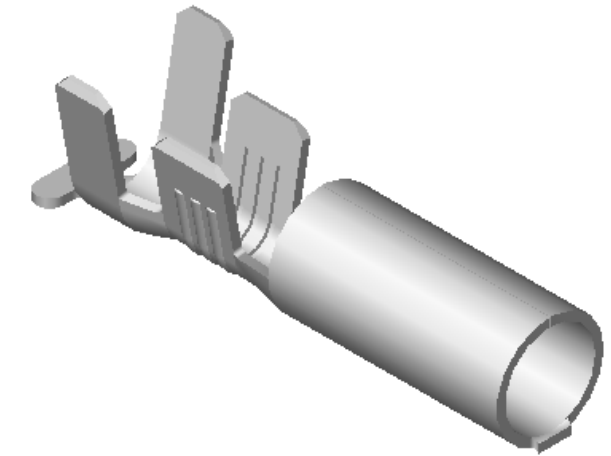
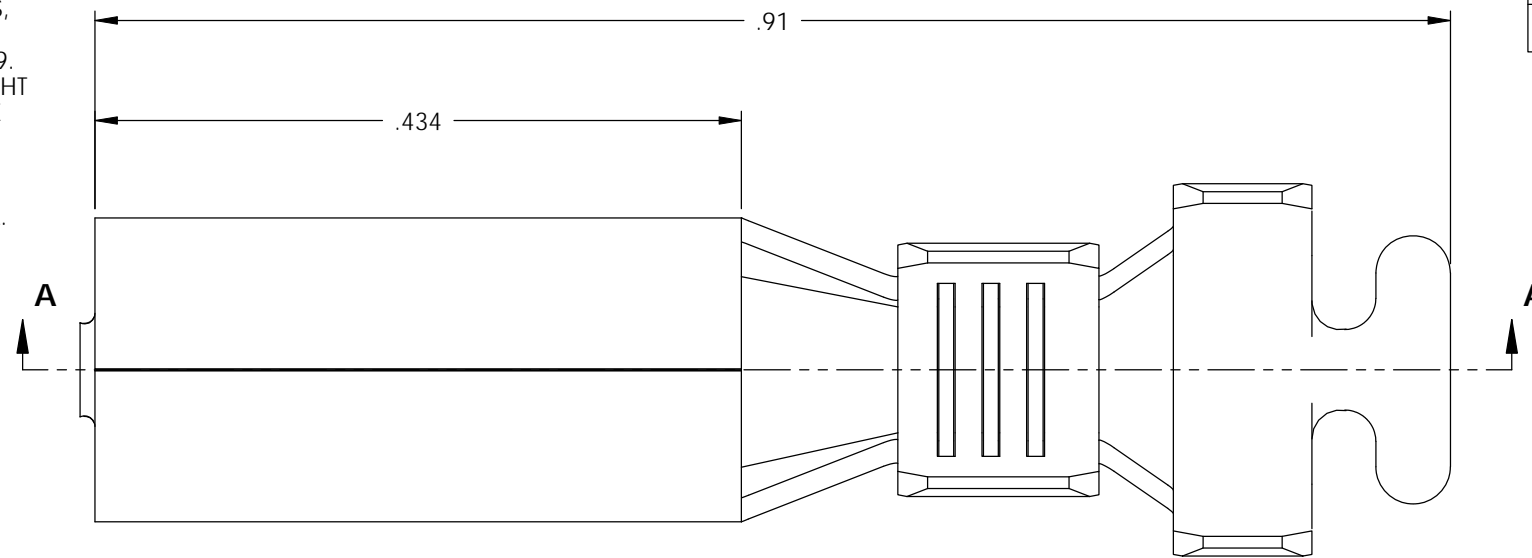


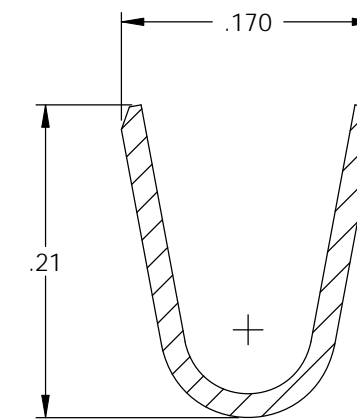
- NOTE:
 1.) MAT'L: .016 THK., BRASS,
 #4 TEMPER (FULL HARD),
 PER ETCO METAL CODE NO. 00194.
 2.) MAT'L: .016 THK., PRE-TINNED BRASS,
 #4 TEMPER (FULL HARD),
 PER ETCO METAL CODE NO. 01269.
 3.) PARTS MAY BE COATED WITH A LIGHT
 FILM OF LUBRICATION USED IN THE
 MANUFACTURING PROCESS.
 4.) WIRE RANGE: 12-10 AWG.
 5.) INSUL RANGE: ϕ .150-.250
 6.) TO ACCEPT A ϕ .180 PIN TERMINAL.

P/C	DESCRIPTION	MAT'L
09401	RE180-D-THB	NOTE 2
09407	RE180-D-HB	NOTE 1

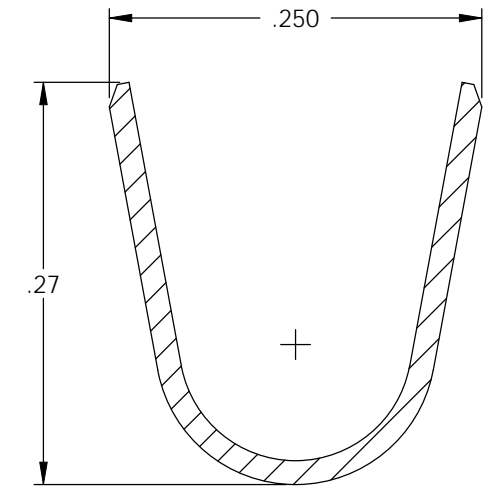
Rev.	Description of Change/ SCN#	Date
2	REDRAWN ON SOLIDWORKS NO CHANGES SCJ ORG.ENG.DWG.DATE: 1-25-82	6-17-05



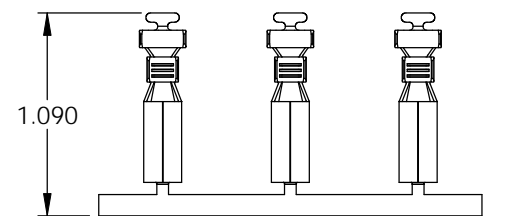
SECTION A-A
SCALE 8 : 1



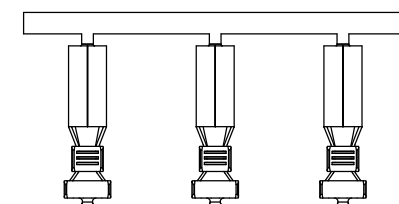
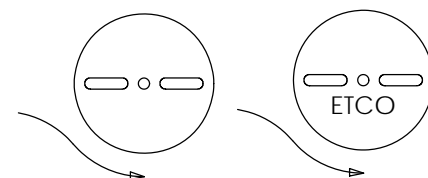
SECTION B-B
SCALE 8 : 1



SECTION C-C
SCALE 8 : 1



DIRECTION EXITING TOOL,
EARS UP, CARRIER TO THE FRONT



DIRECTION TOWARD APPLICATOR,
EARS UP, CARRIER TO THE BACK

UNCONTROLLED COPY

 THIRD ANGLE PROJECTION TOLERANCES UNLESS OTHERWISE SPECIFIED INCHES: .XX - \pm .030 .XXX - \pm .015 ANGLES: \pm 5°	TOOL NO. 0649	Title: ϕ .180 RECEPTACLE	
		DO NOT SCALE DWG.	Drawn By: S.JOHNSON Date: 6-15-05
ETCO Incorporated Engineered Products 25 Bellows Street Warwick, RI 02888 Phone: (401) 467-2400 Fax: (401) 467-9230 www.ETCO.com		Chk'd/App'd By:	Scale: 8X Size: B
		Dwg. No.: RE180-D cust	