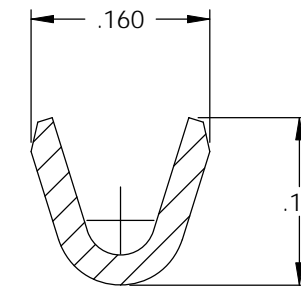
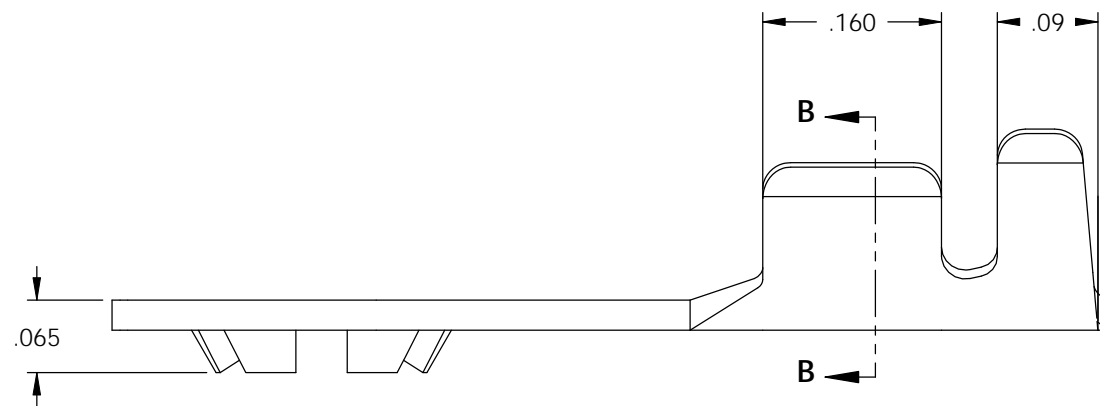
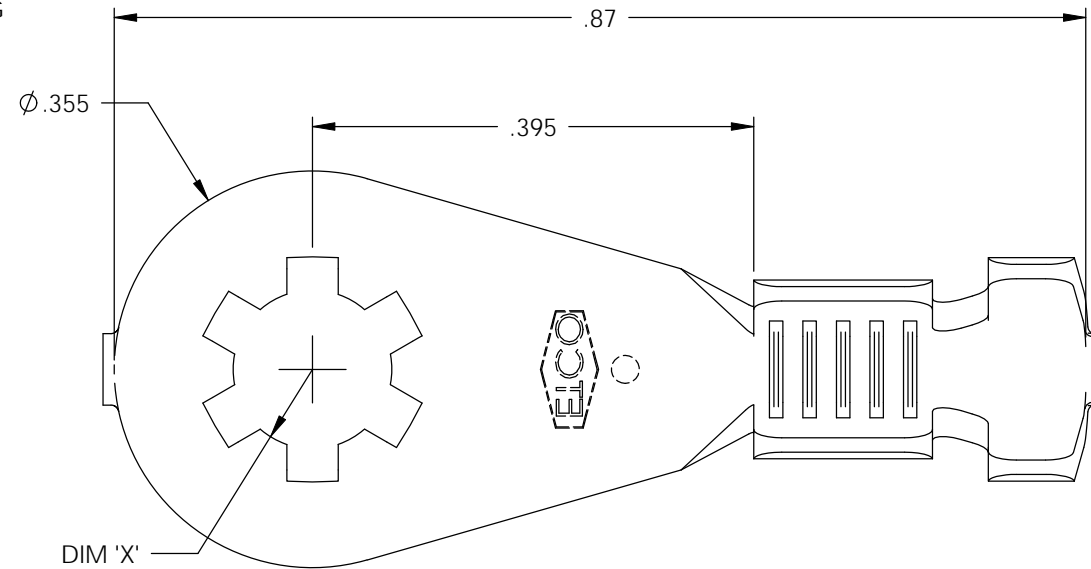
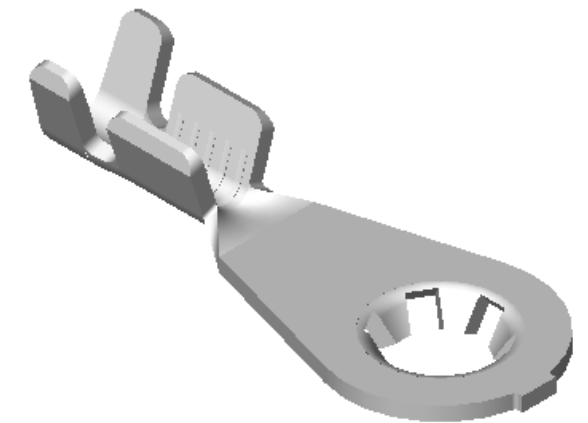


NOTE:

- 1.) MAT'L: .027 THK., BRASS, #2 TEMPER (HALF HARD), PER ETCO METAL CODE NO. 00693.
- 2.) MAT'L: .027 THK., PRE-TINNED BRASS, #2 TEMPER (HALF HARD), PER ETCO METAL CODE NO. 01669.
- 3.) PARTS MAY BE COATED WITH A LIGHT FILM OF LUBRICATION USED IN THE MANUFACTURING PROCESS.
- 4.) WIRE RANGE: 20-16 AWG.
- 5.) INSUL RANGE: ϕ .075-.125

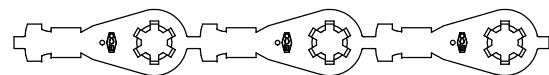
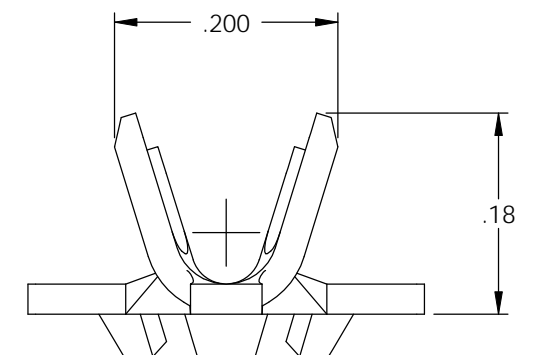


SECTION B-B

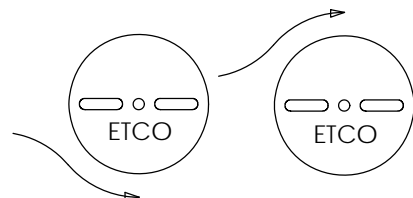


Rev.	Description of Change/ SCN#	Date
1	REDRAWN ON SOLIDWORKS NO CHANGES SCJ ORG.ENG.DWG.DATE: 9-16-91	1-6-03
2	COMPLETED P/C LIST SCJ	7-23-08

P/C	DESCRIPTION	DIM 'X'	MAT'L	UL	SP
02176	RL360E-6-HB	ϕ .145	NOTE 1	X	X
02177	RL360E-8-HB	ϕ .171	NOTE 1	X	X
02178	RL360E-6-THB	ϕ .145	NOTE 2	X	X
02179	RL360E-8-THB	ϕ .171	NOTE 2	X	X
02199	RL360E-10-HB	ϕ .197	NOTE 1	X	X
02213	RL360E-10-THB	ϕ .197	NOTE 2	X	X



DIRECTION EXITING TOOL,
EARS DOWN, TO THE LEFT



DIRECTION TOWARD APPLICATOR,
EARS UP, TO THE RIGHT

UNCONTROLLED COPY

<p>THIRD ANGLE PROJECTION TOLERANCES UNLESS OTHERWISE SPECIFIED INCHES: .XX - \pm.030 .XXX - \pm.015 ANGLES: \pm5°</p>	<p>TOOL NO. 0040</p>	<p>Title: LOCKING RING TERMINAL</p>			
		<p>ETCO Incorporated Engineered Products 25 Bellows Street Warwick, RI 02888 Phone: (401) 467-2400 Fax: (401) 467-9230 www.ETCO.com</p>	<p>DO NOT SCALE DWG.</p>	<p>Drawn By: S.JOHNSON</p>	<p>Date: 1-6-03</p>
		<p>Chk'd/App'd By:</p>	<p>Scale: 6X</p>	<p>Size B</p>	<p>Dwg. No.: RL360E cust</p>