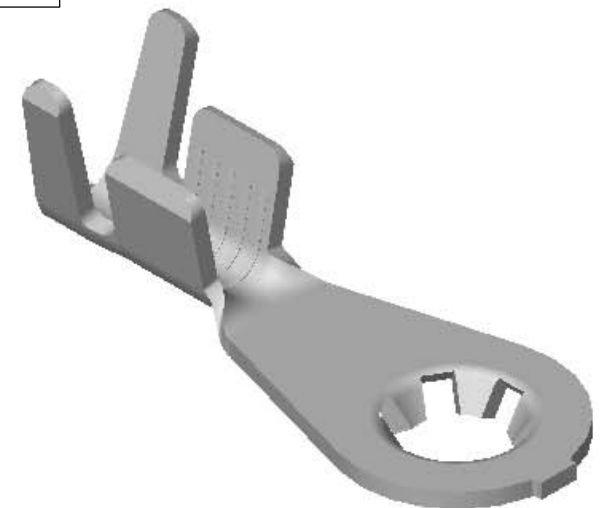
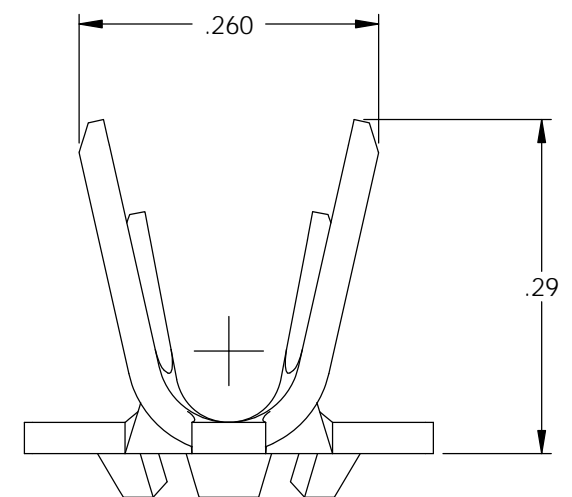
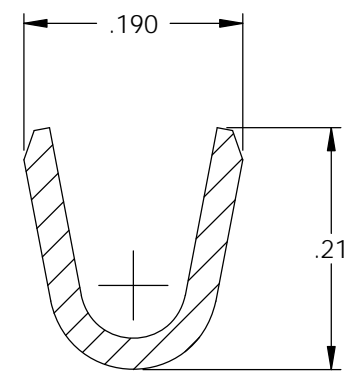
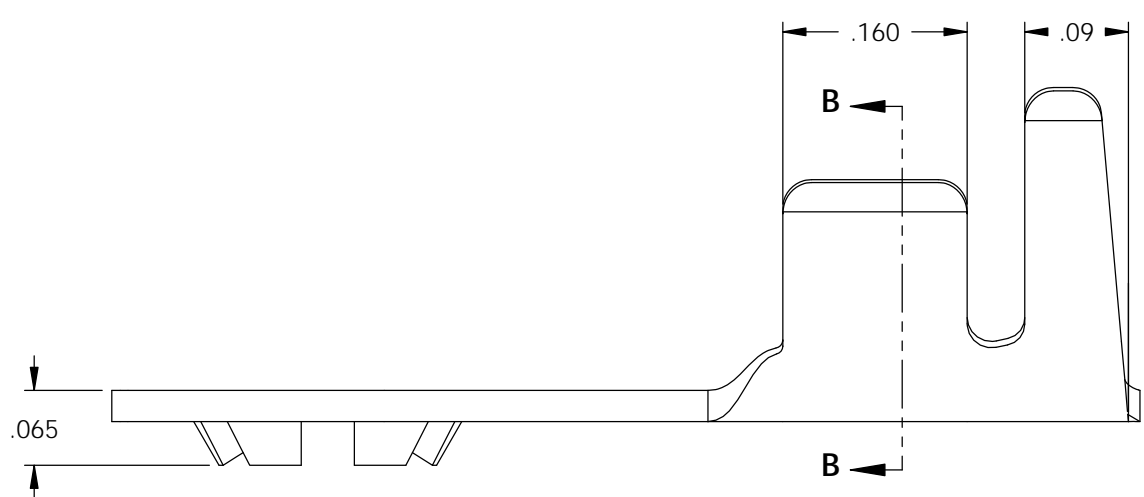
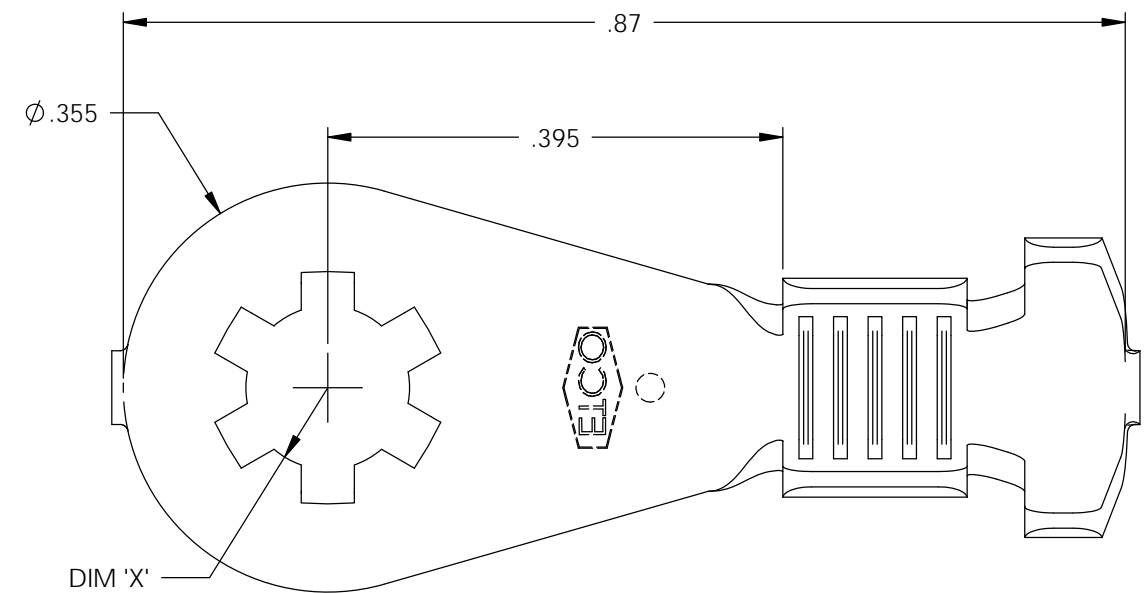
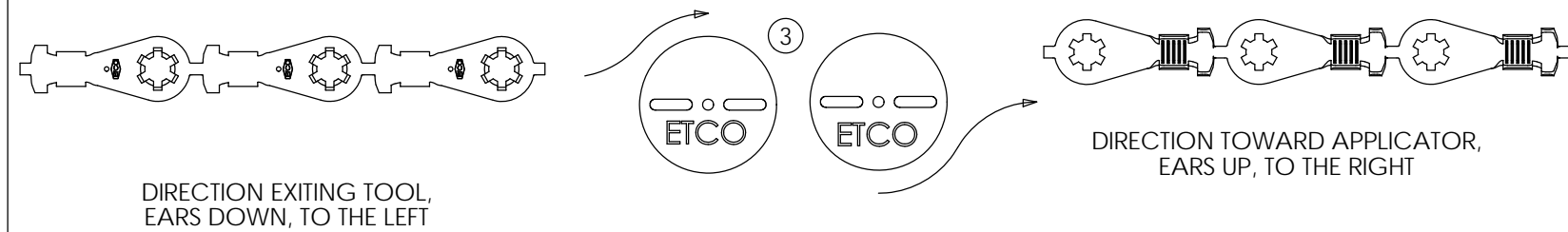


- NOTE:
 1.) MAT'L: .027 THK., BRASS,
 #2 TEMPER (HALF HARD),
 PER ETCO METAL CODE NO. 00700.
 2.) MAT'L: .027 THK., PRE-TINNED BRASS,
 #2 TEMPER (HALF HARD),
 PER ETCO METAL CODE NO. 01672.
 3.) PARTS MAY BE COATED WITH A
 LIGHT FILM OF LUBRICATION
 USED IN THE MANUFACTURING
 PROCESS.
 4.) WIRE RANGE: 16-12 AWG.
 5.) INSUL RANGE: ϕ .145-.180



P/C	DESCRIPTION	DIM 'X'	MAT'L	UL	SP
02135	RL361E-6-HB	ϕ .145	NOTE 1	X	X
02196	RL361E-10-HB	ϕ .197	NOTE 1	X	X
02202	RL361E-8-HB	ϕ .171	NOTE 1	X	X
02215	RL361E-10-THB	ϕ .197	NOTE 2	X	X
02217	RL361E-8-THB	ϕ .171	NOTE 2	X	X
02219	RL361E-6-THB	ϕ .145	NOTE 2	X	X

Rev.	Description of Change/ SCN#	Date
1	REDRAWN ON SOLIDWORKS NO CHANGES SCJ ORG.ENG.DWG.DATE: 10-19-92	1-6-03
2	ADDED P/Cs SCN#140162 SCJ	8-21-07
3	ECR# 2991 SCJ	4/29/14



THIS PRINT IS THE PROPERTY OF ETCO INCORPORATED. NO PART OF THIS DESIGN MAY BE USED IN ANY WAY WITHOUT WRITTEN CONSENT FROM ETCO INCORPORATED.

UNCONTROLLED COPY

<p>THIRD ANGLE PROJECTION TOLERANCES UNLESS OTHERWISE SPECIFIED INCHES: .XX - \pm.030 .XXX - \pm.015 ANGLES: \pm5°</p>	<p>TOOL NO. 0044</p>	<p>Title: LOCKING RING TERMINAL</p>		
		<p>DO NOT SCALE DWG.</p>	<p>Drawn By: S.JOHNSON</p>	<p>Date: 1-6-03</p>
		<p>Chk'd/App'd By:</p>	<p>Scale: 6X</p>	<p>Size B</p>
		<p>Dwg. No.: RL361E cust</p>		
		<p>ETCO Incorporated Engineered Products 25 Bellows Street Warwick, RI 02888 Phone: (401) 467-2400 Fax: (401) 467-9230 www.ETCO.com</p>		