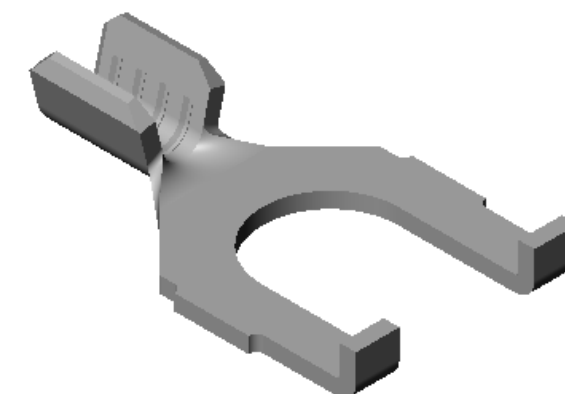
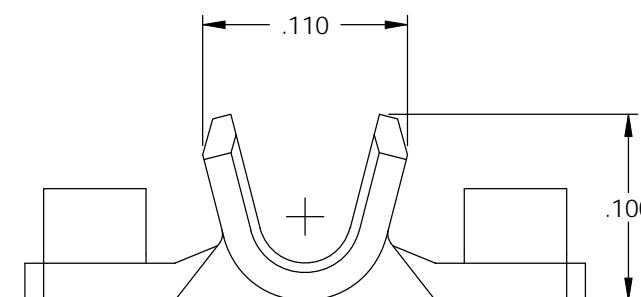
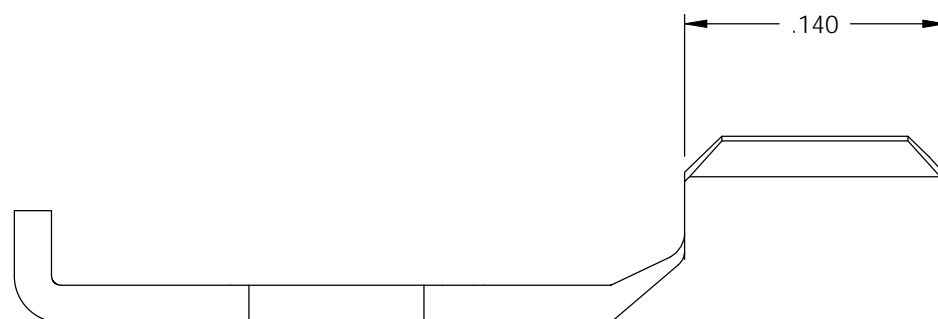
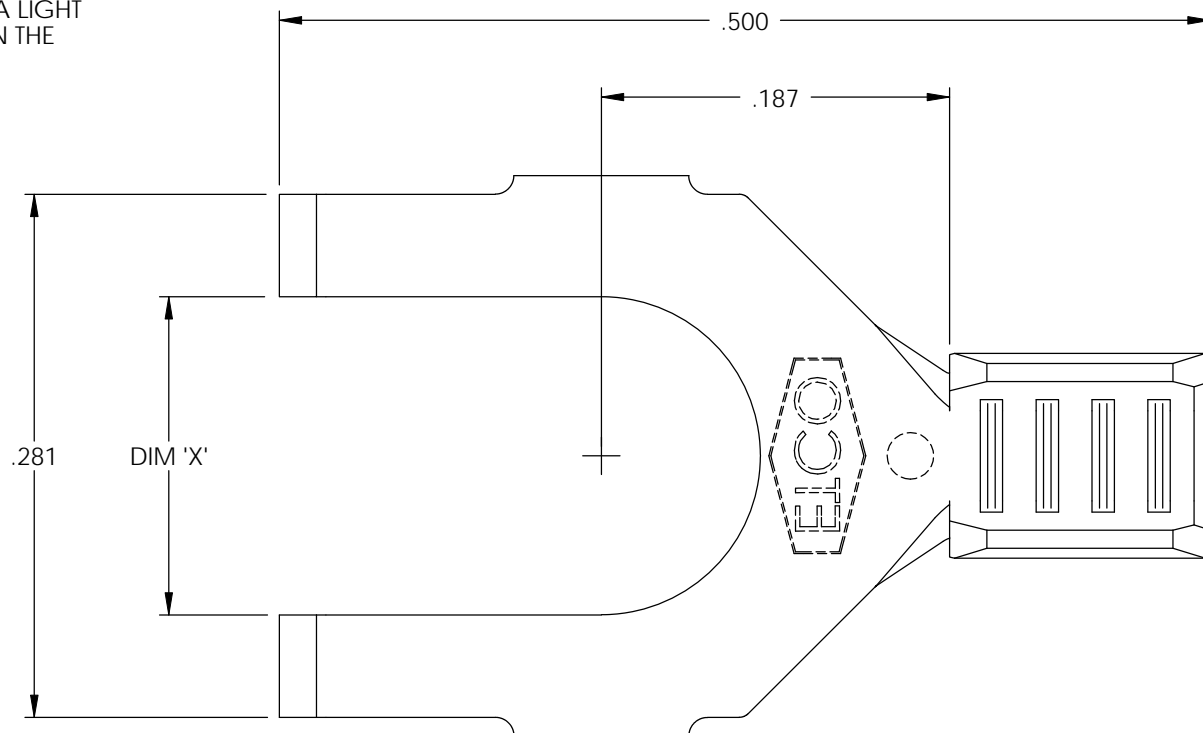



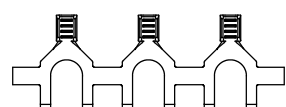
NOTE:

- 1.) MAT'L: .020 THK., BRASS, #2 TEMPER (HALF HARD), PER ETCO METAL CODE NO. 00310.
- 2.) MAT'L: .020 THK., PRE-TINNED BRASS, #2 TEMPER (HALF HARD), PER ETCO METAL CODE NO. 01390.
- 3.) MAT'L: .020 THK., PRE-NICKEL PLATED STEEL, #3 TEMPER (QUARTER HARD), PER ETCO METAL CODE NO. 03220.
- 4.) PARTS MAY BE COATED WITH A LIGHT FILM OF LUBRICATION USED IN THE MANUFACTURING PROCESS.
- 5.) WIRE RANGE: 22-20 AWG.

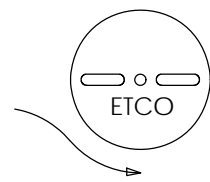
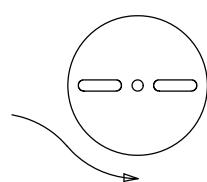


P/C	DESCRIPTION	DIM 'X'	MAT'L	
03116	S115N-4-HB	.119	NOTE 1	X
03117	S115N-4-THB	.119	NOTE 2	X
03118	S115N-4-NPS	.119	NOTE 3	
03119	S115N-6-HB	.145	NOTE 1	X
03121	S115N-6-THB	.145	NOTE 2	X
03122	S115N-6-NPS	.145	NOTE 3	
03123	S115N-8-HB	.171	NOTE 1	X
03124	S115N-8-THB	.171	NOTE 2	X
03125	S115N-8-NPS	.171	NOTE 3	

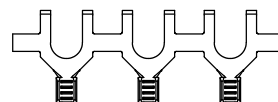
Rev.	Description of Change/ SCN#	Date
1	SCN# 102057 SCJ ORG.ENG.DWG.DATE: 1-13-93	11-18-02
2	ADDED P/Cs SCN#140162 SCJ	7-31-07





DIRECTION EXITING TOOL,  
EARS UP TO THE BACK



DIRECTION TOWARD APPLICATOR,  
EARS UP TO THE FRONT



# UNCONTROLLED COPY

 THIRD ANGLE PROJECTION TOLERANCES UNLESS OTHERWISE SPECIFIED INCHES: .XX - ±.030 .XXX - ±.015 ANGLES: ±5°	TOOL NO. <b>0675</b>	Title: <b>SPADE TERMINAL</b>		
		ETCO Incorporated Engineered Products 25 Bellows Street Warwick, RI 02888 Phone: (401) 467-2400 Fax: (401) 467-9230 www.ETCO.com	DO NOT SCALE DWG. Drawn By: S.JOHNSON Date: 11-18-02	Chk'd/App'd By: Scale: 10X Size: B
		Dwg. No.: <b>S115N cust</b>		