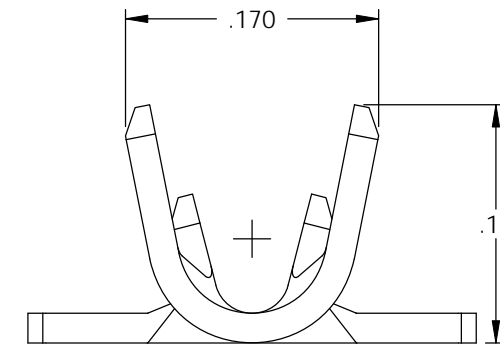
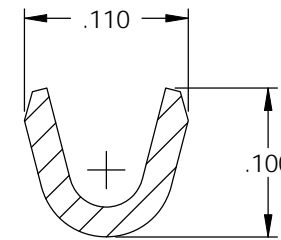
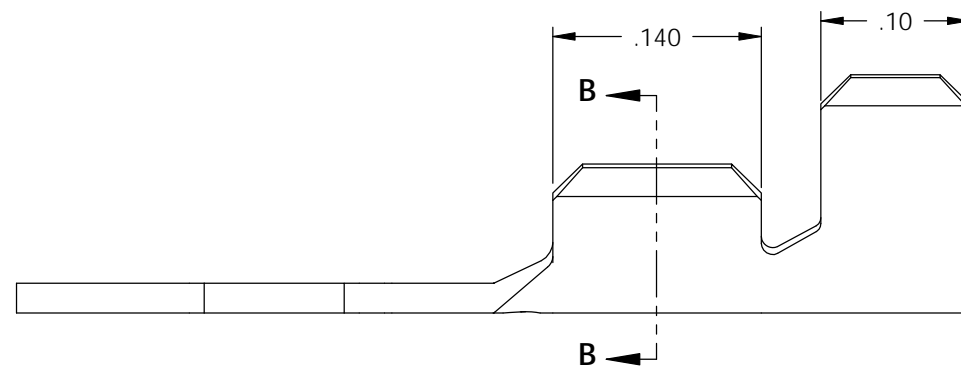
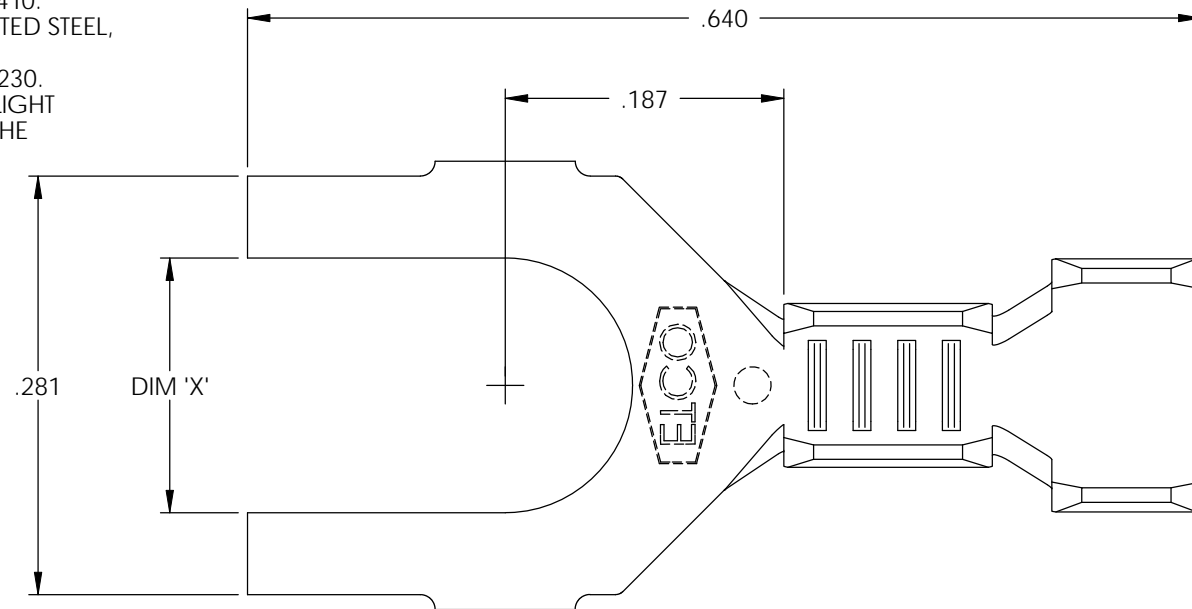


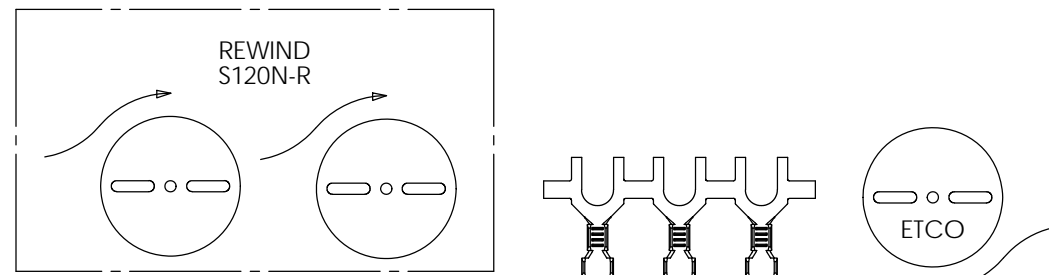
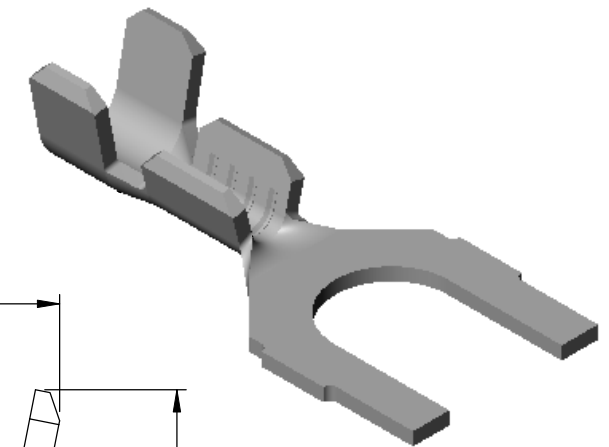
NOTE:

- 1.) MAT'L: .020 THK., BRASS, #2 TEMPER (HALF HARD), PER ETCO METAL CODE NO. 00330.
- 2.) MAT'L: .020 THK., PRE-TINNED BRASS, #2 TEMPER (HALF HARD), PER ETCO METAL CODE NO. 01410.
- 3.) MAT'L: .020 THK., PRE-NICKEL PLATED STEEL, #3 TEMPER (QUARTER HARD), PER ETCO METAL CODE NO. 03230.
- 4.) PARTS MAY BE COATED WITH A LIGHT FILM OF LUBRICATION USED IN THE MANUFACTURING PROCESS.
- 5.) WIRE RANGE: 22-20 AWG.
- 6.) INSUL RANGE:  $\varnothing$ .075-.125

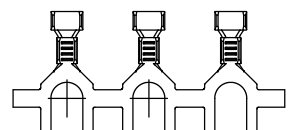


P/C	DESCRIPTION	DIM 'X'	REWIND	MAT'L	
03136	S120N-4-HB	.119	NO	NOTE 1	X
03137	S120N-4-THB	.119	NO	NOTE 2	X
03138	S120N-4-NPS	.119	NO	NOTE 3	
03141	S120N-6-HB	.145	NO	NOTE 1	X
03142	S120N-6-THB	.145	NO	NOTE 2	X
03143	S120N-8-HB	.171	NO	NOTE 1	X
03144	S120N-R-8-HB	.171	YES	NOTE 1	X
03145	S120N-8-THB	.171	NO	NOTE 2	X
03146	S120N-6-NPS	.145	NO	NOTE 3	
03147	S120N-8-NPS	.171	NO	NOTE 3	

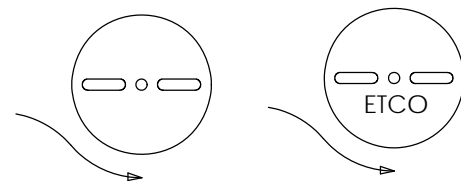
Rev.	Description of Change/ SCN#	Date
1	SCN# 102057 SCJ ORG.ENG.DWG.DATE: 1-13-93	11-18-02
2	ADDED P/Cs SCN#140162 SCJ	7-31-07



S120N-R  
DIRECTION TOWARD APPLICATOR, FROM RIGHT,  
EARS UP, TO THE FRONT, AFTER REWIND



DIRECTION EXITING TOOL,  
EARS UP TO THE BACK



S120N  
DIRECTION TOWARD APPLICATOR, FROM LEFT,  
EARS UP, TO THE FRONT

THIS PRINT IS THE PROPERTY OF ETCO INCORPORATED. NO PART OF THIS DESIGN MAY BE USED IN ANY WAY WITHOUT WRITTEN CONSENT FROM ETCO INCORPORATED.

<b>UNCONTROLLED COPY</b>			
 THIRD ANGLE PROJECTION TOLERANCES UNLESS OTHERWISE SPECIFIED INCHES: .XX - $\pm$ .030 .XXX - $\pm$ .015 ANGLES: $\pm$ 5°	TOOL NO. <b>0675</b>	Title: <b>SPADE TERMINAL</b>	
		DO NOT SCALE DWG. Drawn By: S.JOHNSON Date: 11-18-02	Chk'd/App'd By: Scale: 8X Size: B
ETCO Incorporated Engineered Products 25 Bellows Street Warwick, RI 02888 Phone: (401) 467-2400 Fax: (401) 467-9230 www.ETCO.com		Dwg. No.: <b>S120N, &amp; S120N-R cust</b>	