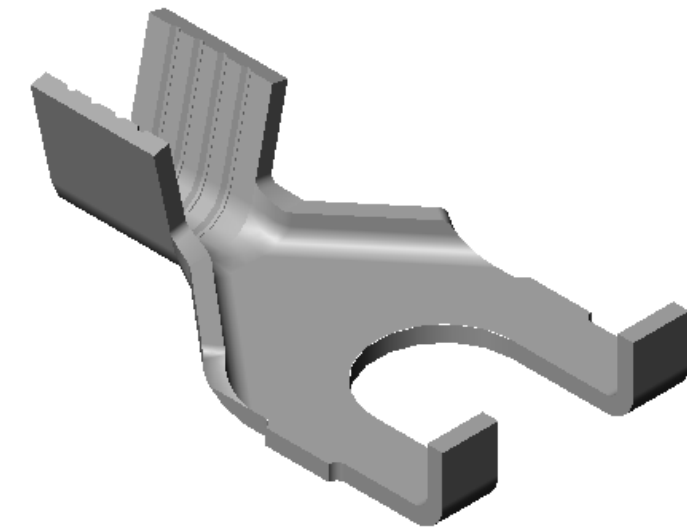
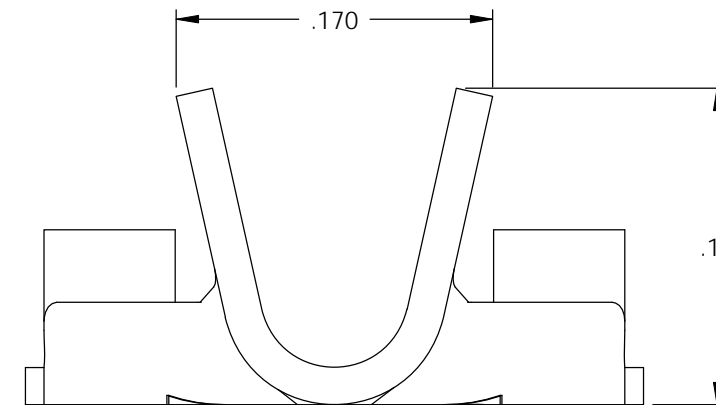
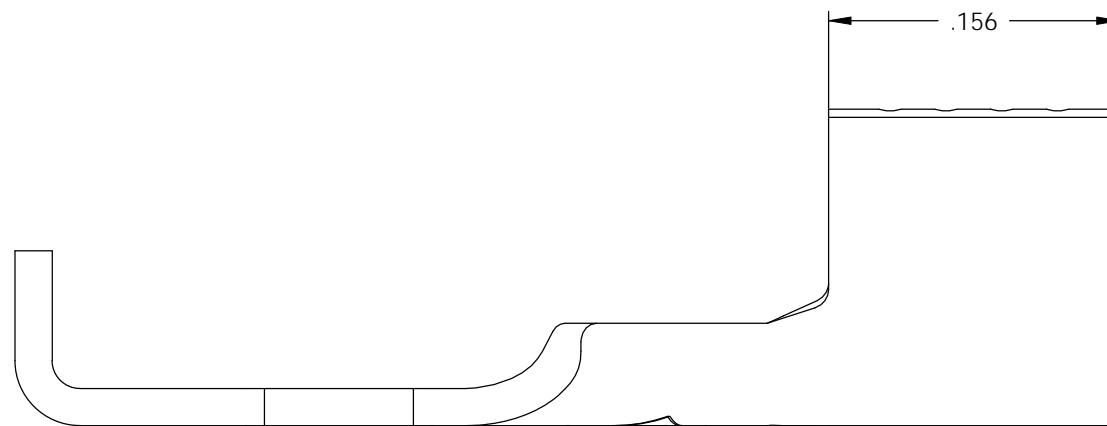
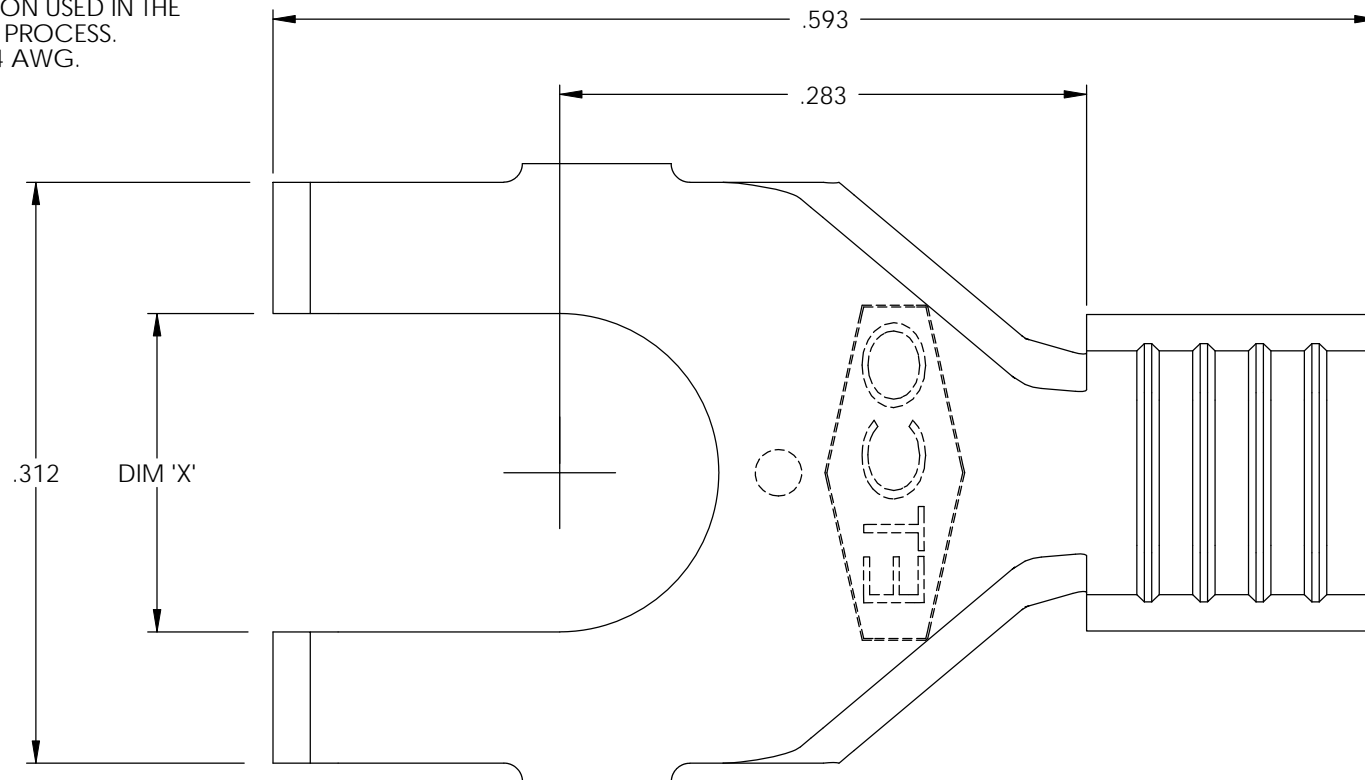


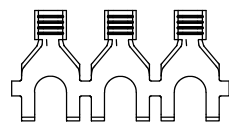
NOTE :

- 1.) MAT'L: .020 THK., BRASS, #2 TEMPER (HALF HARD), PER ETCO METAL CODE NO. 00350.
- 2.) MAT'L: .020 THK., PRE-TINNED BRASS, #2 TEMPER (HALF HARD), PER ETCO METAL CODE NO. 01420.
- 3.) PARTS MAY BE COATED WITH A LIGHT FILM OF LUBRICATION USED IN THE MANUFACTURING PROCESS.
- 4.) WIRE RANGE: 18-14 AWG.

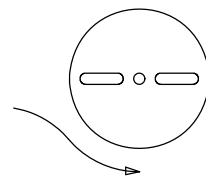


| P/C | DESCRIPTION | DIM 'X' | MAT'L | UL | SP |
|-------|-------------|---------|--------|----|----|
| 04070 | S215-4-HB | .119 | NOTE 1 | X | X |
| 04074 | S215-6-HB | .145 | NOTE 1 | X | X |
| 04075 | S215-6-THB | .145 | NOTE 2 | X | X |
| 04080 | S215-4-THB | .119 | NOTE 2 | X | X |
| 04110 | S215-8-HB | .171 | NOTE 1 | X | X |
| 04120 | S215-8-THB | .171 | NOTE 2 | X | X |
| 04130 | S215-10-HB | .197 | NOTE 1 | X | X |
| 04140 | S215-10-THB | .197 | NOTE 2 | X | X |

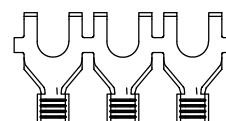
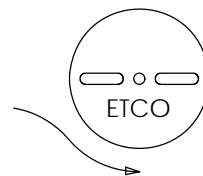
| Rev. | Description of Change/ SCN# | Date |
|------|---|---------|
| 1 | SCN# 102104 SCJ ORG.ENG.DWG.DATE: 12-21-92 | 1-13-03 |
| 2 | ADDED P/Cs SCN#140162 SCJ | 8-29-07 |



DIRECTION EXITING TOOL,
EARS UP, TO THE BACK



DIRECTION TOWARD APPLICATOR,
EARS UP, TO THE FRONT



UNCONTROLLED COPY

| | | | | |
|---|---------------------------------|---|----------------------------|--------------------------|
| <p>THIRD ANGLE PROJECTION TOLERANCES UNLESS OTHERWISE SPECIFIED INCHES: .XX - ±.030 .XXX - ±.015 ANGLES: ±5°</p> | <p>TOOL NO. 0634</p> | <p>Title: SPADE TERMINAL</p> | | |
| | | <p>DO NOT SCALE DWG.</p> | <p>Drawn By: S.JOHNSON</p> | <p>Date: 1-13-03</p> |
| <p>ETCO Incorporated Engineered Products 25 Bellows Street Warwick, RI 02888 Phone: (401) 467-2400 Fax: (401) 467-9230 www.ETCO.com</p> | | <p>Chk'd/App'd By:</p> | <p>Scale: 10X</p> | <p>Size B</p> |
| | | <p>Dwg. No.: S215 cust</p> | | |