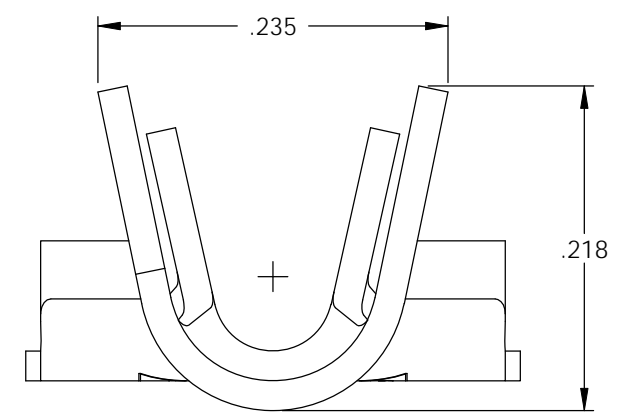
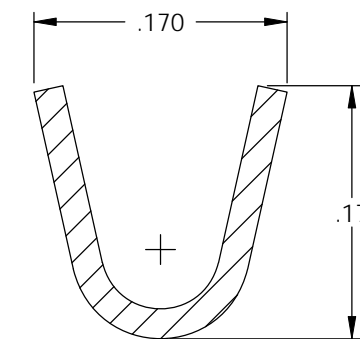
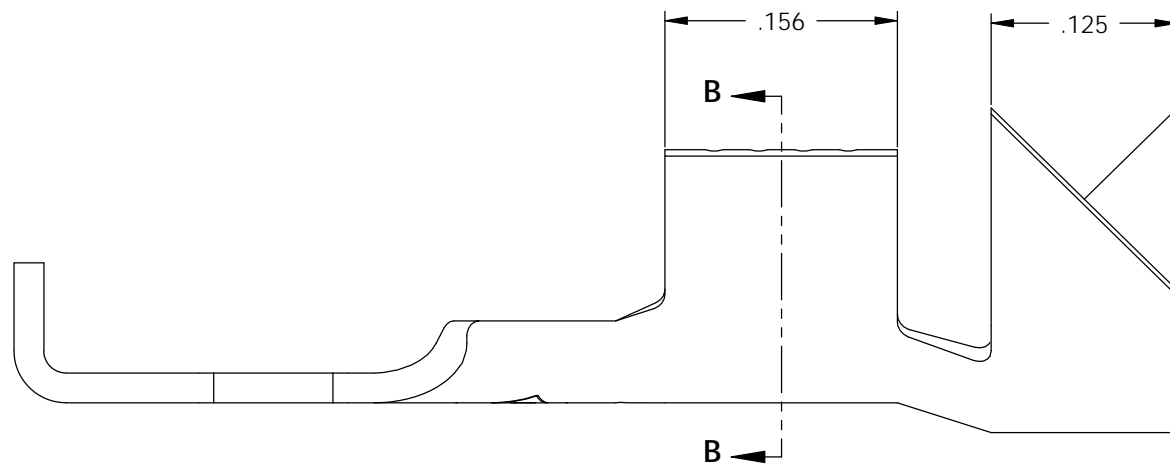
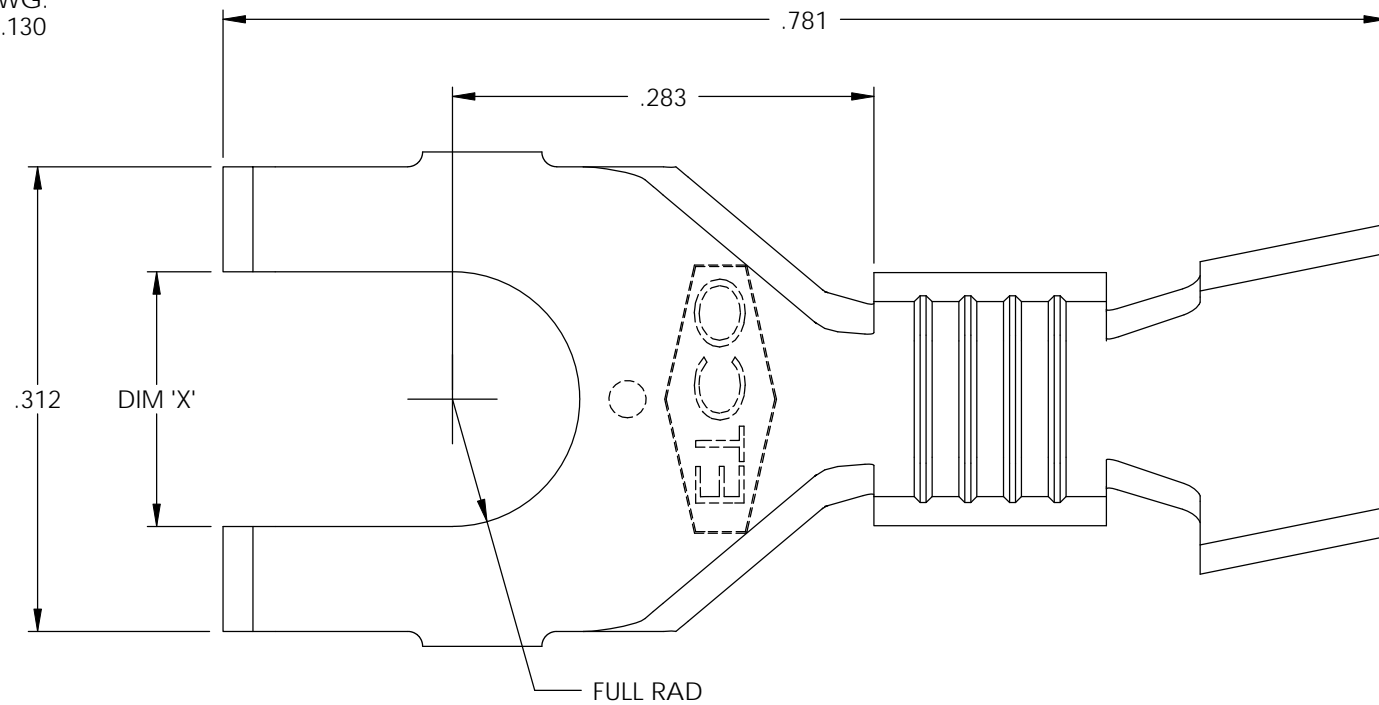


NOTE :

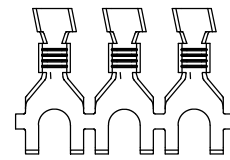
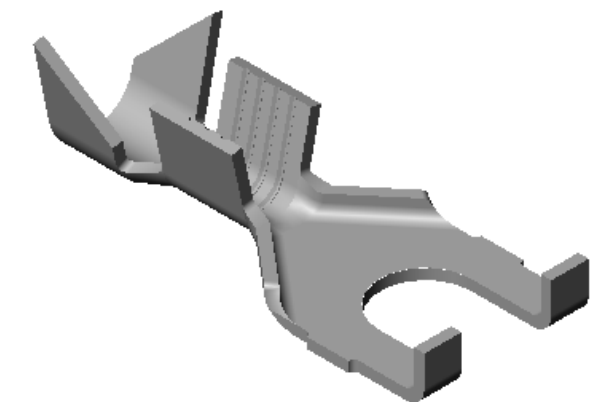
- 1.) MAT'L: .020 THK., BRASS,
#2 TEMPER (HALF HARD),
PER ETCO METAL CODE NO. 00420.
- 2.) MAT'L: .020 THK., PRE-TINNED BRASS,
#2 TEMPER (HALF HARD),
PER ETCO METAL CODE NO. 01480.
- 3.) PARTS MAY BE COATED WITH A LIGHT
FILM OF LUBRICATION USED IN THE
MANUFACTURING PROCESS.
- 4.) WIRE RANGE: 18-14 AWG.
- 5.) INSUL RANGE: \varnothing .090-.130



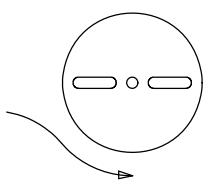
SECTION B-B
SCALE 8 : 1

P/C	DESCRIPTION	DIM 'X'	MAT'L	UL	CSA
04230	S225-4-HB	.119	NOTE 1	X	X
04240	S225-4-THB	.119	NOTE 2	X	X
04250	S225-6-HB	.145	NOTE 1	X	X
04260	S225-6-THB	.145	NOTE 2	X	X
04270	S225-8-HB	.171	NOTE 1	X	X
04280	S225-8-THB	.171	NOTE 2	X	X
04290	S225-10-HB	.197	NOTE 1	X	X
04300	S225-10-THB	.197	NOTE 2	X	X

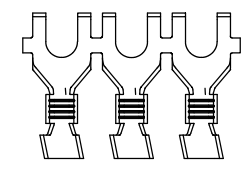
Rev.	Description of Change/ SCN#	Date
1	SCN# 102104 SCJ ORG.ENG.DWG.DATE: 12-12-92	1-13-03
2	ADDED P/Cs SCN#140162 SCJ	8-29-07



DIRECTION EXITING TOOL,
EARS UP, TO THE BACK



DIRECTION TOWARD APPLICATOR,
EARS UP, TO THE FRONT



UNCONTROLLED COPY

<p>THIRD ANGLE PROJECTION TOLERANCES UNLESS OTHERWISE SPECIFIED INCHES: .XX - \pm.030 .XXX - \pm.015 ANGLES: $\pm 5^\circ$</p>	<p>TOOL NO. 0634</p>	<p>Title: SPADE TERMINAL</p>		
		<p>DO NOT SCALE DWG.</p>	<p>Drawn By: S.JOHNSON</p>	<p>Date: 1-13-03</p>
<p>ETCO Incorporated Engineered Products 25 Bellows Street Warwick, RI 02888 Phone: (401) 467-2400 Fax: (401) 467-9230 www.ETCO.com</p>		<p>Chk'd/App'd By:</p>	<p>Scale: 8X</p>	<p>Size B</p>
		<p>Dwg. No.: S225 cust</p>		