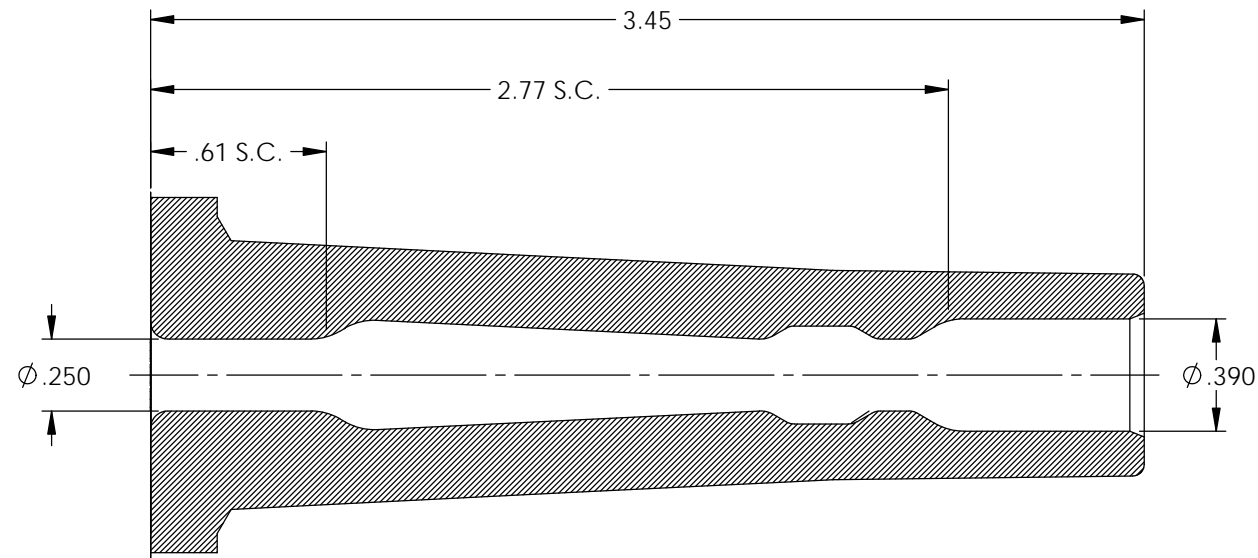


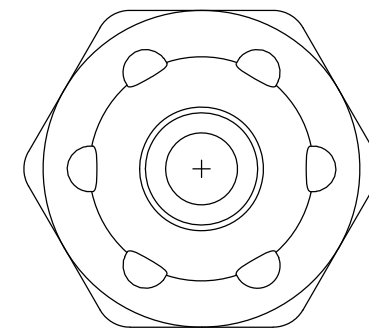
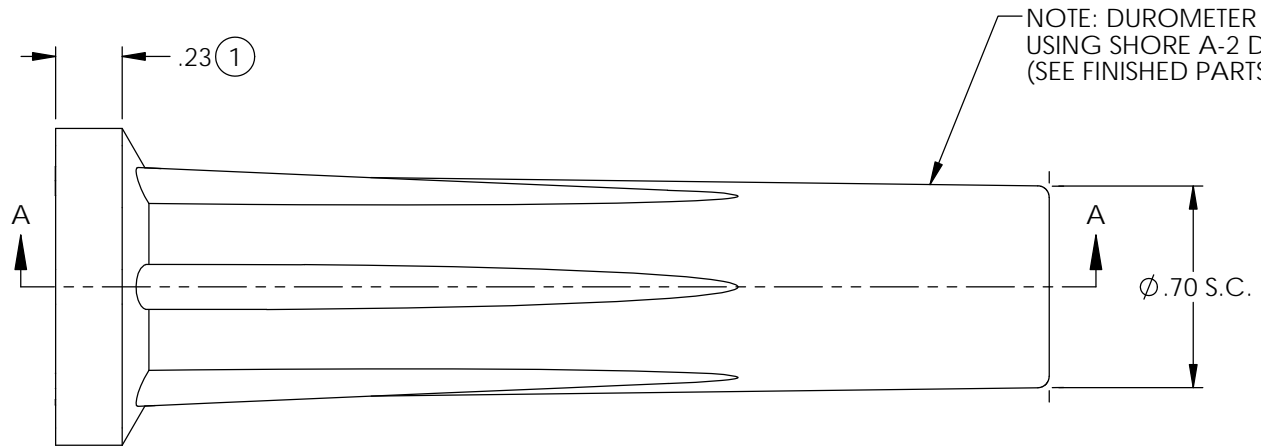
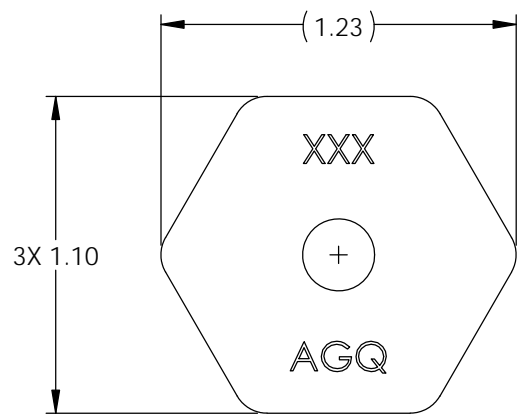
P/C	DESCRIPTION	COLOR	MATERIAL	TEMPERATURE
16012	SB2-OS	ORANGE	SILICONE	400°
16015	SB2-BS	BLACK	SILICONE	400°
16016	SB2-GS	GREY	SILICONE	400°
16049	SB28-RS	RED	SILICONE	400°
16113	SB2-GS/HT	GREY	SILICONE	500°
16129	SB2-VS/RB-2752	ROYAL BLUE	SILICONE	400°
16130	SB2-VS/LB-3752	LIGHT BLUE	SILICONE	400°
16145	SB2-BRS/HT	BROWN	SILICONE	500°

Rev.	Description of Change/ SCN#	Date
1	ECR# 5661 SCJ Redraw in SW from ACAD Org.Eng.Dwg.Date: 12/13/89	8/01/19

NOTE:
FOR MAXIMUM PERFORMANCE AND RELIABILITY,
ALWAYS USE ETCO ENGINEERED IGNITION TERMINALS
WITH ETCO AUTOMOTIVE INSULATORS.



SECTION A-A



UNCONTROLLED COPY

<p>THIRD ANGLE PROJECTION TOLERANCES UNLESS OTHERWISE SPECIFIED INCHES: .XX - ±.030 .XXX - ±.015 ANGLES: ±2°</p>	<p>TOOL NO. 2077</p>	<p>Title: Straight Boot; 7mm or 8mm</p>		
		<p>DO NOT SCALE DWG.</p>	<p>Drawn By: S.Johnson</p>	<p>Date: 7/24/19</p>
<p>ETCO Incorporated Engineered Products 25 Bellows Street Warwick, RI 02888 Phone: (401) 467-2400 Fax: (401) 467-9230 www.ETCO.com</p>		<p>Design Control By: ETCO</p>	<p>Scale: 2X</p>	<p>Size B</p>
		<p>Dwg. No.: SB2 cust</p>		