

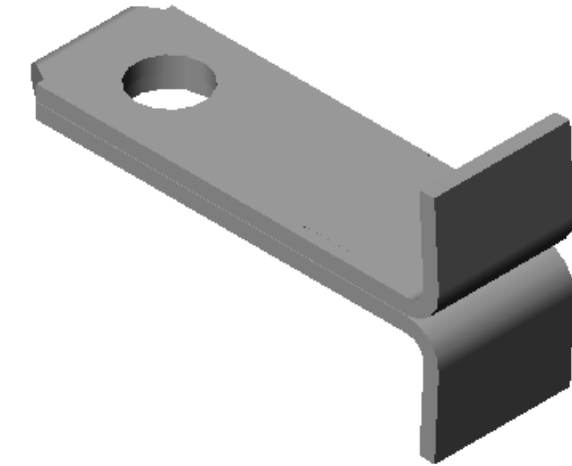
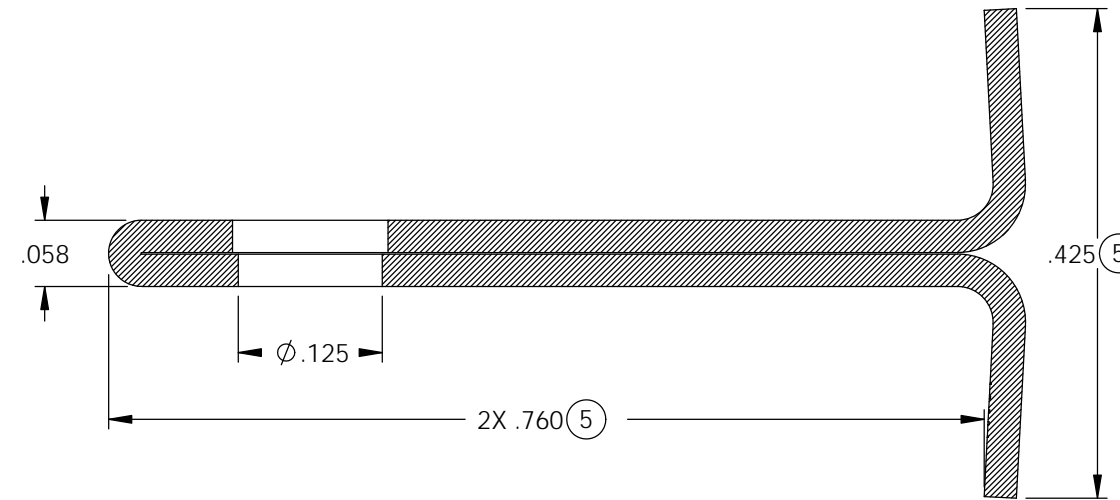
NOTES:

1. MATERIAL: .028 THICK C26000 BRASS; 1/2 HARD ANNEALED TO TEMPER; PER ETCO METAL CODE 1-0714. (4)

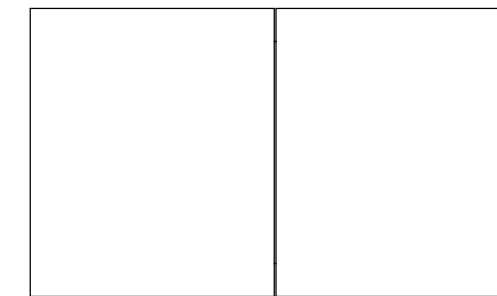
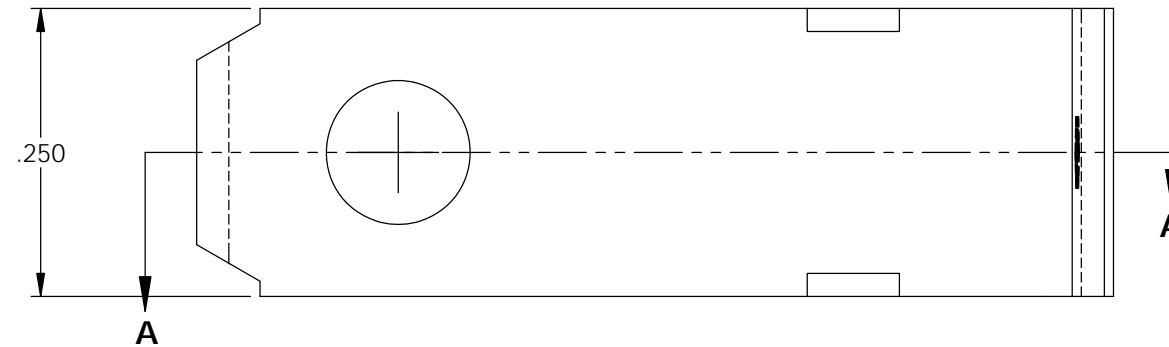
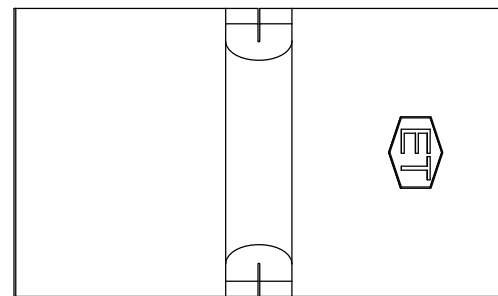
2. MATERIAL: .028 THICK, PRE-TINNED C26000 BRASS; 1/2 HARD, ANNEALED TO TEMPER; PER ETCO METAL CODE 1-1689. (4)

P/C	DESCRIPTION	MAT'L
14246	SB511794-HB	NOTE 1
14245	SB511794-THB	NOTE 2

Rev.	Description of Change/ SCN#	Date
2	TRANSFER FROM CP TO EP	9/4/03
3	SCN# 140161 SCJ	4-23-07
4	ECR# 2893 SCJ	3/20/14
5	ECR# 2912 SCJ	3/31/14



SECTION A-A
SCALE 6 : 1



UNCONTROLLED COPY

<p>THIRD ANGLE PROJECTION TOLERANCES UNLESS OTHERWISE SPECIFIED INCHES: .XX - ±.030 .XXX - ±.015 ANGLES: ±5°</p>	<p>TOOL NO. 0886</p>	<p>Title: BLADE CONTACT</p>		
		<p>DO NOT SCALE DWG.</p>	<p>Drawn By: S.JOHNSON</p>	<p>Date: 10-29-04</p>
<p>ETCO Incorporated Engineered Products 25 Bellows Street Warwick, RI 02888 Phone: (401) 467-2400 Fax: (401) 467-9230 www.ETCO.com</p>		<p>Chk'd/App'd By:</p>	<p>Scale: 6X</p>	<p>Size B</p>
<p>Dwg. No.: SB511794 cust</p>				