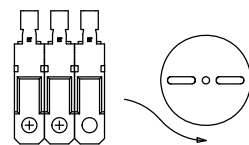
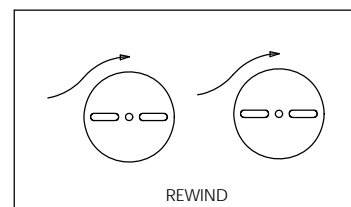
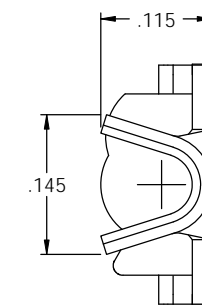
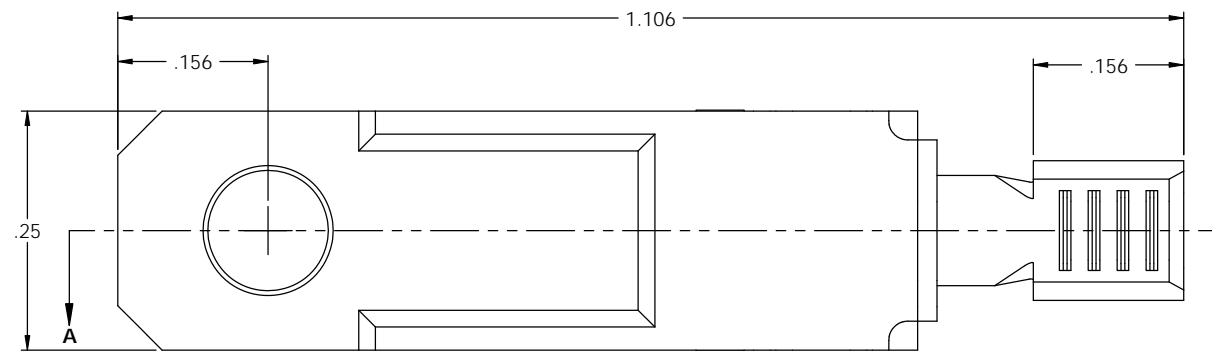
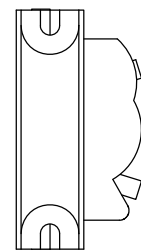
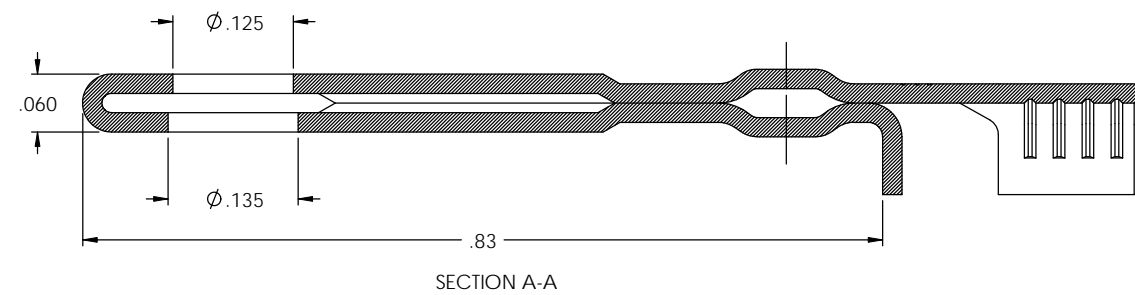
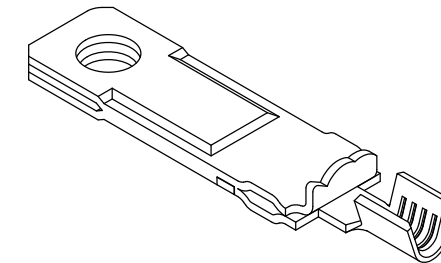
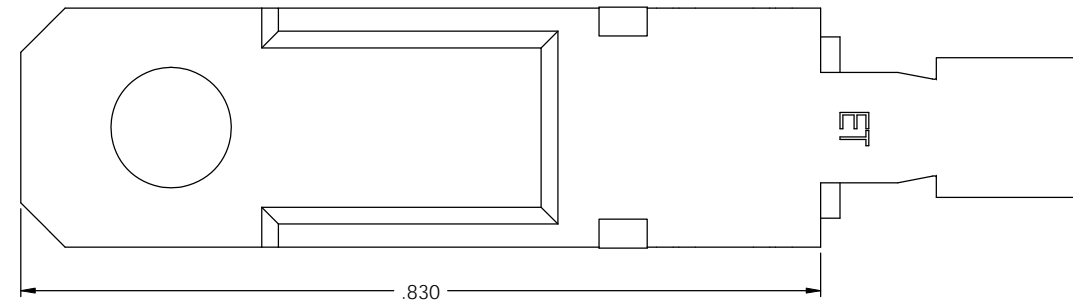


NOTES:

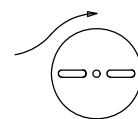
1. MATERIAL: .020 THICK C26000 BRASS; 1/2 HARD  
ANNEALED TO TEMPER; PER ETCO METAL CODE 00093.
2. WIRE RANGE: 18-20 AWG

P/C	DESCRIPTION	MAT'L
14163	SH817S1*ARB-HB	NOTE 1

Rev.	Description of Change/ SCN#	Date
1	TRANSFERED FROM CP SCJ	8-28-08



DIRECTION EXITING TOOL  
EARS DOWN, TO THE BACK



DIRECTION TOWARDS APPLICATOR  
EARS UP, TO THE FRONT

**UNCONTROLLED COPY**

 THIRD ANGLE PROJECTION	TOOL NO.	Title: NON-POLARIZED BLADE		
	0882	DO NOT SCALE DWG.	Drawn By: S.JOHNSON	Date: 8-28-08
TOLERANCES UNLESS OTHERWISE SPECIFIED INCHES: XX - ±.030 XXX - ±.015 ANGLES: ±5°	 ETCO	ETCO Incorporated Engineered Products 25 Bellows Street Warwick, RI 02888 Phone: (401) 467-2400 Fax: (401) 467-9230 www.ETCO.com	Chk'd/App'd By:	Scale: 4X Size: C
		Dwg. No.: SH817S1 cust		