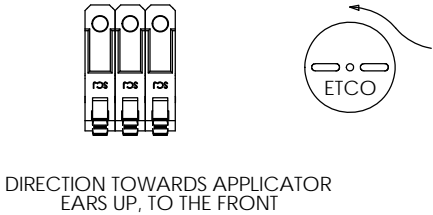
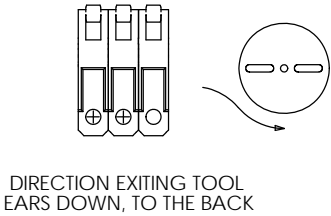
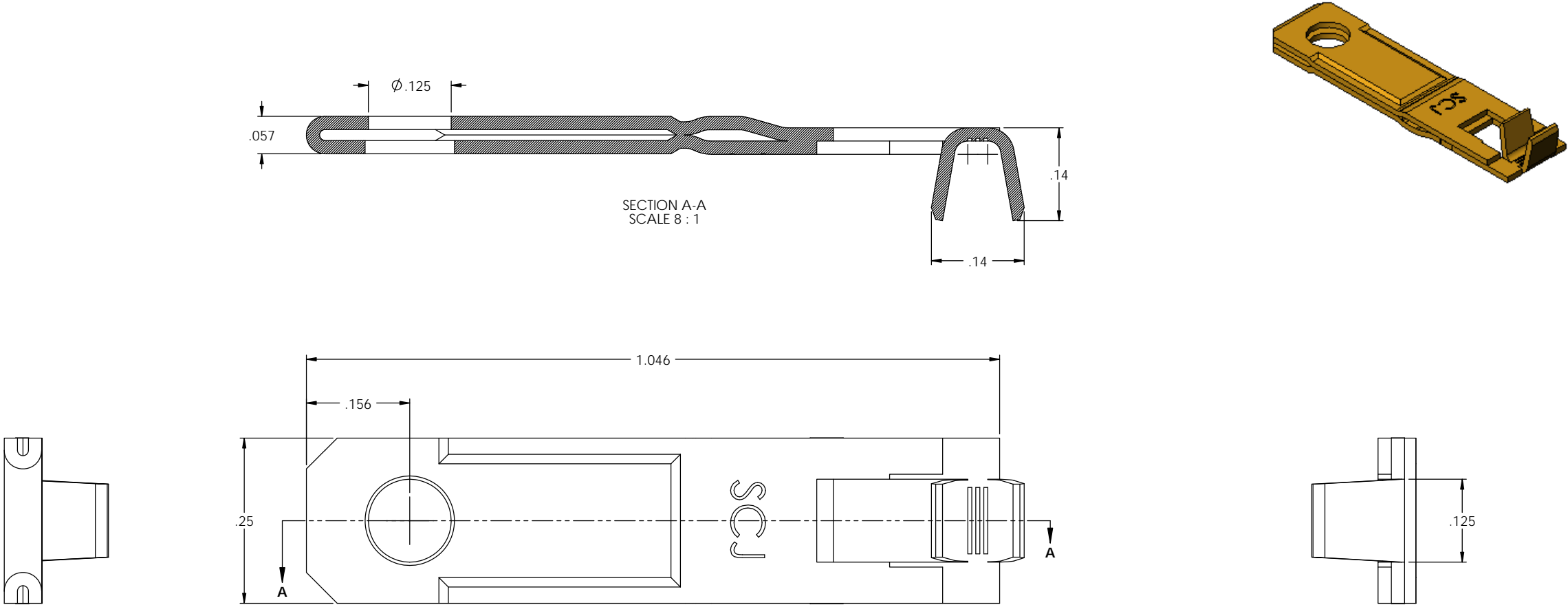




- NOTES:
- 1. MATERIAL: .020 THICK C26000 BRASS; 1/2 HARD
ANNEALED TO TEMPER; PER ETCO METAL CODE 04560.
 - 2. PARTS MAY BE COATED WITH A LIGHT FILM OF LUBRICATION
USED IN THE MANUFACTURING PROCESS.
 - 3. WIRE RANGE: #22 AWG.

P/C	DESCRIPTION ②	MAT'L
14317	SQRA-A-HB	NOTE 1

Rev.	Description of Change/ SCN#	Date
1	TRANSFERED FROM CP SCJ	9-3-08
2	ECR# 816 SCJ	11-1-11



UNCONTROLLED COPY					
 THIRD ANGLE PROJECTION	TOOL NO. 0862	Title: 90° PADDED BLADE			
		DO NOT SCALE DWG.	Drawn By: S.JOHNSON	Date: 9-3-08	
		TOLERANCES UNLESS OTHERWISE SPECIFIED INCHES: .XX - ±.030 .XXX - ±.015 ANGLES: ±5°		Chk'd/App'd By:	Scale: 8X Size C
 ETCO		ETCO Incorporated Engineered Products 25 Bellows Street Warwick, RI 02888 Phone: (401) 467-2400 Fax: (401) 467-9230 www.ETCO.com		Dwg. No.: SQRA cust	