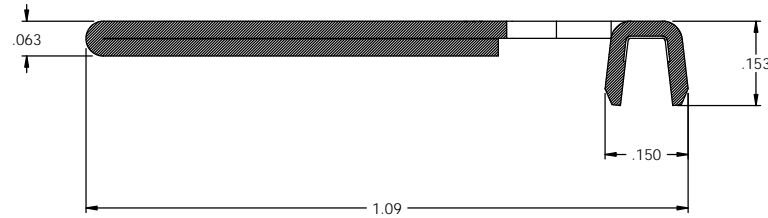
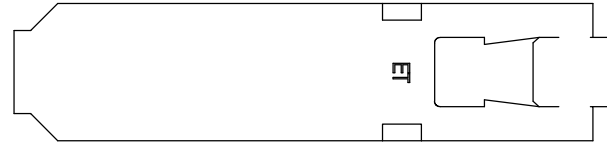


NOTES:

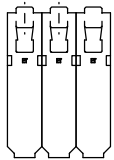
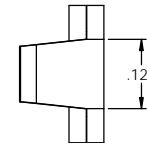
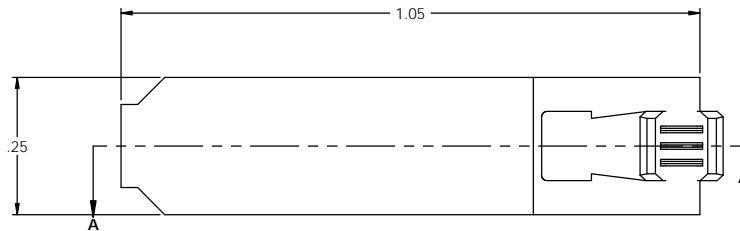
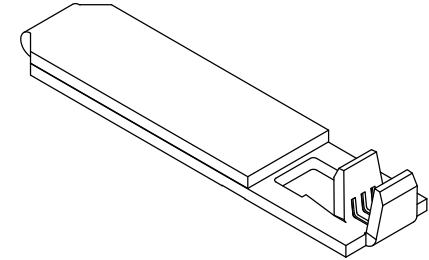
1. MATERIAL: .031 THICK C26000 BRASS 1/2 HARD  
ANNEALED TO TEMPER PER ETCO METAL CODE 00135.
2. FOR WINDING AND REWINDING INSTRUCTIONS SEE PR-3-07.
3. WIRE RANGE: 18 - 16 AWG

P/C	DESCRIPTION	MATERIAL	REWIND
09861	SRA6*A-HB	NOTE 1	NO
09864	SRA6*ARB-HB	NOTE 1	YES

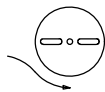
Rev.	Description of Change/ SCN#	Date
1	TRANSFER FROM CP SCJ	9-3-08



SECTION A-A  
SCALE 6 : 1



DIRECTION EXITING TOOL  
EARS DOWN, TO THE REAR  
SEE NOTE 2



**UNCONTROLLED COPY**

 THIRD ANGLE PROJECTION	TOOL NO. <b>0891</b>	Title: <b>RIGHT ANGLE BLADE</b>	
	DO NOT SCALE DWG.	Drawn By: <b>S.JOHNSON</b>	Date: <b>9-3-08</b>
TOLERANCES UNLESS OTHERWISE SPECIFIED INCHES: .XX - ±.030 XXX - ±.015 ANGLES: ±5°		ETCO Incorporated Engineered Products 25 Bellows Street Warwick, RI 02888 Phone: (401) 467-2400 Fax: (401) 467-9230 www.ETCO.com	Chk'd/App'd By: Scale: <b>6X</b> Size: <b>C</b>
		Dwg. No.: <b>SRA6 cust</b>	