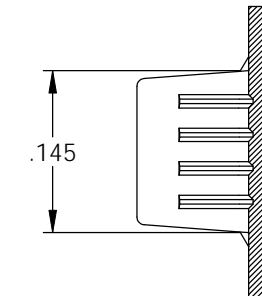
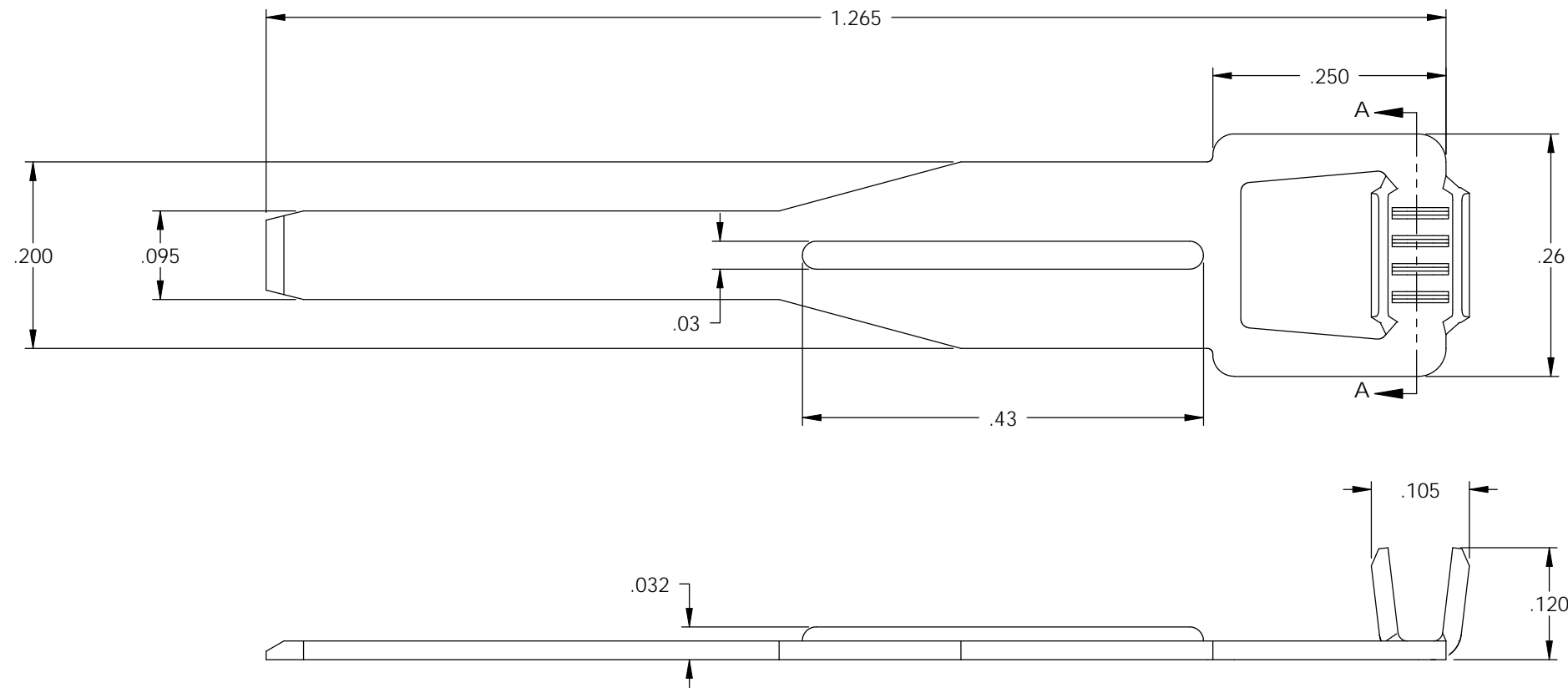


NOTES:

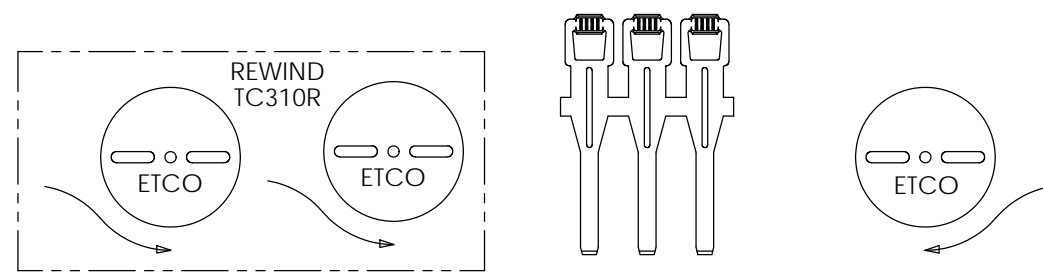
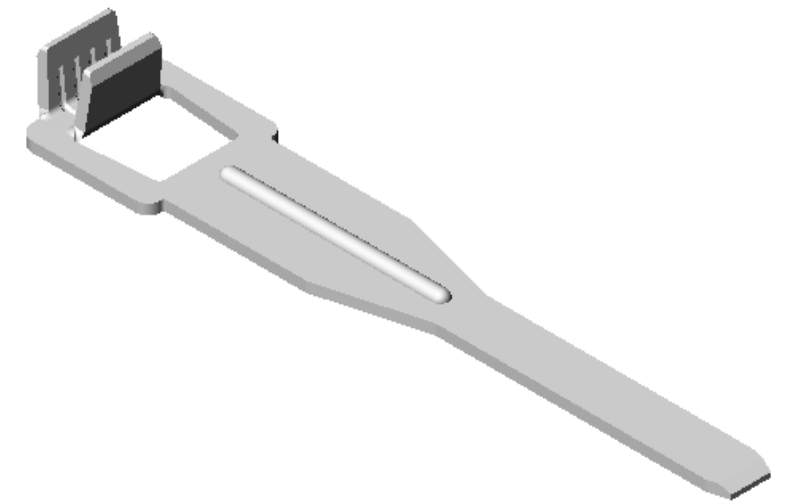
1. MATERIAL: .020 THICK, STAINLESS STEEL, ANNEALED TEMPER, PER ETCO METAL CODE 03719.
2. PARTS MUST MAINTAIN A 35 lbs MIN PULL OFF ON CRIMPED 18 AWG STRANDED WIRE.

P/C	DESCRIPTION	REWIND
09638	TC310R-SS	YES
09703	TC310-SS	NO

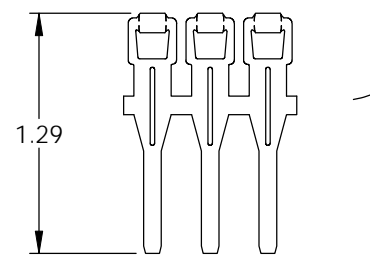
Rev.	Description of Change/ SCN#	Date
1	REDRAWN ON SOLIDWORKS NO CHANGES SCJ ORG.ENG.DWG.DATE: 3-29-78	1-15-08



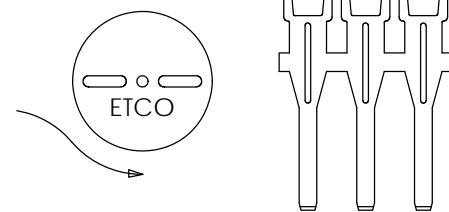
SECTION A-A  
SCALE 6 : 1



TC310R  
DIRECTION TOWARD APPLICATOR, FROM RIGHT, EARS UP, TO THE BACK, AFTER REWIND



DIRECTION EXITING TOOL, EARS DOWN, TO THE BACK



TC310  
DIRECTION TOWARD APPLICATOR, FROM LEFT, EARS UP, TO THE BACK

# UNCONTROLLED COPY

<p>THIRD ANGLE PROJECTION TOLERANCES UNLESS OTHERWISE SPECIFIED INCHES: .XX - ±.030 .XXX - ±.015 ANGLES: ±5°</p>	<p>TOOL NO. <b>0665</b></p>	<p>Title: <b>CONTACT</b></p>		
		<p>DO NOT SCALE DWG.</p>	<p>Drawn By: <b>S.JOHNSON</b></p>	<p>Date: <b>1-15-08</b></p>
<p>ETCO Incorporated Engineered Products 25 Bellows Street Warwick, RI 02888 Phone: (401) 467-2400 Fax: (401) 467-9230 www.ETCO.com</p>		<p>Chk'd/App'd By:</p>	<p>Scale: <b>6X</b></p>	<p>Size <b>B</b></p>
		<p>Dwg. No.: <b>TC310, TC310R cust</b></p>		