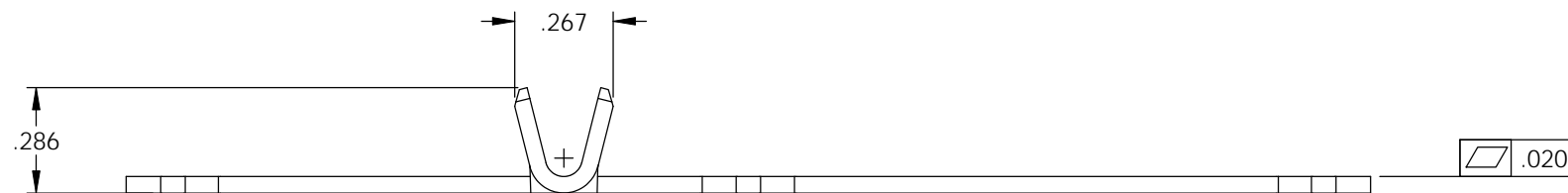
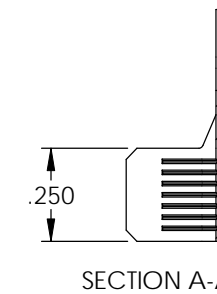
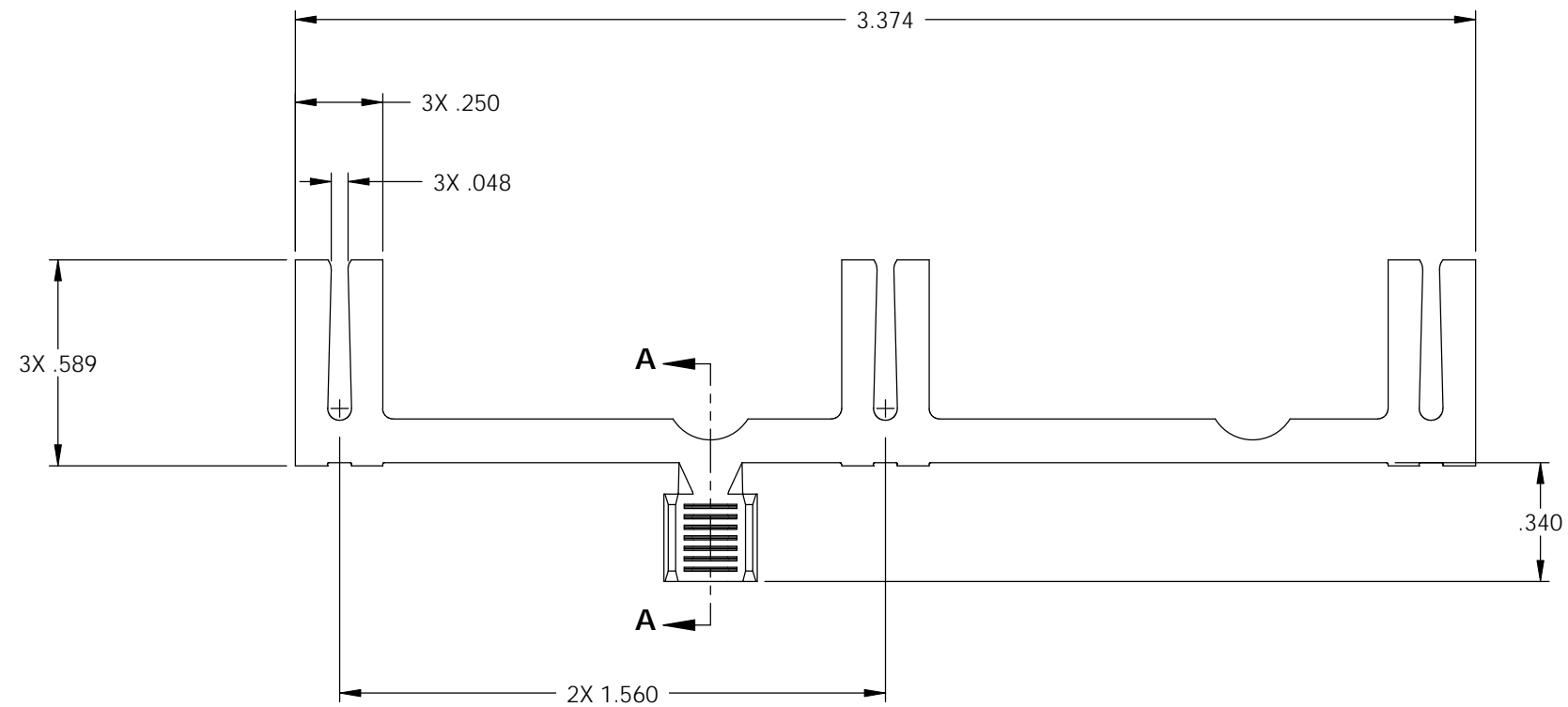


PART CODE	DESCRIPTION	MATERIAL
82214	1156-2-HB	NOTE 1

Rev.	Description of Change/ SCN#	Date
1	TRANSFER FROM CP TO EP	12-17-04
2	SCN# 102848 SCJ	2-15-05



NOTES:

1. MATERIAL: .045 THICK C26000 BRASS; 1/2 HARD, ANNEALED TO TEMPER, PER ETCO METAL CODE 00150.
2. PARTS MAY BE COATED WITH A LIGHT FILM OF LUBRICATION USED IN THE MANUFACTURING PROCESS.
3. WIRE RANGE: #10-#12 AWG.

THIS PRINT IS THE PROPERTY OF ETCO INCORPORATED. NO PART OF THIS DESIGN MAY BE USED IN ANY WAY WITHOUT WRITTEN CONSENT FROM ETCO INCORPORATED.

UNCONTROLLED COPY

<p>THIRD ANGLE PROJECTION TOLERANCES UNLESS OTHERWISE SPECIFIED</p> <p>INCHES: .XX - ±.030 .XXX - ±.015</p> <p>ANGLES - ±5°</p>	<p>TOOL NO.</p> <p>0829</p>	<p>Title:</p> <p>TRIPLE CONNECTOR</p>	
	<p>ETCO</p>	<p>ETCO Incorporated Engineered Products 25 Bellows Street Warwick, R.I. 02888 Phone: (401)467-2400 FAX: (401)467-9230 www.ETCO.com</p>	<p>DO NOT SCALE DWG.</p> <p>Drawn By: S.JOHNSON</p> <p>Chk'd/App'd By:</p> <p>Dwg. No.:</p>