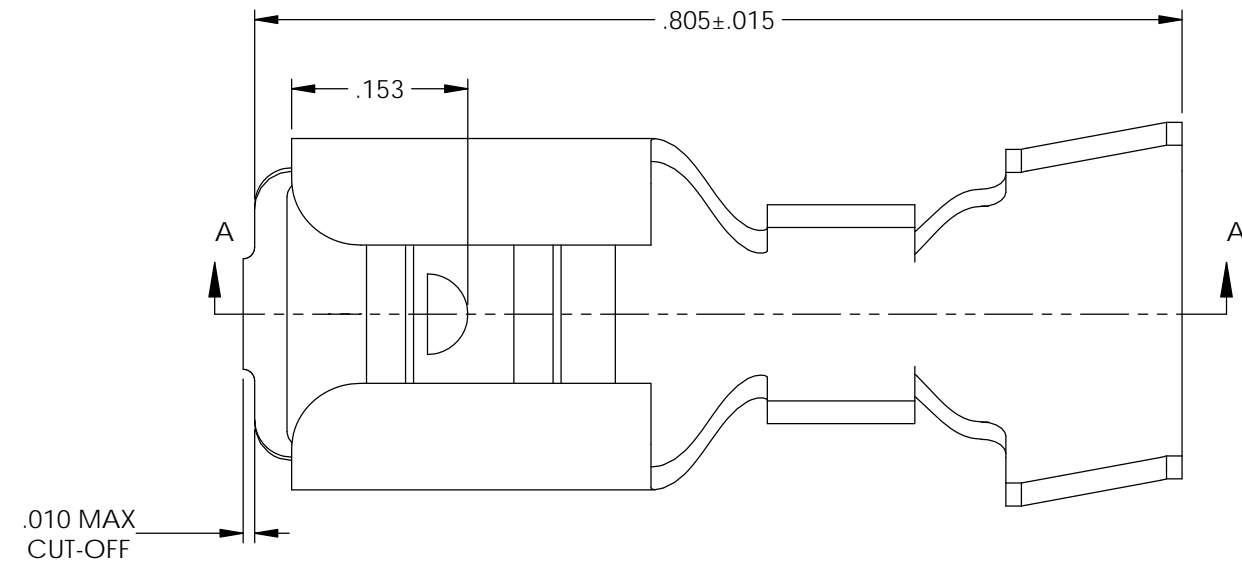


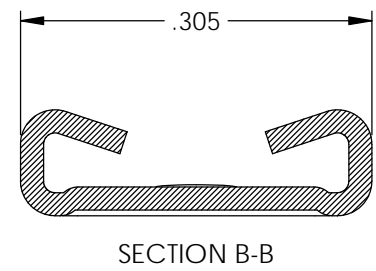
NOTES:

- MATERIAL: .020 THICK BRASS
#2 TEMPER (1/2 HARD)
PER ETCO METAL CODE XXXXX.
- MATERIAL: .020 THICK PRETINNED BRASS
#2 TEMPER (1/2 HARD)
PER ETCO METAL CODE 2-1575.
- MATERIAL: .020 THICK NICKEL PLATED BRASS
#2 TEMPER (1/2 HARD)
PER ETCO METAL CODE XXXXX.
- PARTS MAY BE COATED WITH A LIGHT FILM OF LUBRICATION USED IN THE MANUFACTURING PROCESS.
- INSERTION/WITHDRAWAL FORCES ARE INDICATED ON THE QUALITY INSPECTION PLAN.
- WIRE RANGE: SEE CHART.
- INSULATION DIAMETER RANGE: ϕ .150- ϕ .250.

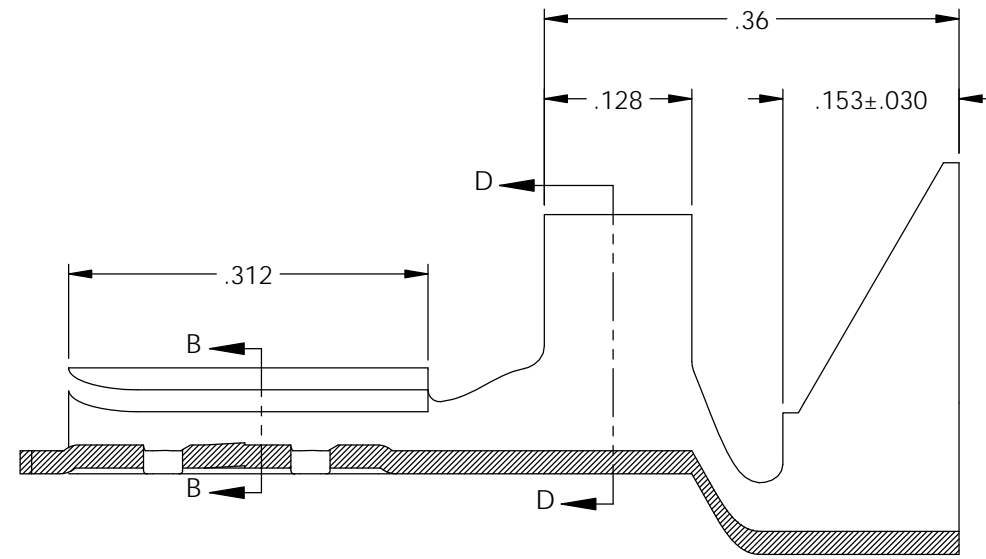
Rev.	Description of Change/ SCN#	Date
-	Approved For Mfg SCJ	8/31/20



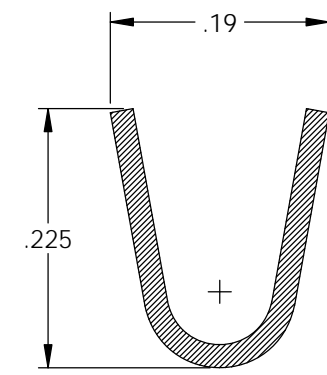
Part Number	Mat'l	Wire Range	UL
3000H 109AB	Note 1	18-10 AWG	X
3000H 109A	Note 2	18-12 AWG	X
3000H 109AN	Note 3	18-12 AWG	X



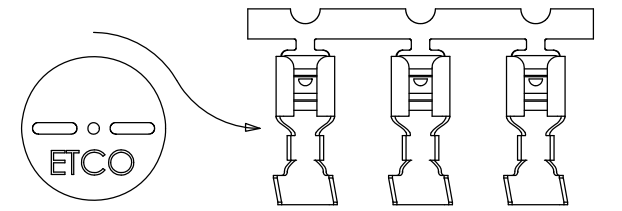
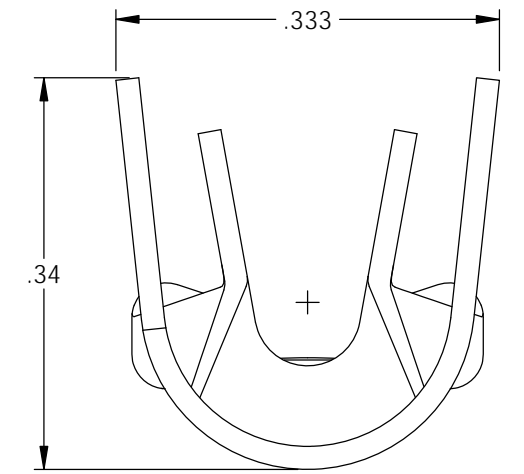
SECTION B-B



SECTION A-A



SECTION D-D



DIRECTION TOWARD APPLICATOR,
EARS UP, TO THE FRONT

UNCONTROLLED COPY

<p>THIRD ANGLE PROJECTION TOLERANCES UNLESS OTHERWISE SPECIFIED INCHES: .XX - ±.030 .XXX - ±.015 ANGLES: ±5°</p>	<p>TOOL NO. 1045</p>	<p>Title: .032 x .250 Female Disconnect</p>		
		<p>DO NOT SCALE DWG.</p>	<p>Drawn By: S.Johnson</p>	<p>Date: 5/07/20</p>
<p>ETCO Incorporated Engineered Products 25 Bellows Street Warwick, RI 02888 Phone: (401) 467-2400 Fax: (401) 467-9230 www.ETCO.com</p>		<p>Design Control By: ETCO</p>	<p>Scale: 6X</p>	<p>Size B</p>
		<p>Dwg. No.: 3000H 109 cust</p>		