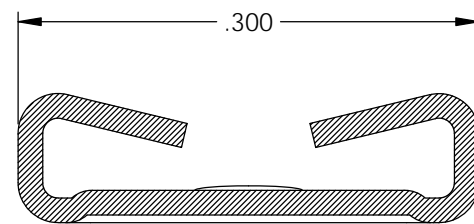
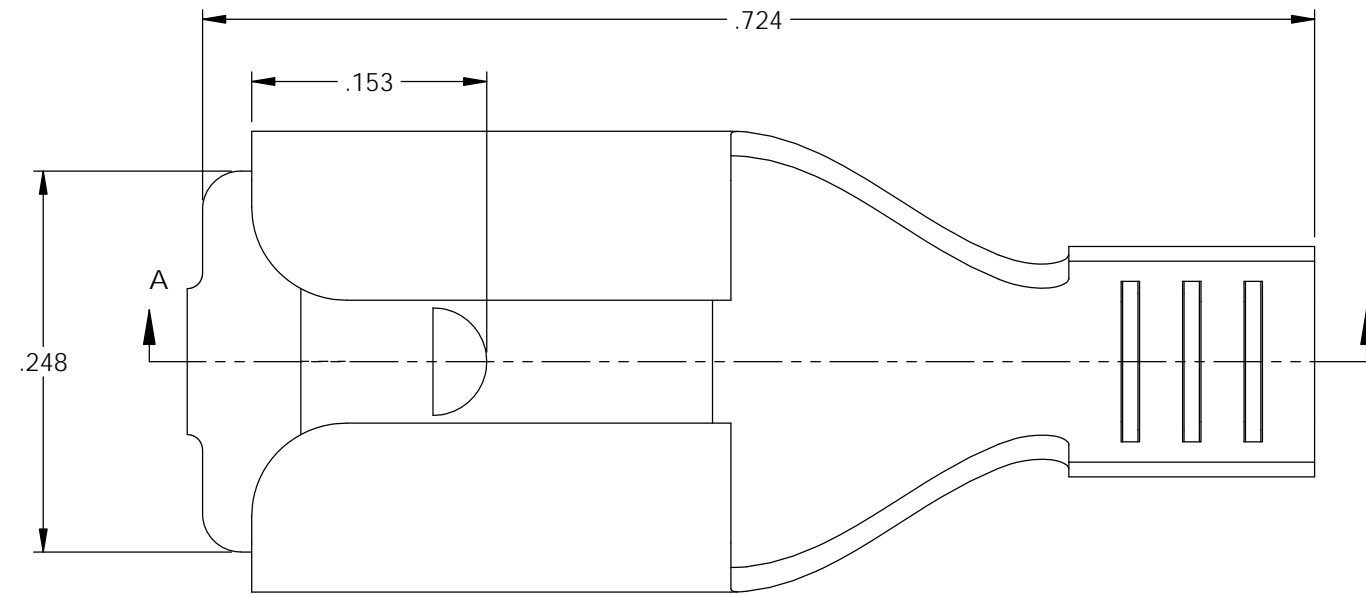


NOTES:

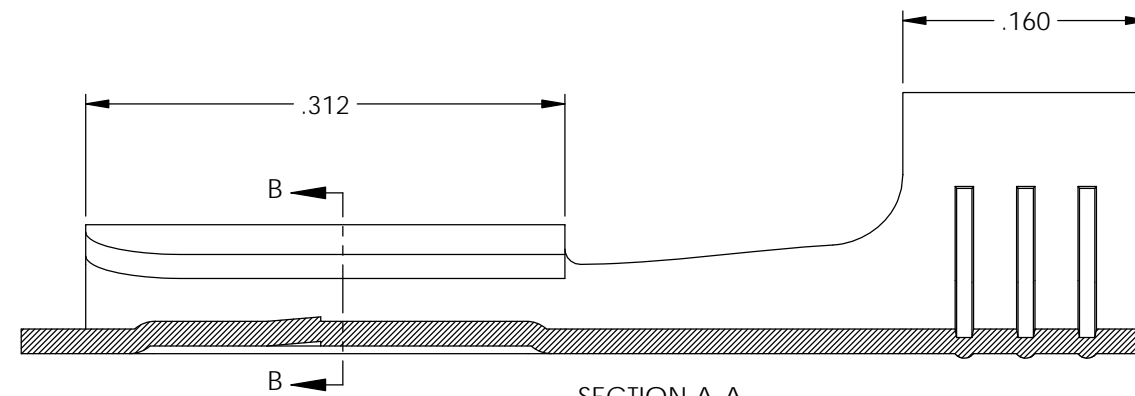
- MATERIAL: .016 THICK BRASS  
#3 TEMPER (3/4 HARD)  
PER ETCO METAL CODE XXXXX.
- MATERIAL: .016 THICK PRETINNED BRASS  
#3 TEMPER (3/4 HARD)  
PER ETCO METAL CODE XXXXX.
- PARTS MAY BE COATED WITH A LIGHT FILM OF LUBRICATION USED IN THE MANUFACTURING PROCESS.
- INSERTION/WITHDRAWAL FORCES ARE INDICATED ON THE QUALITY INSPECTION PLAN.
- WIRE RANGE: 12-14 AWG.

Part Number	Mat'l
3000H 214A-5-2	Note 2
3000H 214AB-5-2	Note 1

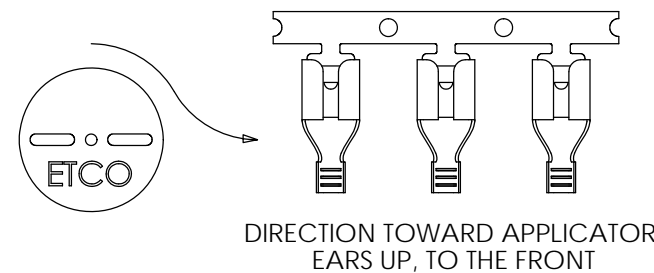
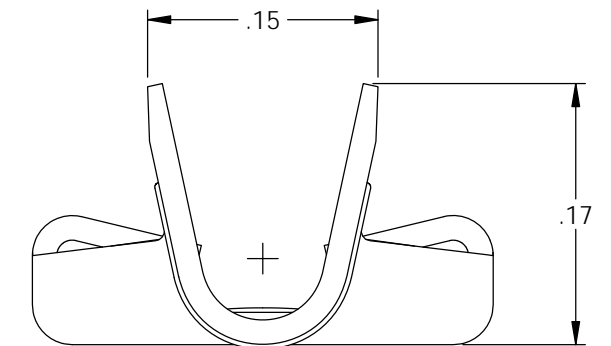
Rev.	Description of Change/ SCN#	Date
A	Approved For Quote SCJ	4/29/20



SECTION B-B



SECTION A-A



THIS PRINT IS THE PROPERTY OF ETCO INCORPORATED. NO PART OF THIS DESIGN MAY BE USED IN ANY WAY WITHOUT WRITTEN CONSENT FROM ETCO INCORPORATED.

# UNCONTROLLED COPY

<p>THIRD ANGLE PROJECTION TOLERANCES UNLESS OTHERWISE SPECIFIED INCHES: .XX - ±.030 .XXX - ±.015 ANGLES: ±5°</p>	<p>TOOL NO. <b>1043</b></p>	<p>Title: .032 x .250 Female Disconnect</p>		
		<p>DO NOT SCALE DWG.</p>	<p>Drawn By: S.Johnson</p>	<p>Date: 4/29/20</p>
<p>ETCO Incorporated Engineered Products 25 Bellows Street Warwick, RI 02888 Phone: (401) 467-2400 Fax: (401) 467-9230 www.ETCO.com</p>		<p>Design Control By: ETCO</p>	<p>Scale: 8X</p>	<p>Size B</p>
<p>Dwg. No.: <b>3000H 214-5-2 cust</b></p>				