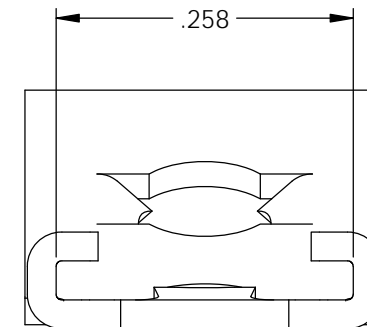
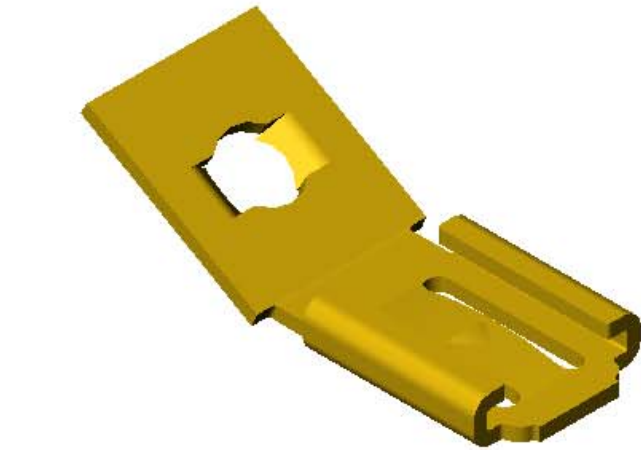
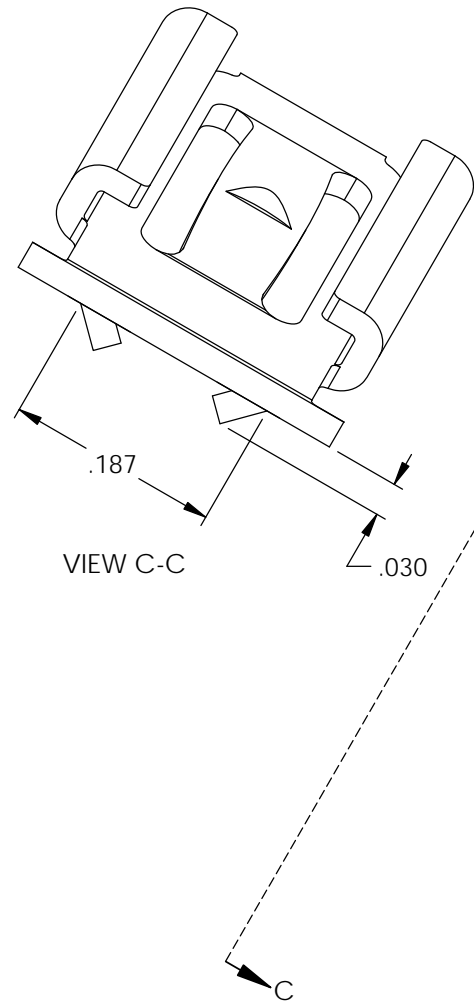
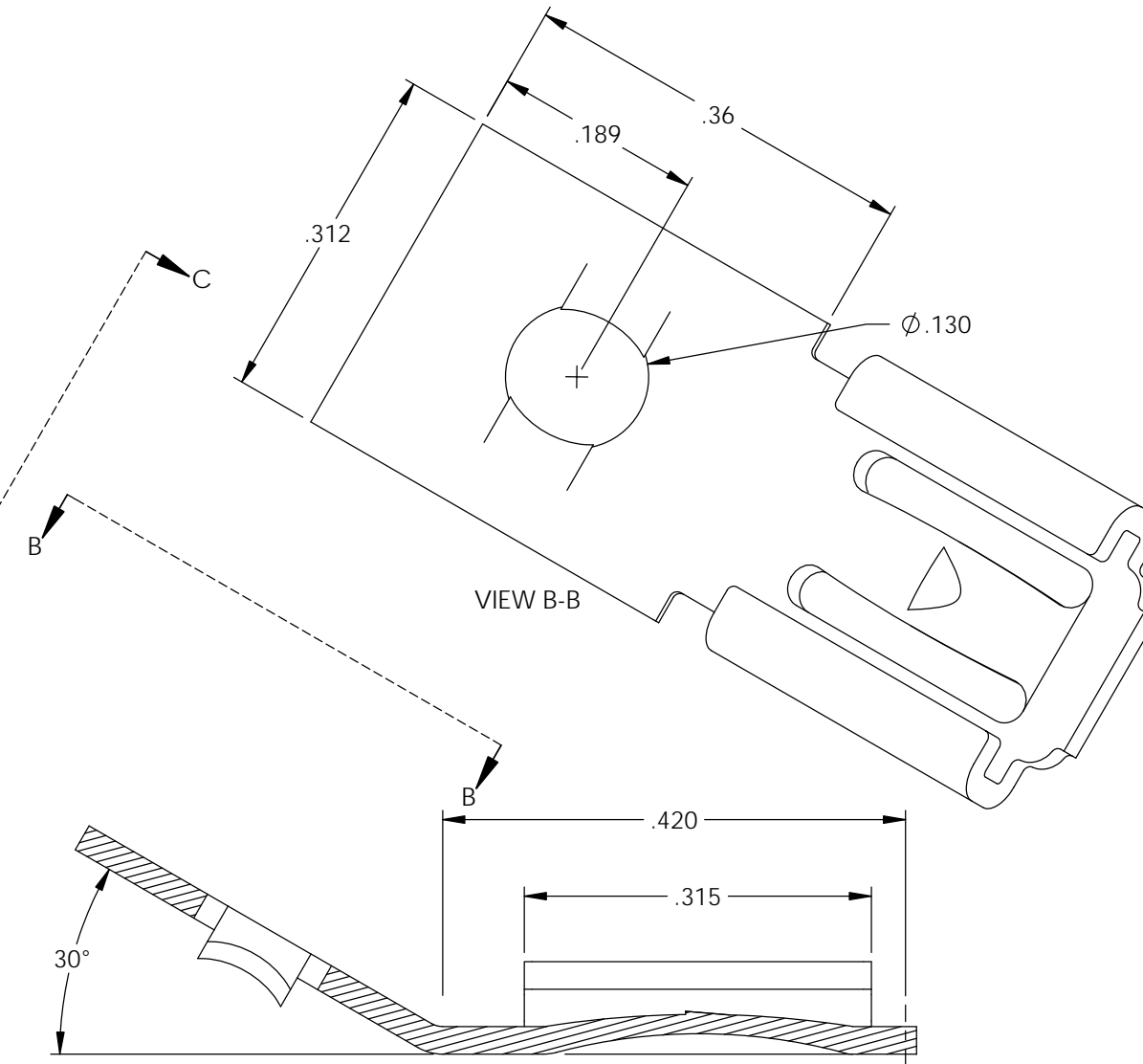
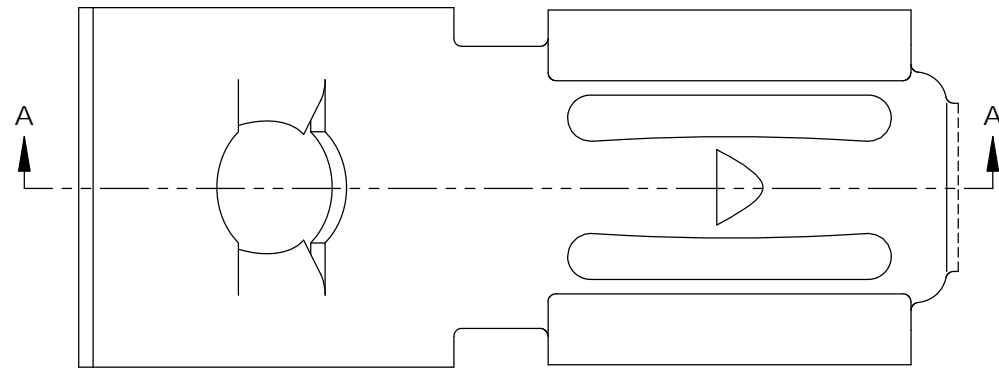



NOTES:

1. MATERIAL: .025 THICK BRASS  
#2 TEMPER (1/2 HARD)  
PER ETCO METAL CODE XXXXX.
2. MATERIAL: .025 THICK PRE-ELECTRO-TINNED BRASS  
#2 TEMPER (1/2 HARD)  
PER ETCO METAL CODE XXXXX.
3. INSERTION/WITHDRAWAL FORCES ARE INDICATED  
ON THE QUALITY INSPECTION PLAN.
4. PARTS ARE PRODUCED IN LOOSE PIECE FORM.

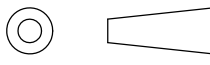



Part Number	Mat'l	
3000H 6A-28	Note 2	X
3000H 6A-28A	Note 1	X

Rev.	Description of Change/ SCN#	Date
A	Approved For Quote SCJ	4/20/20

SECTION A-A

# UNCONTROLLED COPY

 THIRD ANGLE PROJECTION TOLERANCES UNLESS OTHERWISE SPECIFIED INCHES: .XX - ±.030 .XXX - ±.015 ANGLES: ±5°	TOOL NO. <b>1025</b>	Title: .032 x .250 Stationary Female Disconnect	
		DO NOT SCALE DWG. Drawn By: S.Johnson Date: 4/20/20	Design Control By: ETCO Scale: 6X Size B
		Dwg. No.: <b>3000H 6-28 cust</b>	