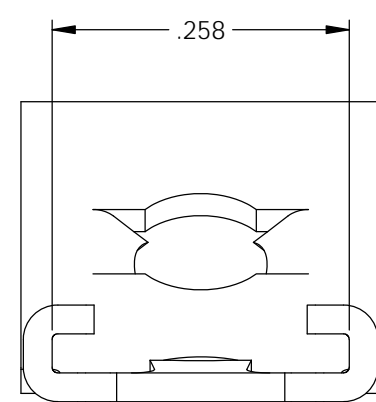
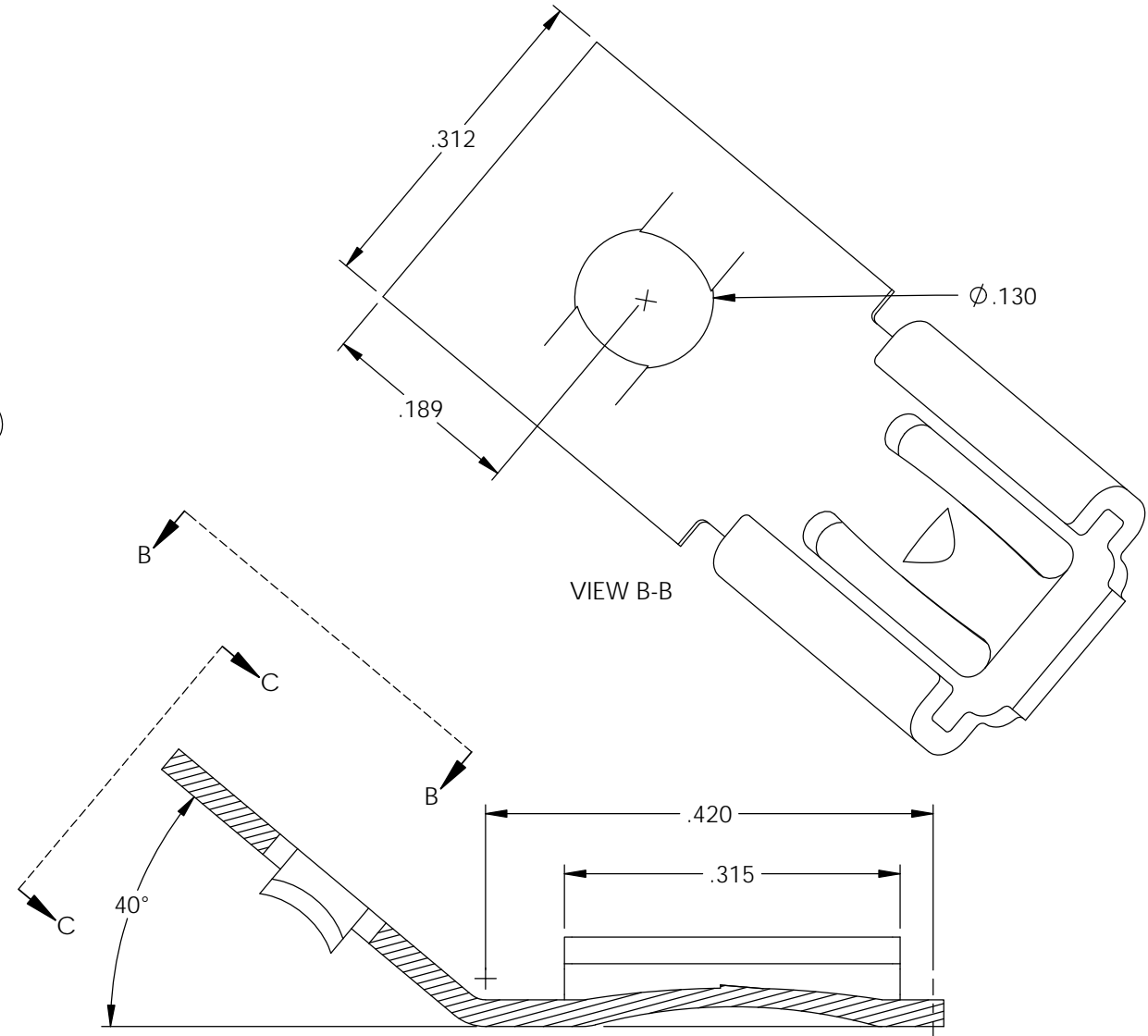
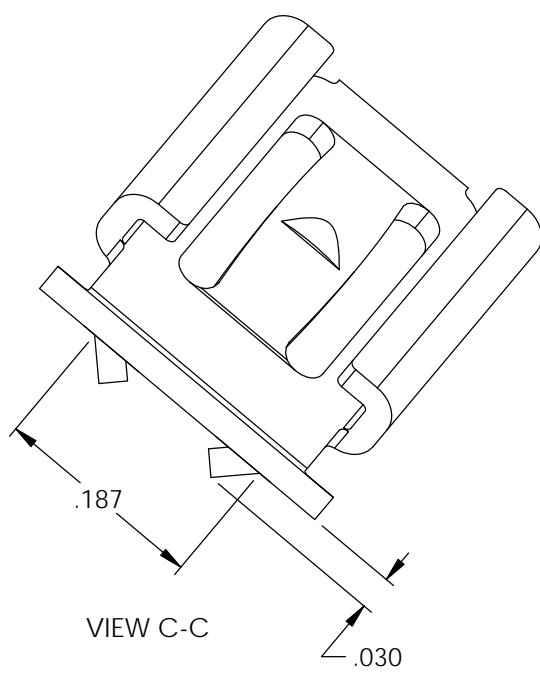
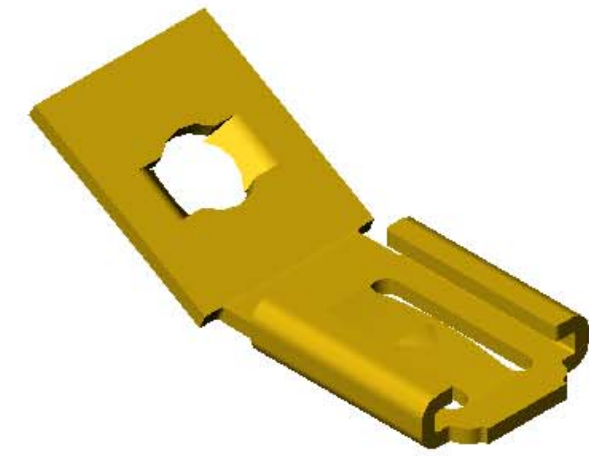
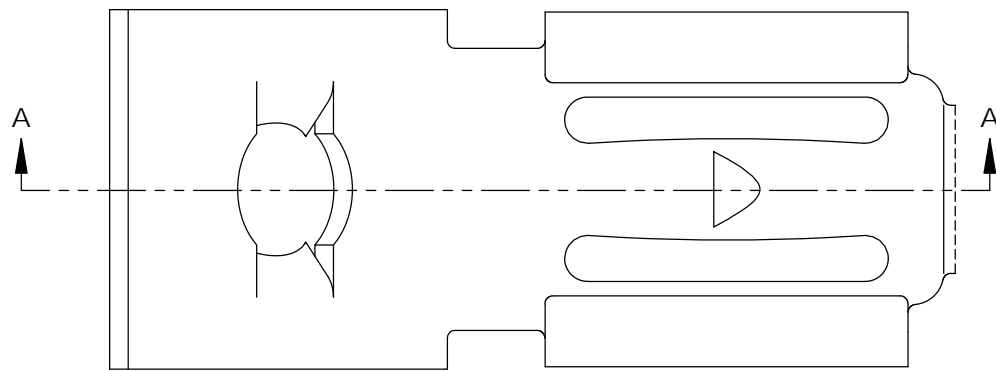


NOTES:

1. MATERIAL: .025 THICK BRASS  
#2 TEMPER (1/2 HARD)  
PER ETCO METAL CODE XXXXX.
2. MATERIAL: .025 THICK PRE-ELECTRO-TINNED BRASS  
#2 TEMPER (1/2 HARD)  
PER ETCO METAL CODE XXXXX.
3. MATERIAL: .025 THICK PRE-NICKEL PLATED BRASS  
#2 TEMPER (1/2 HARD)  
PER ETCO METAL CODE XXXXX.
4. INSERTION/WITHDRAWAL FORCES ARE INDICATED  
ON THE QUALITY INSPECTION PLAN.
5. PARTS ARE PRODUCED IN LOOSE PIECE FORM.

Part Number	Mat'l
3000H 6A-33	Note 1
3000H 6A-33A	Note 2
3000H 6A-33N	Note 3

Rev.	Description of Change/ SCN#	Date
A	Approved For Quote SCJ	4/20/20



SECTION A-A

# UNCONTROLLED COPY

<p>THIRD ANGLE PROJECTION TOLERANCES UNLESS OTHERWISE SPECIFIED INCHES: .XX - ±.030 .XXX - ±.015 ANGLES: ±5°</p>	<p>TOOL NO. <b>1025</b></p>	<p>Title: .032 x .250 Stationary Female Disconnect</p>	
		<p>DO NOT SCALE DWG.</p>	<p>Drawn By: S.Johnson Date: 4/20/20</p>
<p>ETCO Incorporated Engineered Products 25 Bellows Street Warwick, RI 02888 Phone: (401) 467-2400 Fax: (401) 467-9230 www.ETCO.com</p>		<p>Design Control By: ETCO</p>	<p>Scale: 6X Size B</p>
		<p>Dwg. No.:</p>	<p><b>3000H 6-33 cust</b></p>