
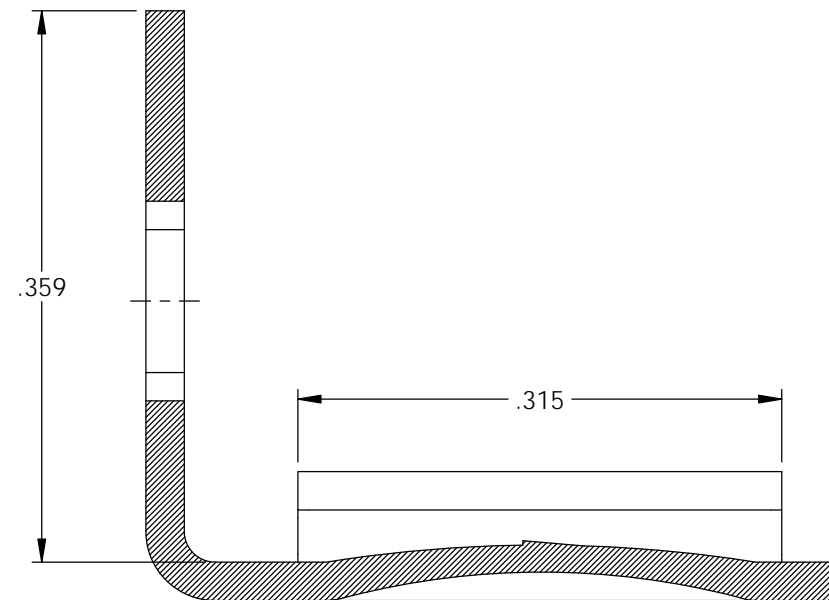
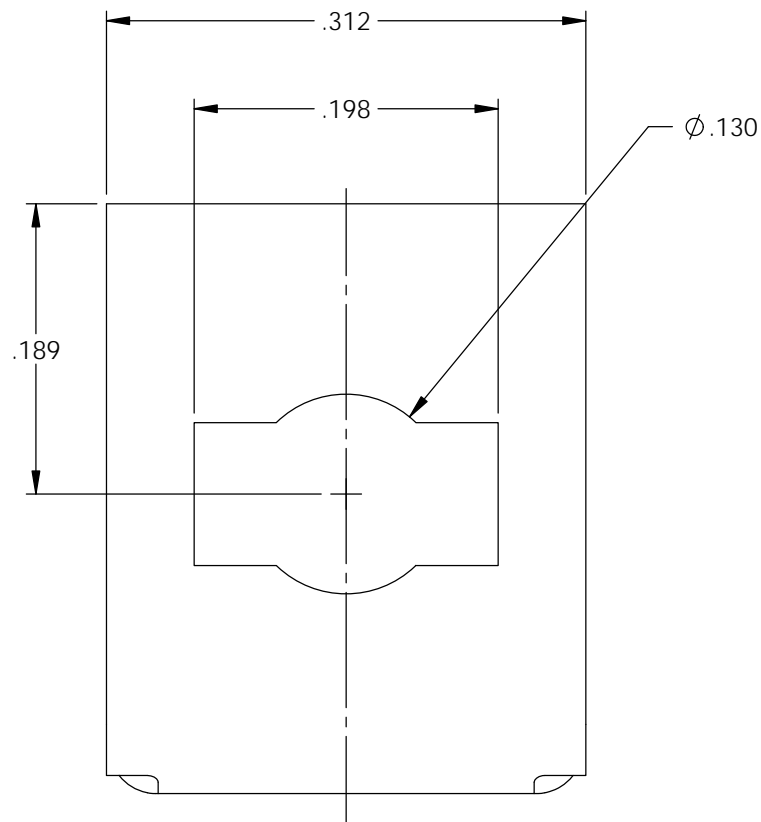
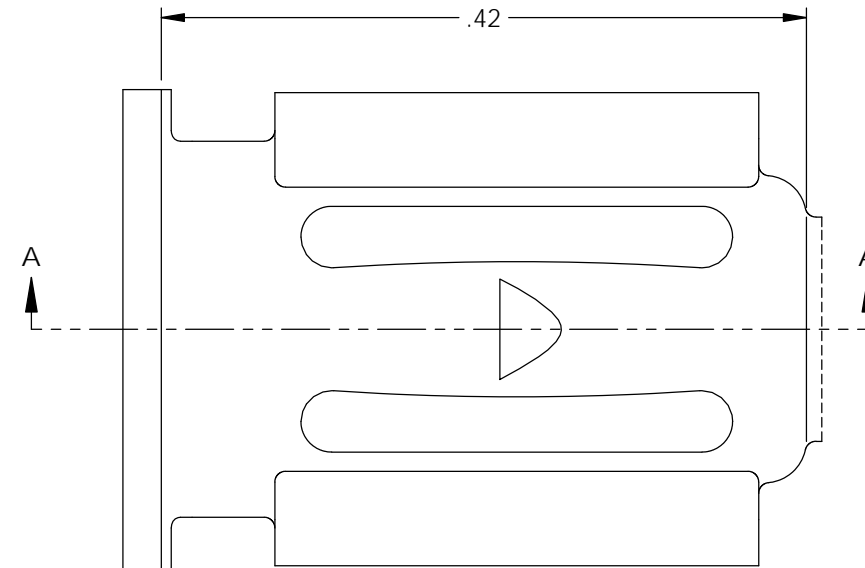


NOTES:

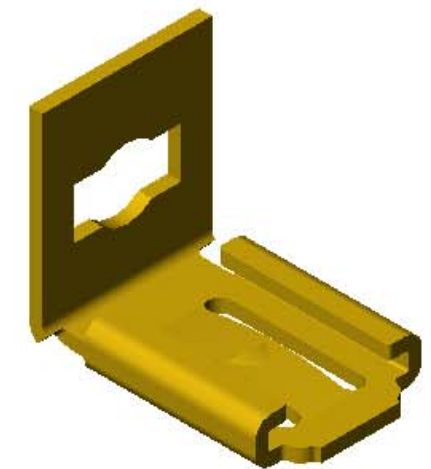
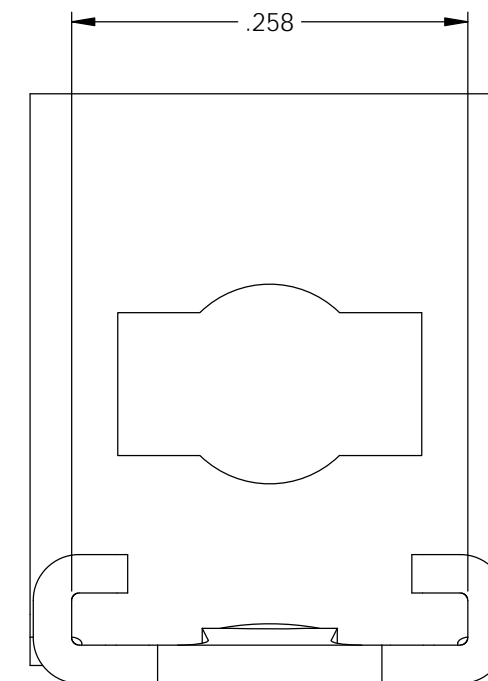
- MATERIAL: .025 THICK BRASS
#2 TEMPER (1/2 HARD)
PER ETCO METAL CODE 2-0661.
- MATERIAL: .025 THICK PRE-ELECTRO-TINNED BRASS
#2 TEMPER (1/2 HARD)
PER ETCO METAL CODE XXXXX.
- INSERTION/WITHDRAWAL FORCES ARE INDICATED
ON THE QUALITY INSPECTION PLAN.
- PARTS ARE PRODUCED IN LOOSE PIECE FORM.

Part Number	Mat'l	
3000H 6-4	Note 1	X
3000H 6-4A	Note 2	X



Rev.	Description of Change/ SCN#	Date
A	Approved For Quote SCJ	4/20/20



SECTION A-A



UNCONTROLLED COPY

 THIRD ANGLE PROJECTION TOLERANCES UNLESS OTHERWISE SPECIFIED INCHES: .XX - ±.030 .XXX - ±.015 ANGLES: ±5°	TOOL NO. 1025	Title: .032 x .250 Stationary Female Disconnect	
		DO NOT SCALE DWG.	Drawn By: S.Johnson Date: 4/20/20
ETCO Incorporated Engineered Products 25 Bellows Street Warwick, RI 02888 Phone: (401) 467-2400 Fax: (401) 467-9230 www.ETCO.com		Design Control By: ETCO	Scale: 8X Size B
Dwg. No.:			3000H 6-4 cust