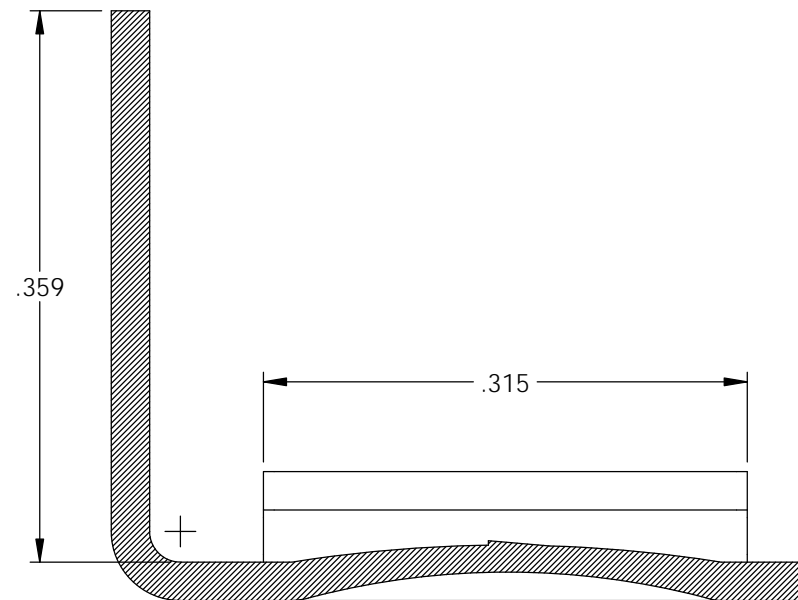
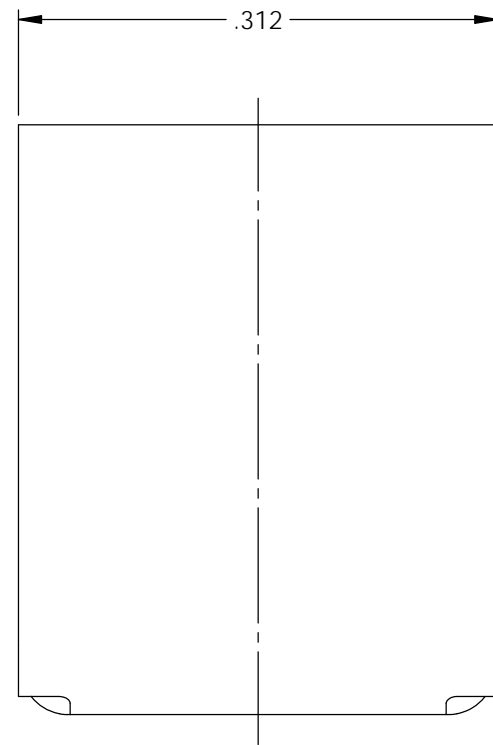
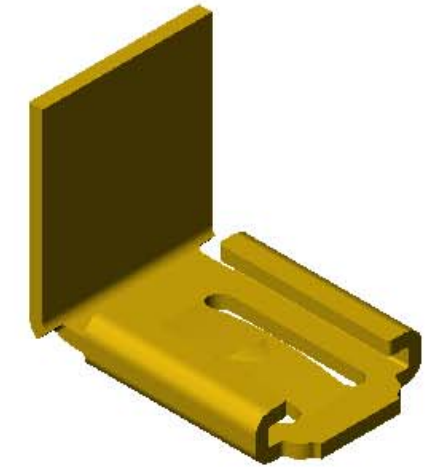
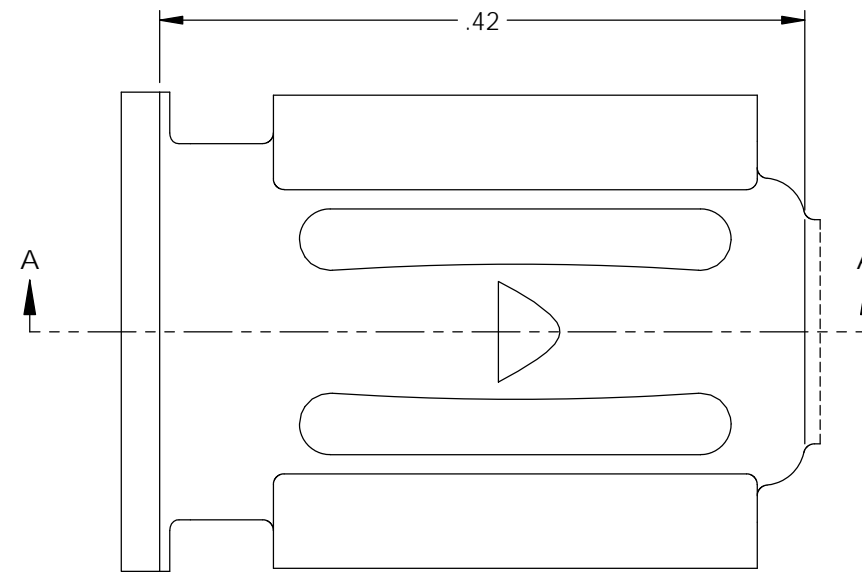


NOTES:

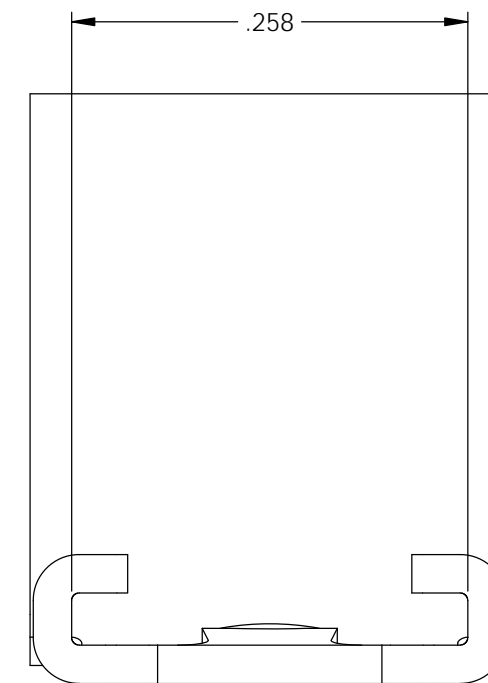
- MATERIAL: .025 THICK BRASS  
#2 TEMPER (1/2 HARD)  
PER ETCO METAL CODE XXXXX.
- INSERTION/WITHDRAWAL FORCES ARE INDICATED  
ON THE QUALITY INSPECTION PLAN.
- PARTS ARE PRODUCED IN LOOSE PIECE FORM.

Part Number	Mat'l
3000H 6-9	Note 1

Rev.	Description of Change/ SCN#	Date
A	Approved For Quote SCJ	4/20/20



SECTION A-A



# UNCONTROLLED COPY

<p>THIRD ANGLE PROJECTION TOLERANCES UNLESS OTHERWISE SPECIFIED INCHES: .XX - ±.030 .XXX - ±.015 ANGLES: ±5°</p>	<p>TOOL NO. <b>1025</b></p>	<p>Title: <b>.032 x .250 Stationary Female Disconnect</b></p>		
		<p>DO NOT SCALE DWG.</p>	<p>Drawn By: <b>S.Johnson</b></p>	<p>Date: <b>4/20/20</b></p>
<p>ETCO Incorporated Engineered Products 25 Bellows Street Warwick, RI 02888 Phone: (401) 467-2400 Fax: (401) 467-9230 www.ETCO.com</p>		<p>Design Control By: <b>ETCO</b></p>	<p>Scale: <b>8X</b></p>	<p>Size <b>B</b></p>
		<p>Dwg. No.: <b>3000H 6-9 cust</b></p>		