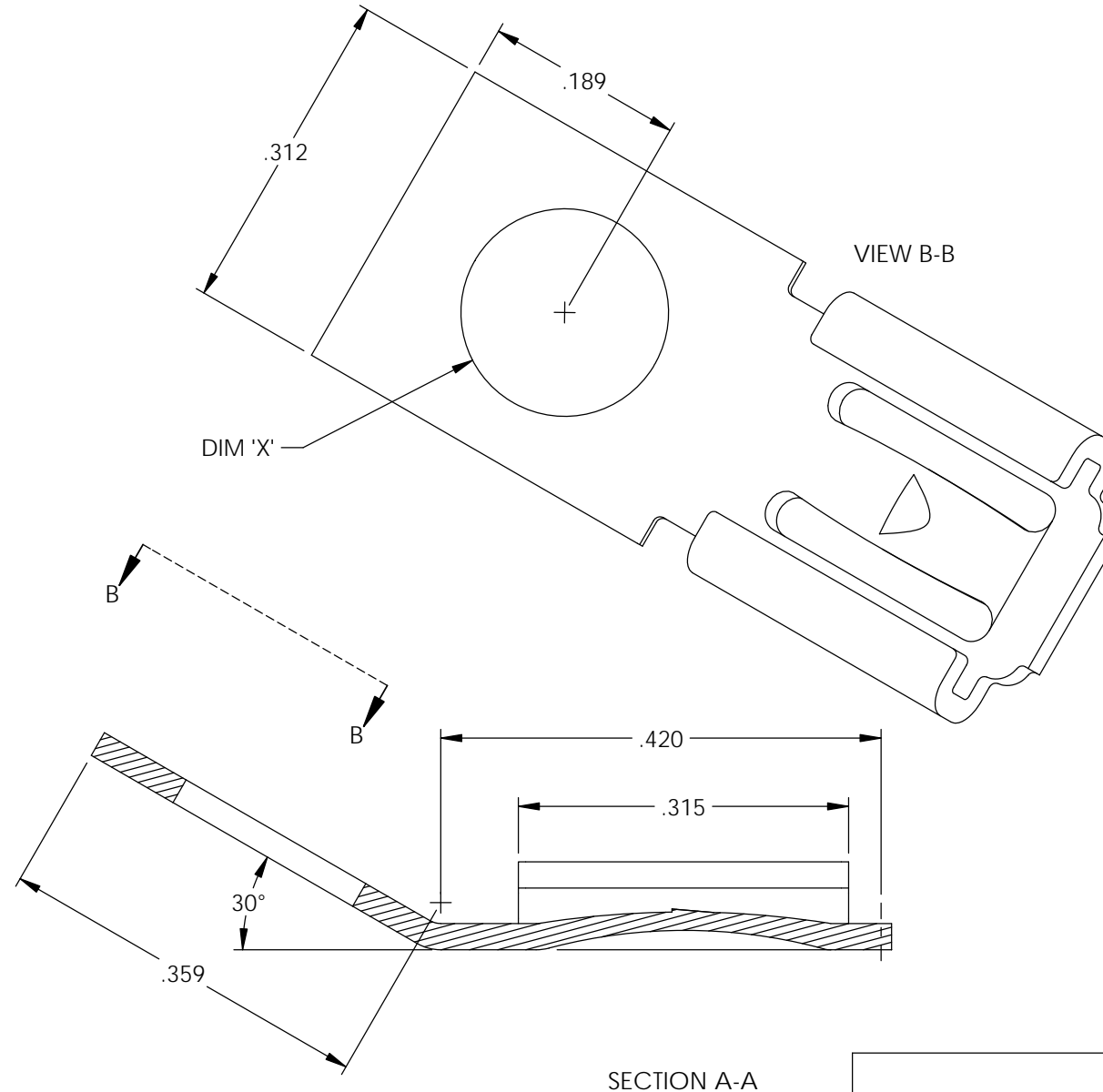
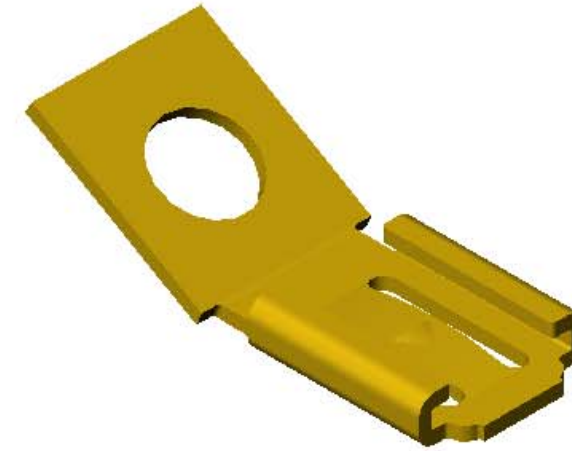
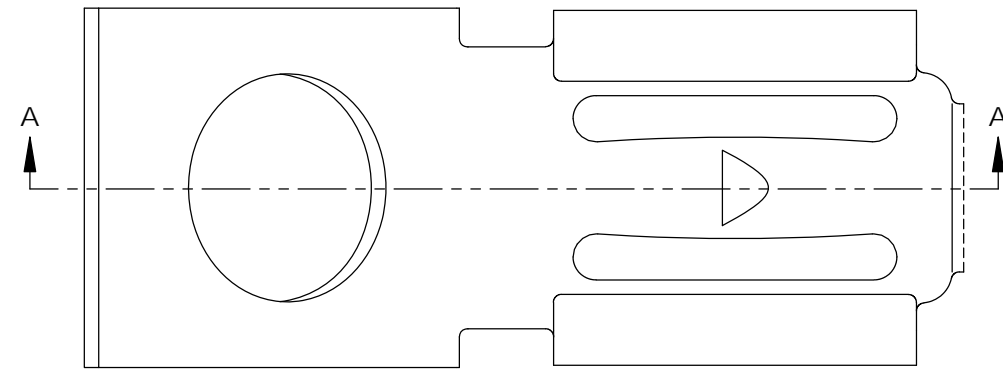



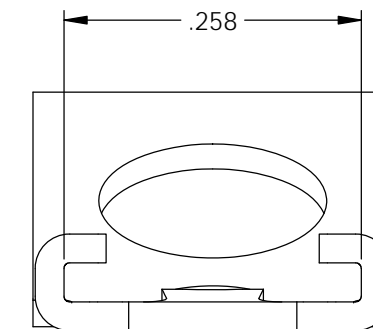
NOTES:

1. MATERIAL: .025 THICK BRASS
#2 TEMPER (1/2 HARD)
PER ETCO METAL CODE XXXXX.
2. MATERIAL: .025 THICK PRE-ELECTRO-TINNED BRASS
#2 TEMPER (1/2 HARD)
PER ETCO METAL CODE XXXXX.
3. MATERIAL: .025 THICK PRE-NICKEL PLATED BRASS
#2 TEMPER (1/2 HARD)
PER ETCO METAL CODE XXXXX.
4. INSERTION/WITHDRAWAL FORCES ARE INDICATED
ON THE QUALITY INSPECTION PLAN.
5. PARTS ARE PRODUCED IN LOOSE PIECE FORM.

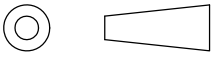

Rev.	Description of Change/ SCN#	Date
A	Approved For Quote SCJ	4/20/20



Part Number	Ø DIM 'X'	Mat'l	
3000H 6A-4A	.198	Note 1	X
3000H 6A-4A2	.198	Note 3	
3000H 6A-4B	.171	Note 1	X
3000H 6A-4B-1	.171	Note 2	X



UNCONTROLLED COPY

 THIRD ANGLE PROJECTION TOLERANCES UNLESS OTHERWISE SPECIFIED INCHES: .XX - ±.030 .XXX - ±.015 ANGLES: ±5°	TOOL NO. 1025	Title: .032 x .250 Stationary Female Disconnect	
		DO NOT SCALE DWG. Drawn By: S.Johnson Design Control By: ETCO Dwg. No.: 3000H 6A-4A, 6A-4B cust	Date: 4/20/20 Scale: 6X Size: B