
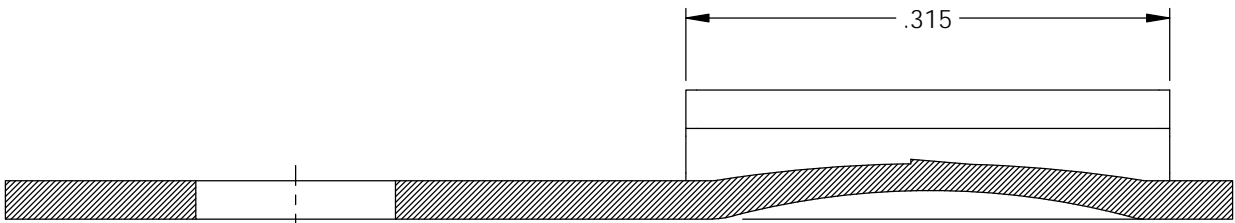
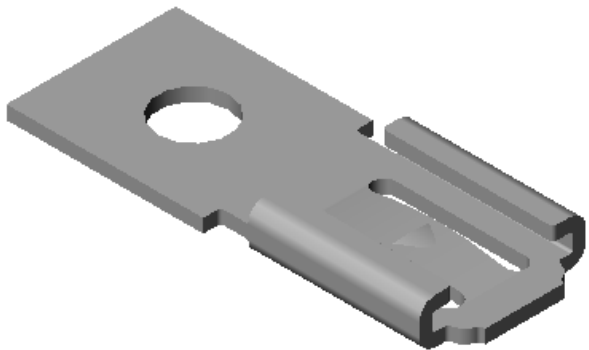
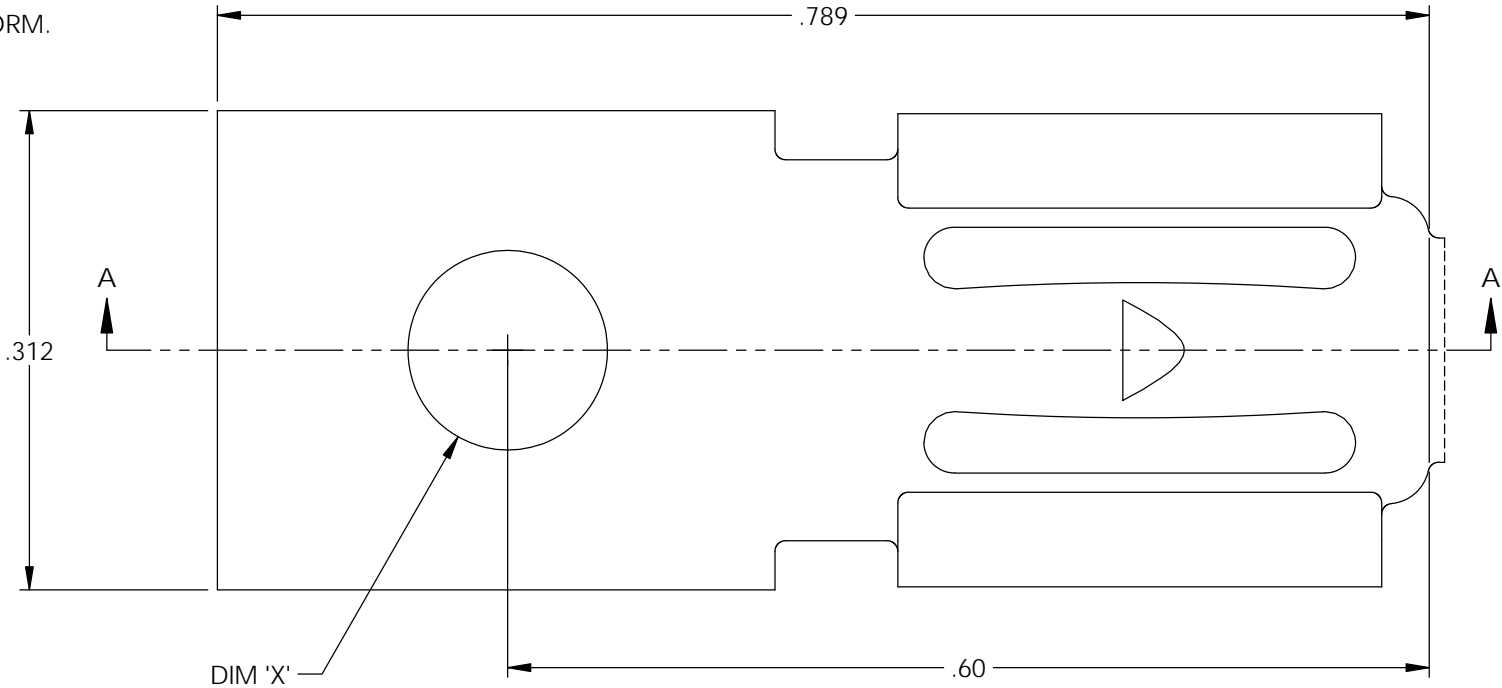


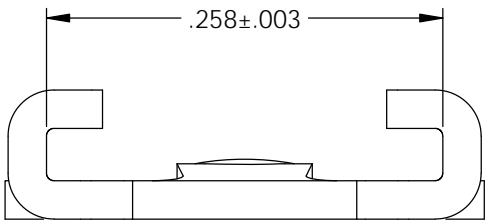
- NOTES:
- 1. MATERIAL: .025 THICK BRASS
#2 TEMPER (1/2 HARD)
PER ETCO METAL CODE XXXXX.
 - 2. MATERIAL: .025 THICK PRE-ELECTRO-TINNED BRASS
#2 TEMPER (1/2 HARD)
PER ETCO METAL CODE XXXXX.
 - 3. MATERIAL: .025 THICK PRE-NICKEL PLATED BRASS
#2 TEMPER (1/2 HARD)
PER ETCO METAL CODE XXXXX.
 - 4. INSERTION/WITHDRAWAL FORCES ARE INDICATED
ON THE QUALITY INSPECTION PLAN.
 - 5. PARTS ARE PRODUCED IN LOOSE PIECE FORM.

Part Number	Ø DIM 'X'	Mat'l	
3000H 6A	.130	Note 1	
3000H 6A-4	.198	Note 1	
3000H 6-30	.130	Note 2	
3000H 6-32	.130	Note 3	X



Rev.	Description of Change/ SCN#		Date
A	Approved For Quote	SCJ	4/20/20



SECTION A-A



UNCONTROLLED COPY

 THIRD ANGLE PROJECTION TOLERANCES UNLESS OTHERWISE SPECIFIED INCHES: .XX - ±.030 .XXX - ±.015 ANGLES: ±5°	TOOL NO. 1025	Title: .032 x .250 Stationary Female Disconnect		
		DO NOT SCALE DWG.	Drawn By: S.Johnson	Date: 4/20/20
		ETCO Incorporated Engineered Products 25 Bellows Street Warwick, RI 02888 Phone: (401) 467-2400 Fax: (401) 467-9230 www.ETCO.com	Design Control By: ETCO	Scale: 8X
		Dwg. No.: 3000H 6A, 6A-4, 6-30, 6-32 cust		